



1794



MARSHALLWHITE

1794 Malvern Road  
Malvern East





## Style and Charm, Perfectly Aligned

The irresistible allure of Art Deco architecture has been made even more appealing by a sensational renovation that introduces wonderful contemporary designer style to this captivating c1930 family domain. An impressive hallway featuring wide oak floors leads to the main bed (WIR) & stylish en-suite, three additional beds (robes) & stunning bathroom. The expansive, light-filled living/ dining room with open fire & gourmet kitchen opens to a private garden. Enviably situated near Hedgeley Dene, shops, station & schools, it includes hydronic heating, alarm, laundry, irrigation, carport & garage. 705sqm (approx.)

1794malvernroad-malverneast.com

4 2 3

Auction Saturday 3rd March at 10.30am

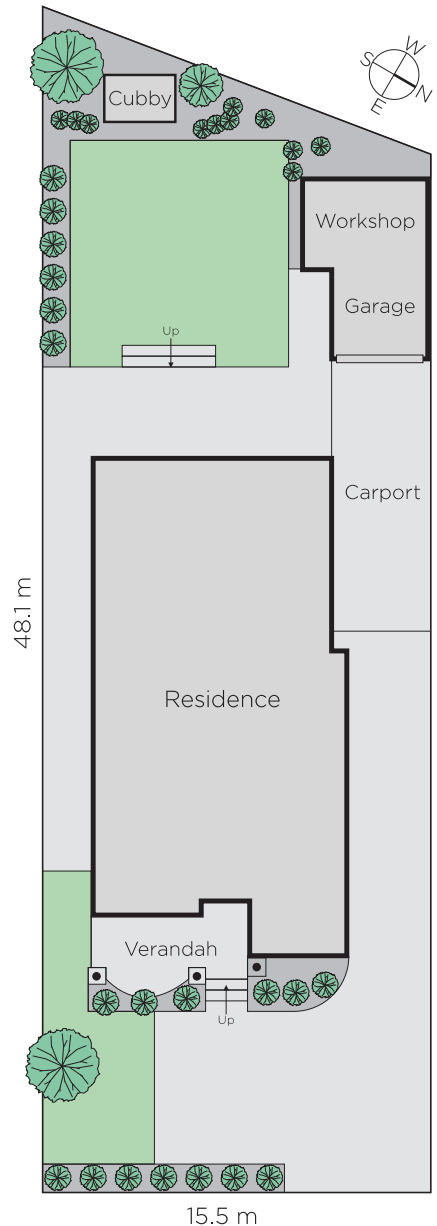
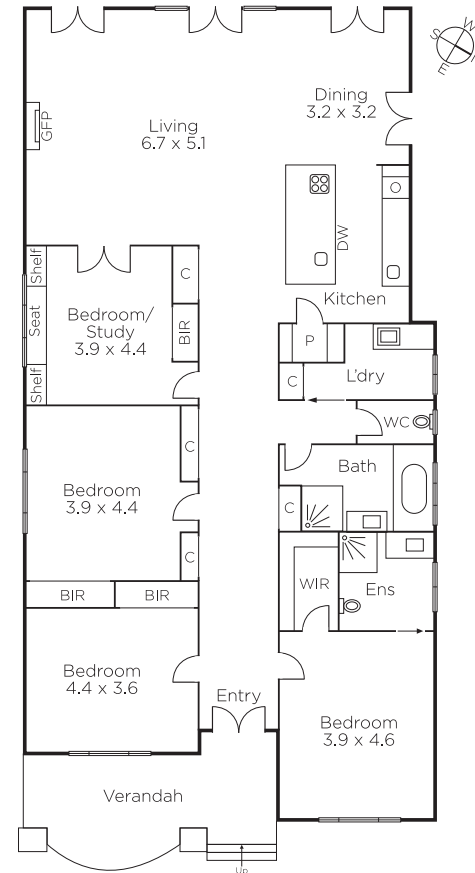
David Volpato  
0414 701 983

James Redfern  
0412 360 667

Bernadette Kiraly  
0401 656 052

  
MARSHALLWHITE

1111 High Street, Armadale



Disclaimer: Information provided is believed to be accurate as at the date of printing, no responsibility is taken for any errors or omissions. It is your responsibility to obtain independent, professional advice. Personal information collected from you is for security purposes and to contact you should the property sell prior to auction. We may use this information to provide you with other real estate services including referrals to authorised financial services providers. Visit our website at [www.marshallwhite.com.au](http://www.marshallwhite.com.au) for our privacy policy.