



MARSHALLWHITE
ONE

17/4 Glyndebourne Avenue
Toorak



Old-style Toorak Classic

Unquestionably a Toorak classic, this huge and beautifully presented, three bedroom, penthouse-style apartment is rich in faithfully maintained post-war character and sits on the top floor with spectacular rooftop views of its urban surrounds.

Utterly charming, the home's kitchen / meals is semi-attached to a large lounge which proudly hosts its original windows and built-in-cabinetry, as well as a balcony and magnificent views. Each of the bedrooms has robes, but the master is particularly generous with ensuite access to the bathroom. Importantly, the home also offers secure intercom entry and undercover parking.

Widely desired for its proximity to both the Village and the Yarra River, Toorak is one of Melbourne's most coveted areas that also offers easy access to Glenferrie Rd, Tooronga Village, fine schools, Kooyong Train Station and the Number 58 tram.

17-4glyndebourneavenue-toorak.com

3 1 1

Auction Saturday 16th June at 9.30am

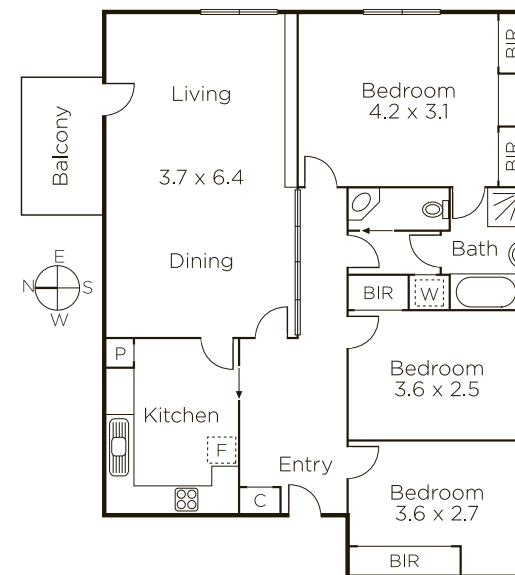
Joseph Ben-Danan 0408 135 948

Matt Giulieri 0407 851 206

James Tostevin 0417 003 333

1111 High Street Armadale

9822 9999 mwone.com.au



MARSHALLWHITE
ONE

Disclaimer: Information provided is believed to be accurate as at the date of printing, no responsibility is taken for any errors or omissions. It is your responsibility to obtain independent, professional advice. Personal information collected from you is for security purposes to contact you should the property sell prior to auction. We may use this information to provide you with other real estate services including referrals to authorized financial services providers. Visit our website at www.mwone.com.au for our privacy policy.