



73

RIVERSDALE COURT


MARSHALLWHITE
ONE

1/73 Riversdale Road
Hawthorn



'Riversdale Court': Urban Art Deco Dream

This spacious, beautifully renovated and highly secure, ground floor, two bedroom Art Deco apartment is a rare delight with easy city access. Original Deco windows, fine detail and towering ceilings with exquisite roses all sit tastefully alongside a new kitchen that blends stone benchtops and glass splash backs with Miele appliances and premium soft close cabinetry. Fully re-wired, the home also features a fully-tiled and vogue bathroom with a stylish frameless shower screen and laundry facilities. Additional drawcards of this exquisite home include ducted central heating, secure intercom entry, a lock-up garage, large bedrooms each with double built-in robes and a lounge room with a stone mantle open fire place. This outstanding location is central to so many highlights of the inner-east. A city-bound tram out the front can also drop you at any of Richmond's lifestyle attractions, whilst Glenferrie Hill shops and cafes are easily walkable.

1-73riversdaleroad-hawthorn.com

2 1 1

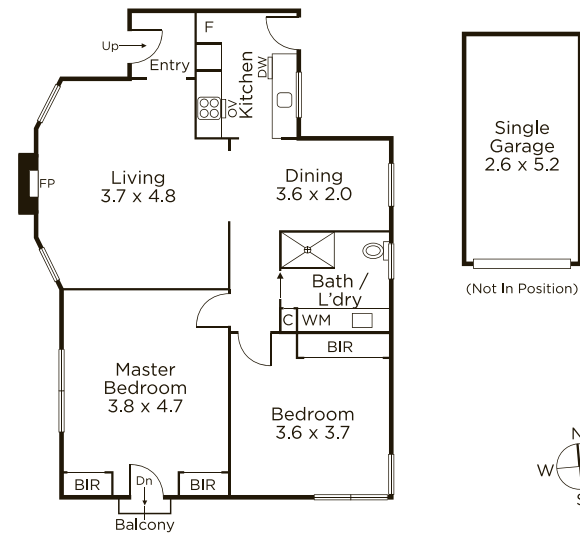
Auction Saturday 16th March at 12.30pm

Ash Sachdev 0402 425 661

Jack Moss 0439 378 954

801 Glenferrie Road Hawthorn

9822 9999 mwone.com.au



MARSHALLWHITE
ONE

Disclaimer: Information provided is believed to be accurate as at the date of printing, no responsibility is taken for any errors or omissions. It is your responsibility to obtain independent, professional advice. Personal information collected from you is for security purposes to contact you should the property sell prior to auction. We may use this information to provide you with other real estate services including referrals to authorized financial services providers. Visit our website at www.mwone.com.au for our privacy policy.