



MARSHALLWHITE

1702-1704 Malvern  
Road  
Glen Iris





## Enticing Dorrington Estate Opportunity

Gracious proportions, period charm and a substantial northwest corner allotment in the prized Dorrington Estate highlight the significant opportunity presented by this c1923 single level solid brick residence. Enjoyed by the one family for 54 years, it provides a perfect foundation for an inspired renovation and extension (STCA). Ornate ceilings and leadlight windows are featured in the wide hallway, generous living room with a fireplace and separate study nook/sun room and the separate dining room. The main bedroom boasting a bay window and fireplace and two additional double bedrooms are all spacious and accompanied by a bathroom and 2nd toilet. Natural light streams through the large well-appointed kitchen with meals area and a sun-room opening to the private northwest garden. Just moments from a range of schools, Glen Iris station, Gardiner's Creek and the freeway, it also includes a large wine cellar, shed and garage entered from Grandview Rd.

Land size: 707sqm approx.

[1702malvernroad-gleniris.com](http://1702malvernroad-gleniris.com)

3  1  2 

Auction Saturday 9th September at 1.30pm

Daniel Wheeler 0411 676 058

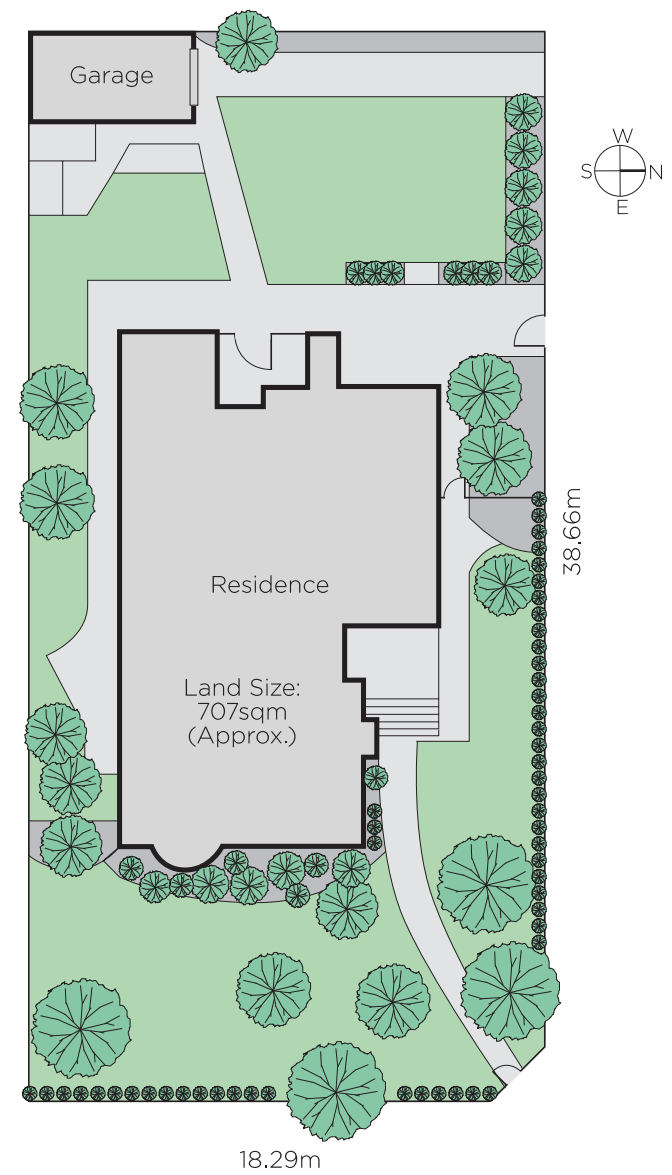
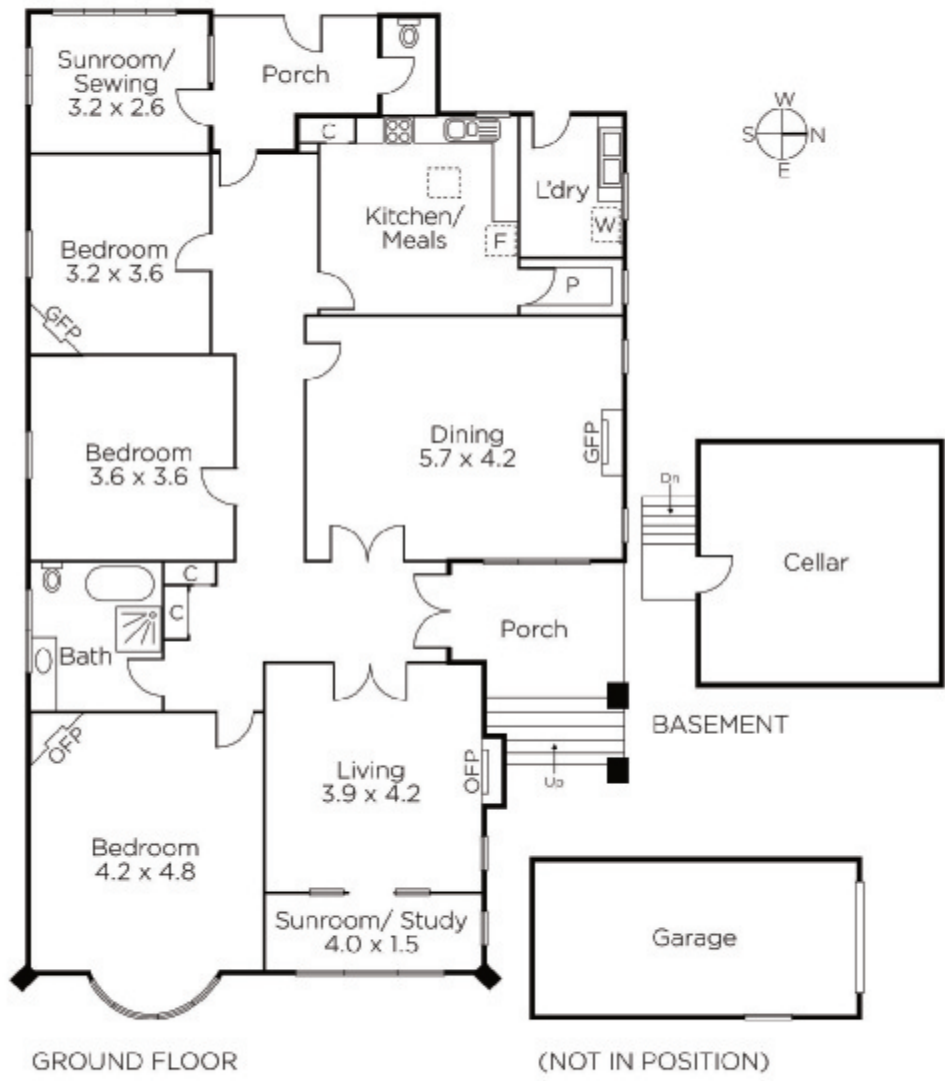
Clare Moloney 0401 546 441

Justin Long 0418 537 973

1111 High Street Armadale

[marshallwhite.com.au](http://marshallwhite.com.au)

  
MARSHALLWHITE



Disclaimer: Information provided is believed to be accurate as at the date of printing, no responsibility is taken for any errors or omissions. It is your responsibility to obtain independent, professional advice. Personal information collected from you is for security purposes and to contact you should the property sell prior to auction. We may use this information to provide you with other real estate services including referrals to authorised financial services' providers. Visit our website at [www.marshallwhite.com.au](http://www.marshallwhite.com.au) for our privacy policy.