



MARSHALLWHITE

170 Dow Street
Port Melbourne



Irresistible Charm and Lifestyle Appeal

The instant allure of this captivating freestanding Victorian residence's combination of period charm and contemporary style is enhanced by its enviable lifestyle location near the beach, Bay St's shops and restaurants, Edwards Park and the light rail.

Baltic pine floors highlight the classic charm of the arched hallway which leads to two double bedrooms with robes, stylish bathroom and a third upstairs bedroom with robe. Vaulted ceilings accentuate the sense of space in the generous living/dining room with gourmet kitchen opening to a picturesque private garden.

3 1

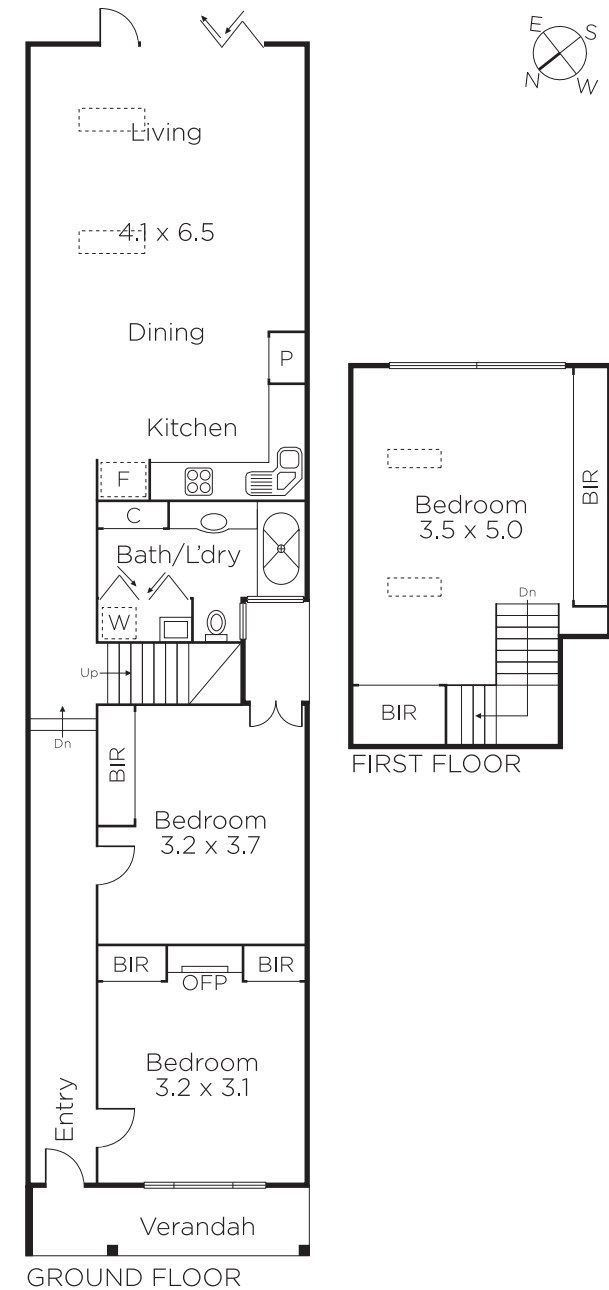
Auction Saturday 20th October at 11.30am

Scott O'Halloran
0413 464 473

Nicholas Hoo
0435 728 272


MARSHALLWHITE

101 Dundas Place, Albert Park



Disclaimer: Information provided is believed to be accurate as at the date of printing, no responsibility is taken for any errors or omissions. It is your responsibility to obtain independent, professional advice. Personal information collected from you is for security purposes and to contact you should the property sell prior to auction. We may use this information to provide you with other real estate services including referrals to authorised financial services providers. Visit our website at www.marshallwhite.com.au for our privacy policy.