



17


MARSHALLWHITE

17 View Street
Canterbury





"Ireland" - 1906

Beautifully situated within a deep 857sqm approx. north-facing garden, this charming Edwardian residence's gracious proportions and exquisite period elegance provide a wonderful family environment to enjoy now while considering scope to further update (STCA).

Behind a sprawling verandah, Baltic pine floors, high ceilings, leadlight windows and sweeping arches define the entrance foyer, refined sitting room with open fireplace and formal dining room with an open fire and pressed metal ceiling. The glorious main bedroom with open fireplace, en-suite, built in robe and pressed metal ceiling is accompanied by two additional double bedrooms and a bathroom. The enchanting breakfast room with open fireplace and well appointed kitchen open to the deep private leafy garden with orchard area.

In an elite location near Maling Road Village, Canterbury station and a range of schools, it also includes a double carport.

17viewstreet-canterbury.com

3  2  2 

Auction Saturday 13th May at 1.30pm

Duane Wolowiec 0418 567 581

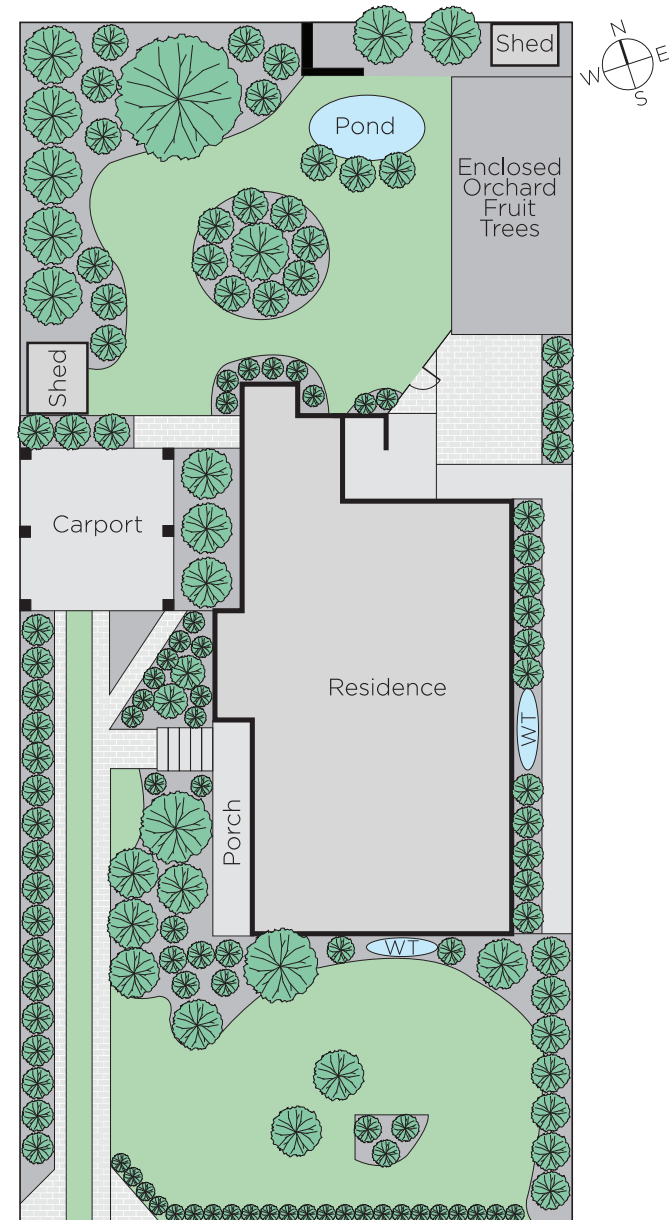
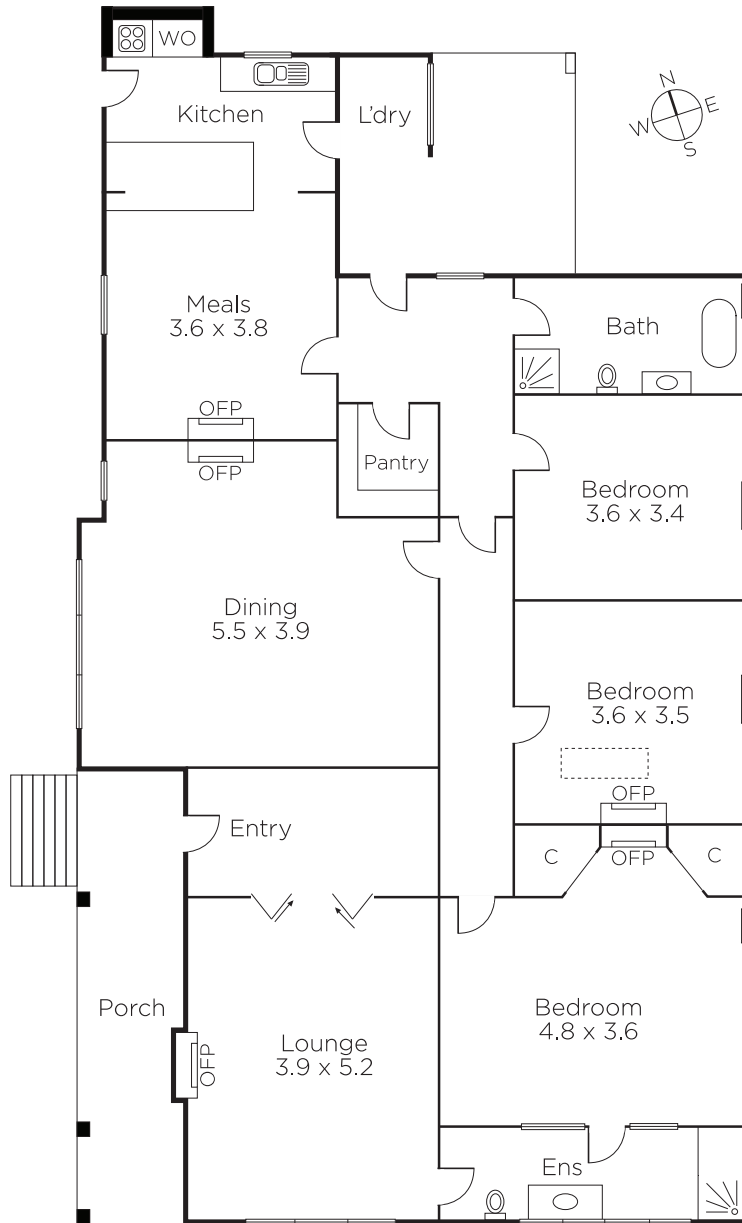
Stuart Evans 0402 067 710

Sophie Su 0425 270 125

801 Glenferrie Road Hawthorn

marshallwhite.com.au


MARSHALLWHITE



Disclaimer: Information provided is believed to be accurate as at the date of printing, no responsibility is taken for any errors or omissions. It is your responsibility to obtain independent, professional advice. Personal information collected from you is for security purposes and to contact you should the property sell prior to auction. We may use this information to provide you with other real estate services including referrals to authorised financial services' providers. Visit our website at www.marshallwhite.com.au for our privacy policy.