



  
MARSHALLWHITE

17 Kent Road  
Surrey Hills





## Distinguished Charm, Sophisticated Family Living

In a picturesque tree-lined street in the revered English Countries precinct, this privately positioned 4 bedroom Californian bungalow built c1922 boasts distinguished charm and discerning family living amid a lush garden setting with first class amenities, parks and schools all within easy reach. Capturing sophisticated, spacious and sun-drenched interiors offered by the homes original foundations, notably infused with traditional classic allure and the tasteful extension that embraces relaxed family living and entertaining, accompanied by the tranquil garden surrounds. Interior highlights include formal sitting OFP, master featuring BIRs, OFP & ensuite, attic retreat/study, pristine kitchen, living/dining domain opening to terrace, established gardens & outdoor entertaining. Complemented by family bathroom, laundry, OSP, carport, workshop & studio. Moments to Maling & Union Rd shopping precincts, prestigious schools, parks & transport.

[17kentroad-surreyhill.com](http://17kentroad-surreyhill.com)

4  2  2 

Auction Saturday 8th April at 9.30am

Zali Reynolds 0422 576 049

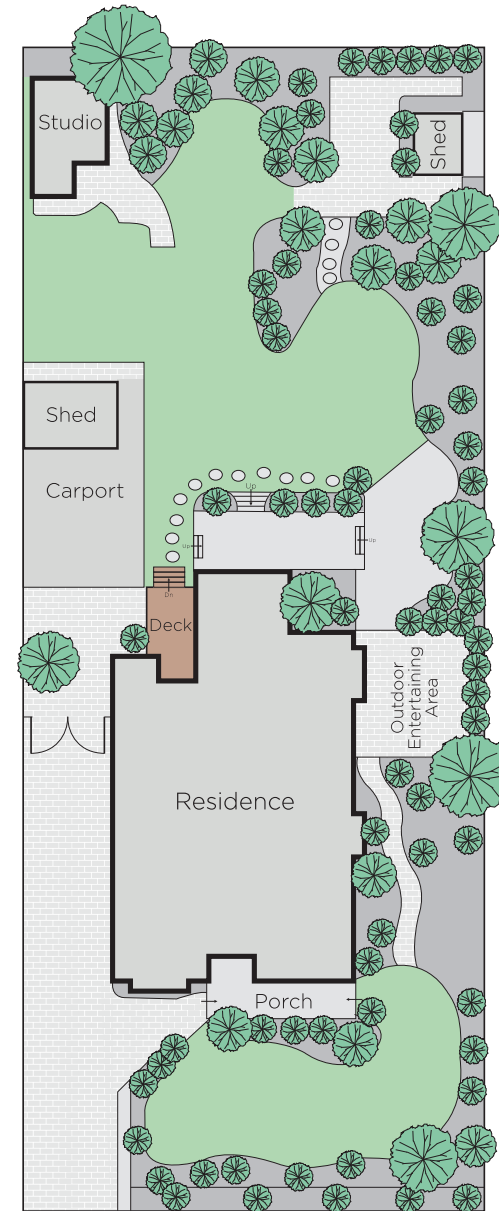
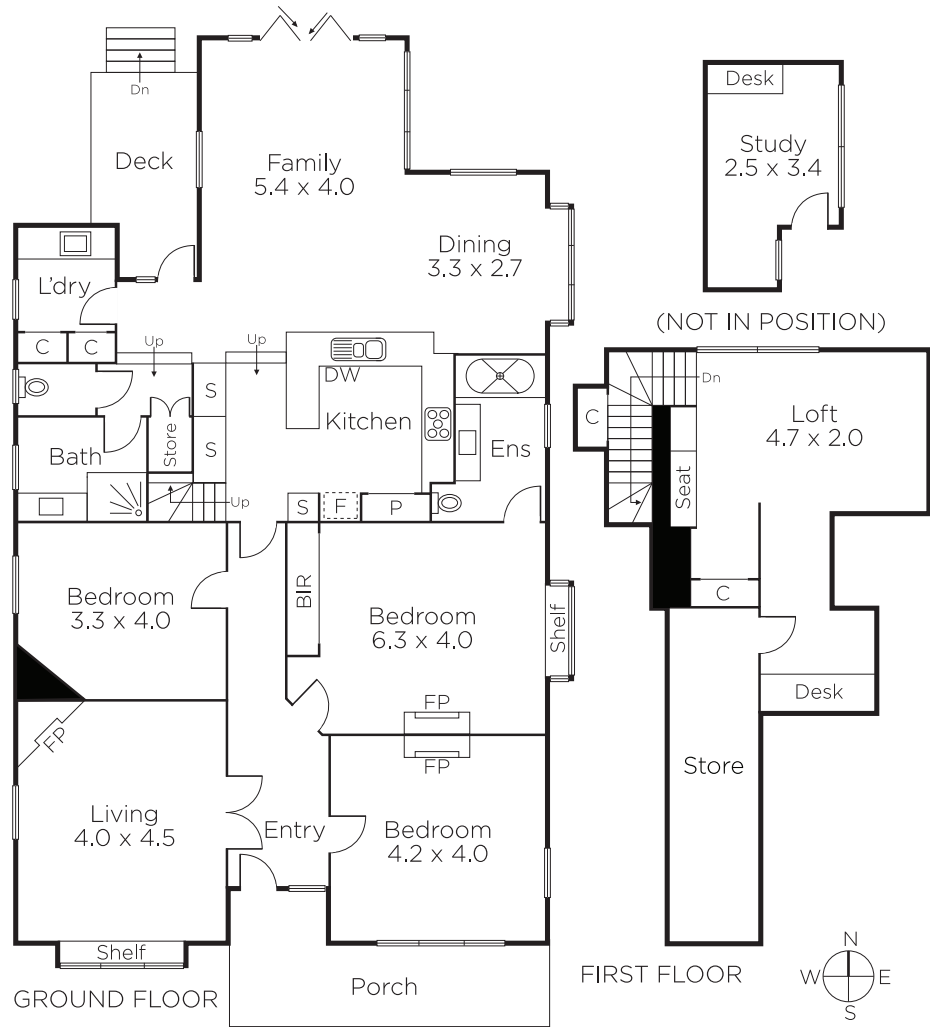
James Tostevin 0417 003 333

Michael Wood 0425 280 191

801 Glenferrie Road Hawthorn

[marshallwhite.com.au](http://marshallwhite.com.au)

  
MARSHALLWHITE



Disclaimer: Information provided is believed to be accurate as at the date of printing, no responsibility is taken for any errors or omissions. It is your responsibility to obtain independent, professional advice. Personal information collected from you is for security purposes and to contact you should the property sell prior to auction. We may use this information to provide you with other real estate services including referrals to authorised financial services' providers. Visit our website at [www.marshallwhite.com.au](http://www.marshallwhite.com.au) for our privacy policy.