



MARSHALLWHITE

17 Hazeldine Road
Glen Iris

17





Idyllic Family Surrounds

Immediately captivating, this charming period residence's stylishly presented, generously proportioned and light-filled dimensions put an emphasis on family flexibility and relaxed living in a desirable location near Ferndale Park, Ashburton Village, Glen Iris and Ashburton stations, schools and freeway access. A wide verandah introduces a central hall and elegant sitting and formal dining rooms streaming with natural light. The well appointed modern kitchen featuring stone benches and Bosch appliances and an inviting living and dining room with gas fireplace open out to a deep picturesque entirely private northeast garden with large deck and BBQ terrace. Superbly zoned accommodation comprises a beautiful main bedroom with built in robe and stylish en-suite with a freestanding bath and in a separate wing, two additional double bedrooms with built in robes and a chic bathroom. Upstairs there is a spacious 4th bedroom with built in robe and a large retreat or home office with balcony offering leafy views. Immaculately presented throughout, it also includes ducted vacuum, laundry, work-shop, ample storage, carport and off street parking. Land size: 674sqm approx.

17hazeldineroad-gleniris.com

4 2 3

Auction Saturday 5th May at 2.30pm

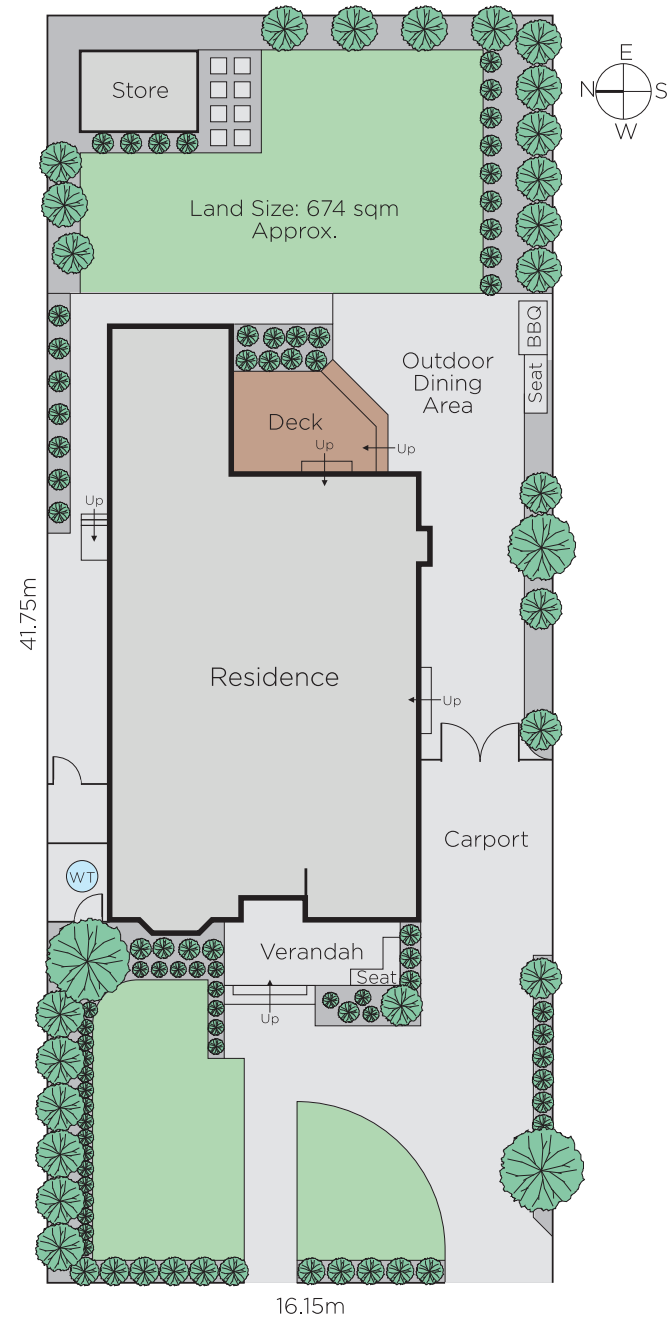
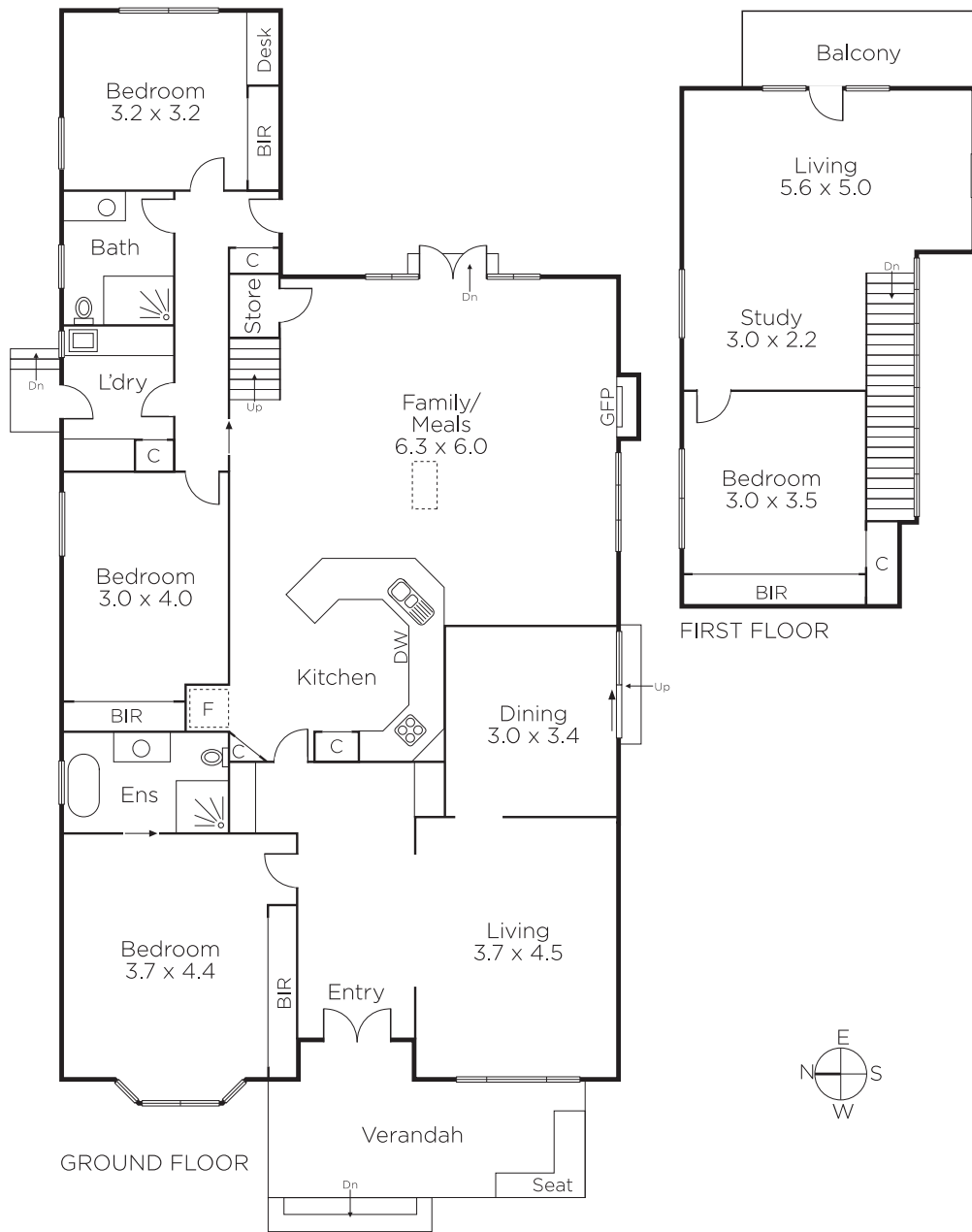
Justin Krongold
0403 163 355

Jason Brinkworth
0416 006 282

Daniel Wheeler
0411 676 058


MARSHALLWHITE

1111 High Street, Armadale



Disclaimer: Information provided is believed to be accurate as at the date of printing, no responsibility is taken for any errors or omissions. It is your responsibility to obtain independent, professional advice. Personal information collected from you is for security purposes and to contact you should the property sell prior to auction. We may use this information to provide you with other real estate services including referrals to authorised financial services' providers. Visit our website at www.marshallwhite.com.au for our privacy policy.