




MARSHALLWHITE
ONE

16/82 Patterson Street
Middle Park



Hidden Bayside Secret with Bay and City Views

This bright, top floor apartment combines the very best of inner-urban living and city proximity with the bayside, village-like atmosphere of Middle Park and features views that extend both to the city skyline in the north and to the bay in the south. Floor to ceiling windows welcome an abundance of natural light into the open-plan living/kitchen/meals all day long, whilst its bathroom is fully-tiled with subway tiles.

Featuring a full-size kitchen with considerable storage, marble waterfall benches and European appliances - the clever design allows plenty of space to entertain. Highly secure with intercom entry, the home also features polished timber floors and huge robes in the bedrooms. Renowned for its ambient cafes, restaurants and bars on Armstrong Street, this blue-ribbon location also offers you the ability to walk along the beach, open your windows to a sea breeze on a hot summer's night or be in the city within minutes.

16-82pattersonstreet-middlepark.com 2 1

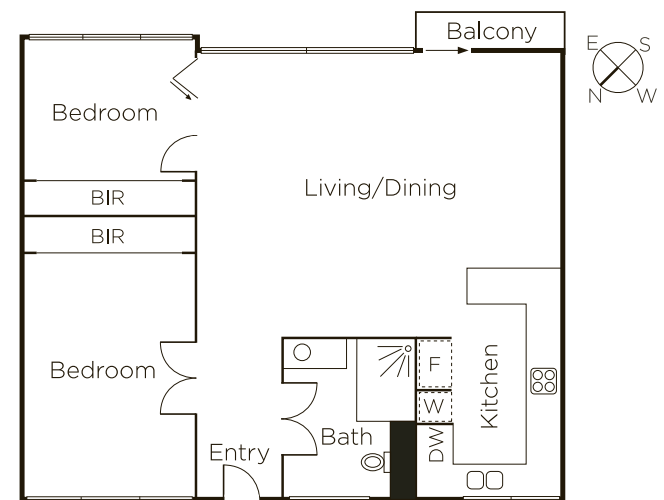
Auction Saturday 16th September at 12noon

Matthew Grima 0403 438 601

101 Dundas Place Albert Park

Bradley Steinbach 0403 539 038

9822 9999 mwone.com.au



MARSHALLWHITE
ONE

Disclaimer: Information provided is believed to be accurate as at the date of printing, no responsibility is taken for any errors or omissions. It is your responsibility to obtain independent, professional advice. Personal information collected from you is for security purposes to contact you should the property sell prior to auction. We may use this information to provide you with other real estate services including referrals to authorized financial services' providers. Visit our website at www.mwone.com.au for our privacy policy.