



  
MARSHALLWHITE  
ONE

16/6 Graham Street  
Port Melbourne





## 'The Park Apartments'; Superior Bayside Living

This modern, one bedroom, apartment is a superior, Becton-built, urban residence that offers the very finest of communal lifestyle amenities and is suited to lovers of inner-urban and bayside living, clever down-sizers and astute investors keen on a blue ribbon addition to their portfolio. Set amidst beautifully landscaped and meticulously maintained gardens, this secure home features basement parking with storage cage, intercom entry, as well as a communal swimming pool and gymnasium. Offering a wonderful al fresco flow, the open-plan kitchen/dining/lounge opens to a large terrace with a lovely communal garden backdrop. There are also walk-in-robos in the bedroom, and a European laundry in the bathroom. From this privileged position so close to Bay St's shops, cafes, restaurants and bars, you will love the nightlife as well as being just minutes from the beach and Gasworks Park as well as city-bound public transport.

16-6grahamstreet-portmelbourne.com 1 1 1

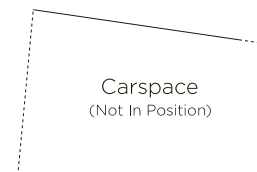
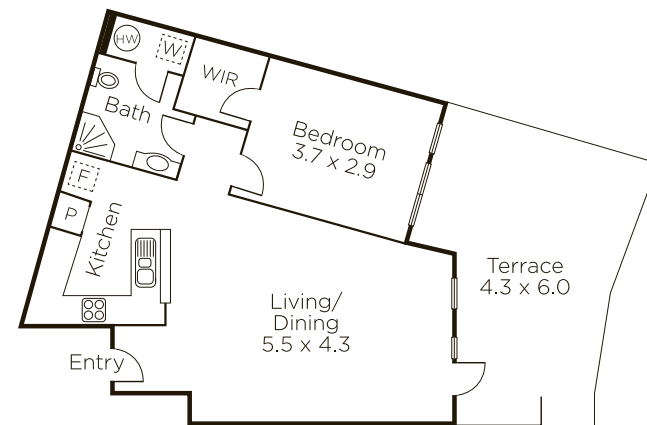
Auction Saturday 20th May at 10.30am

Matthew Grima 0403 438 601

Sam Hobbs 0404 164 444

101 Dundas Place Albert Park

9822 9999 mwone.com.au



  
MARSHALLWHITE  
ONE

Disclaimer: Information provided is believed to be accurate as at the date of printing, no responsibility is taken for any errors or omissions. It is your responsibility to obtain independent, professional advice. Personal information collected from you is for security purposes to contact you should the property sell prior to auction. We may use this information to provide you with other real estate services including referrals to authorized financial services providers. Visit our website at [www.mwone.com.au](http://www.mwone.com.au) for our privacy policy.