




MARSHALLWHITE
ONE

1650 Dandenong Road
Oakleigh East



Designer Townhouse, Positioned for Lifestyle

A superb, low maintenance option for discerning first home buyers and clever investors, this light-filled, as new, two bedroom townhouse blends a beautiful designer presentation with a north-facing courtyard in this convenient location, just a few minutes from Chadstone Shopping Centre. An attractive and angular design highlights Caesar Stone benchtops, SMEG appliances and glass splash backs in an open-plan kitchen/meals/living that connects to a paved courtyard. The master bedroom enjoys its own balcony and en-suite, whilst there are robes in the other bedroom as well as a main bathroom which is also themed with Caesar Stone finishes. Offering everything you could need, the home also features parking on title, a 3rd wc/powder room, air conditioning, great storage and mirrored robes. Not only is the home within minutes of Chadstone, but it is also highly convenient to city-bound transport, the M1 freeway and Monash University.

1650dandenongrd-oakleigheast.com

Auction Saturday 29th April at 10.30am

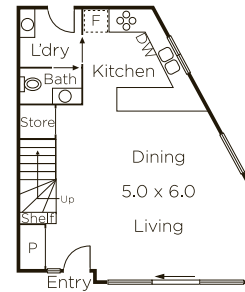
Joseph Ben-Danan 0408 135 948

Matt Giulieri 0407 851 206

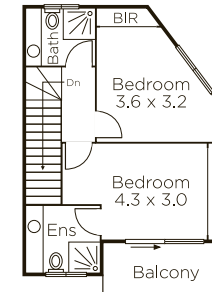
Dean Gilbert 0418 994 939

111 High Street Armadale

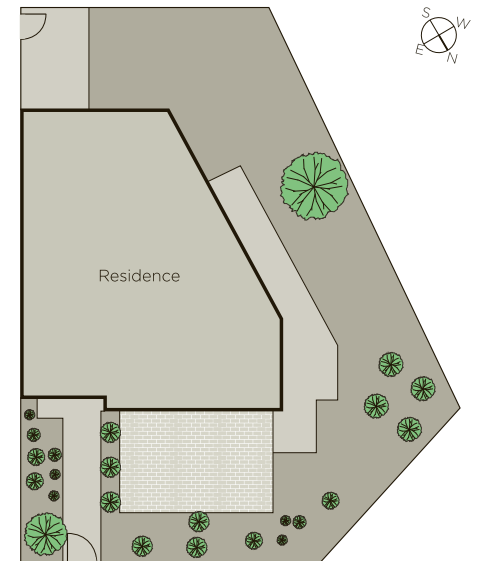
9822 999 marshallwhite.com.au



GROUND FLOOR



FIRST FLOOR



MARSHALLWHITE
ONE

Disclaimer: Information provided is believed to be accurate as at the date of printing, no responsibility is taken for any errors or omissions. It is your responsibility to obtain independent, professional advice. Personal information collected from you is for security purposes to contact you should the property sell prior to auction. We may use this information to provide you with other real estate services including referrals to authorized financial services providers. Visit our website at www.mwone.com.au for our privacy policy.