



MARSHALLWHITE

165 Belford Road
Kew East



Fine Family Living in Cul-de-sac Location

This solid brick family home boasts an elevated position opposite Kew Golf Club at the quiet cul-de-sac end of Belford Road. Recently refurbished, the light-filled interior features a wide entrance with polished timber floors, formal sitting room (OFP) flowing through a dining room, well-equipped contemporary kitchen and expansive family room plus a brick paved outdoor dining area - delivering loads of space for entertaining small or large numbers, either indoors or a combination of both. Complemented by 4-bedrooms, main/WIR/ensuite plus a family bathroom, laundry with WC and a study. Land size: 710sqm approx.

165belfordroad-keweast.com

5 2 2

Auction Saturday 24th February at 11.30am

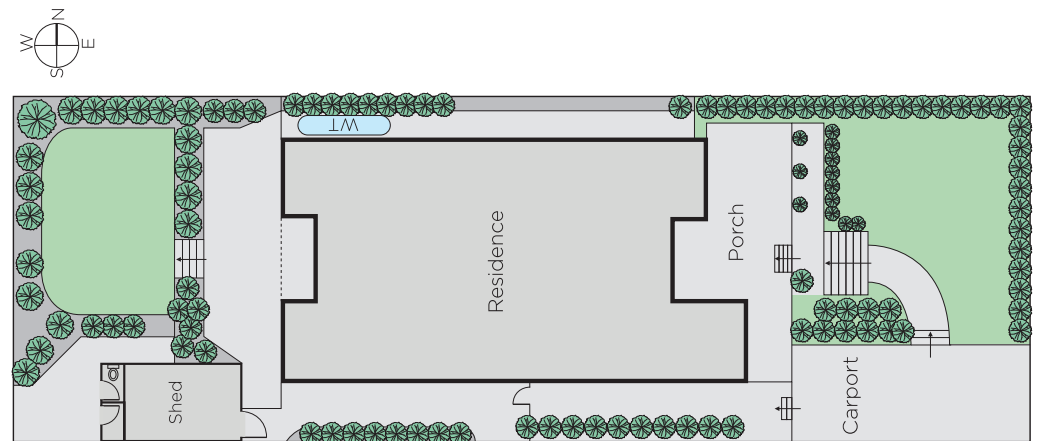
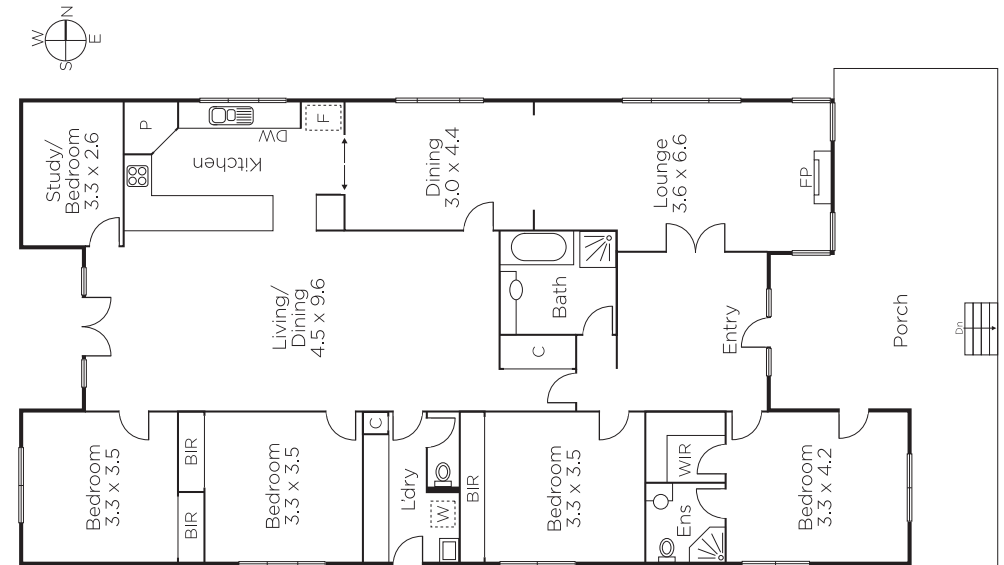
James Tostevin
0417 003 333

Mark Sproule
0408 090 205

Nikki Van Gulick
0419 325 911


MARSHALLWHITE

801 Glenferrie Road, Hawthorn



Disclaimer: Information provided is believed to be accurate as at the date of printing, no responsibility is taken for any errors or omissions. It is your responsibility to obtain independent, professional advice. Personal information collected from you is for security purposes and to contact you should the property sell prior to auction. We may use this information to provide you with other real estate services including referrals to authorised financial services? providers. Visit our website at www.marshallwhite.com.au for our privacy policy.