



MARSHALLWHITE  
ONE

1/64 Riversdale Road  
Hawthorn



## Designer Apartment with an al fresco Spirit

As it flows outdoors to an incredible, paved, rear courtyard, this large, one bedroom, designer apartment feels like a tranquil sanctuary. Enriched by dark polished timber floors, the home flows towards its vast and striking open-plan kitchen/meals/living where stone benches and European appliances combine to create an impressive context for its captivating indoor-outdoor connection. The bathroom is a vogue space with stone benches and the home is centrally heated/cooled plus there is a separate laundry. Indeed, such extraordinary outdoor living is a rarity for an urban apartment, but so too is the sense of privacy and natural light. Additional features include a communal rooftop terrace with spectacular city views, secure video entry, two basement parking spaces and a storage cage all with elevator access. With a city-bound tram, Glenferrie Rd and Hawthorn Railway Station just metres away, CBD commuting has never been easier.

1-64riversdaleroad-hawthorn.com

1 1 2

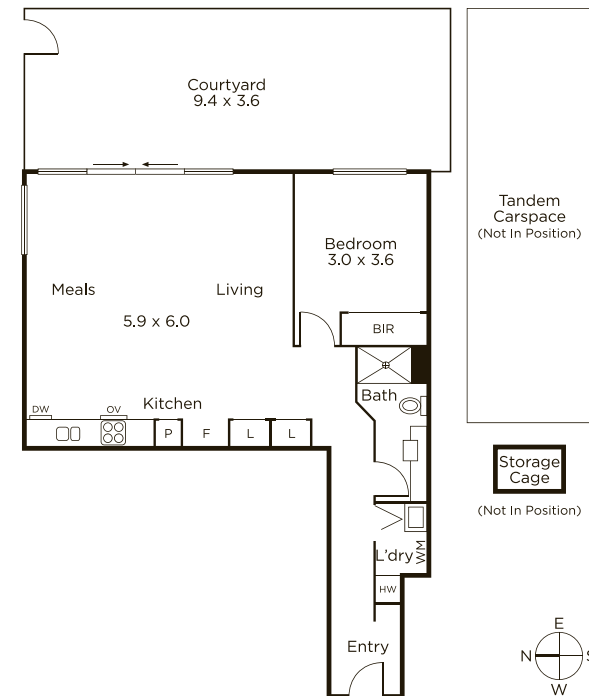
Auction Saturday 16th March at 11am

James Hill 0402 421 154

Ash Sachdev 0402 425 661

801 Glenferrie Road Hawthorn

9822 9999 mwone.com.au



MARSHALLWHITE  
ONE

Disclaimer: Information provided is believed to be accurate as at the date of printing, no responsibility is taken for any errors or omissions. It is your responsibility to obtain independent, professional advice. Personal information collected from you is for security purposes to contact you should the property sell prior to auction. We may use this information to provide you with other real estate services including referrals to authorized financial services providers. Visit our website at [www.mwone.com.au](http://www.mwone.com.au) for our privacy policy.