



25


MARSHALLWHITE
ONE

16/25 Kooyong Road
Armadale



Timeless Renovation, Sophisticated Lifestyle

With the utmost of care and attention to detail, this modern, generously proportioned two bedroom apartment has been undertaken to present a low maintenance home of enduring style on the second floor / top floor of this well maintained boutique block. Caesar Stone kitchen benches and glass splash backs form a timeless combination with a crisp white colour palate and streams of natural light as a bright open-plan living flows to a sunny east-facing balcony that is perfect for a weekend breakfast with the newspapers. Highly secure with two video and intercom entries as well as basement parking, the home also features a master bedroom with private ensuite, robes in each bedroom and a European laundry. Vibrantly positioned within walking distance of Wattle tree Rd, High St and Armadale Railway station, the home is spoilt for city-bound transport options, great cafes, boutique strip shopping and first class local restaurants.

16-25kooyongroad-armadale.com

2 2 1

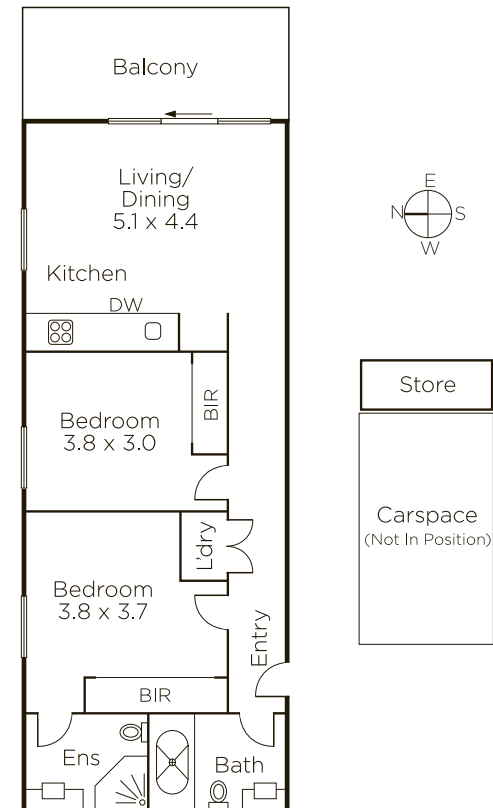
Auction Saturday 6th October at 9.30am

Joseph Ben-Danan 0408 135 948

Jack Moss 0439 378 954

1111 High Street Armadale

9822 9999 mwone.com.au




MARSHALLWHITE
ONE

Disclaimer: Information provided is believed to be accurate as at the date of printing, no responsibility is taken for any errors or omissions. It is your responsibility to obtain independent, professional advice. Personal information collected from you is for security purposes to contact you should the property sell prior to auction. We may use this information to provide you with other real estate services including referrals to authorized financial services' providers. Visit our website at www.mwone.com.au for our privacy policy.