




MARSHALLWHITE

16 Sutherland Street
Malvern East



Family Focus in the Perfect Position

Nestled in a pretty streetscape of heritage homes, this 1920's residence boasts generous family spaces enjoying northern orientation & a pool ideal for family enjoyment. A traditional verandah & attractive façade with leadlight entry introduces its zoned living areas, & a spacious kitchen with Bosch dishwasher. There are 3 beds, each with BIRs, the main with ensuite, & a 4th bed/study adding family flexibility. Compelling now with scope to enhance, this home is situated in a family focused area close to schools, shops & public transport. Complete with a dbl carport & broad 17.7m frontage. Land Size: 655sqm approx.

16sutherlandstreet-malverneast.com

4 2 2

Auction Saturday 11th November at 9.30am

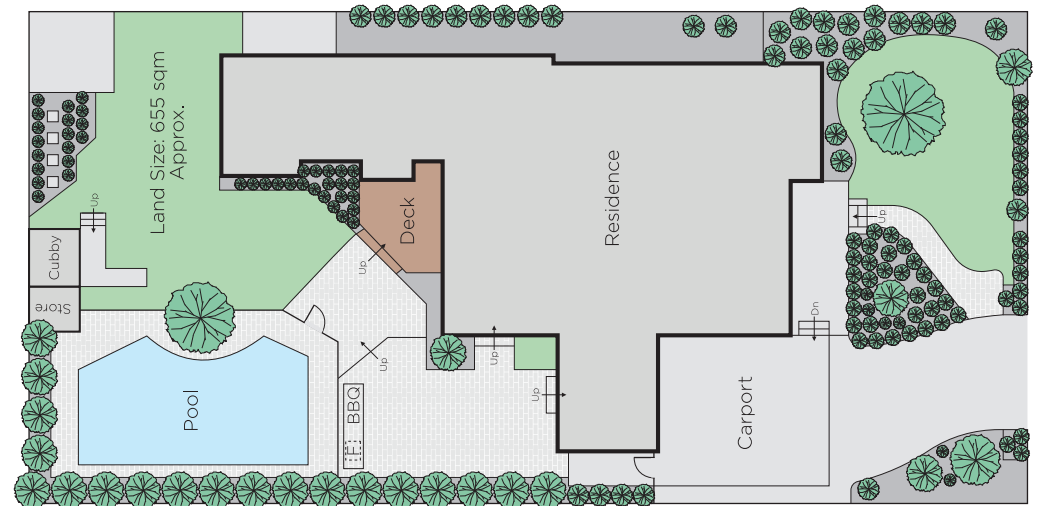
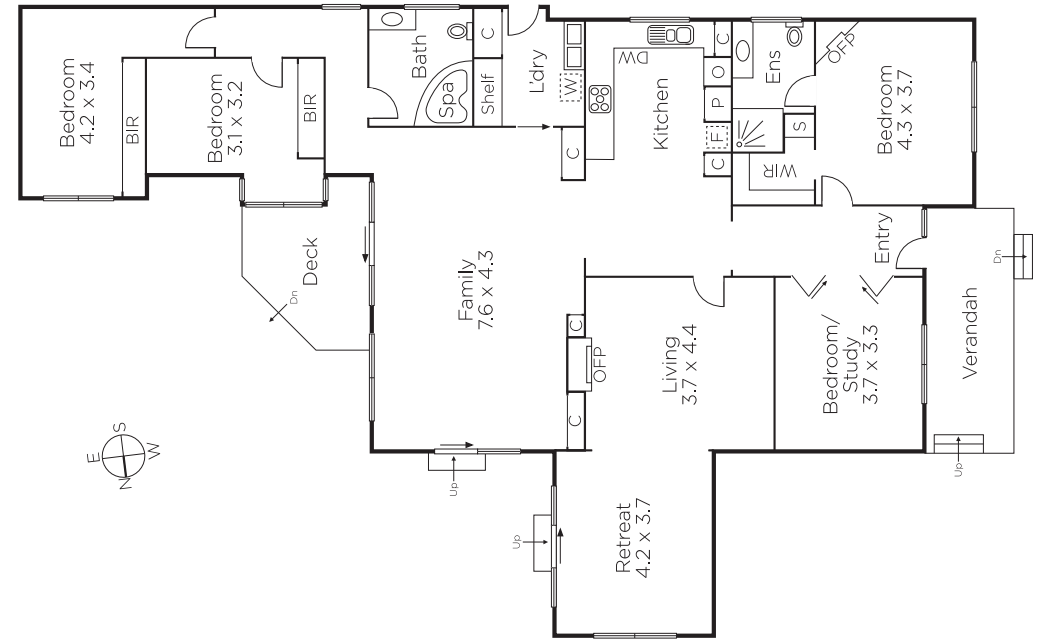
Anna Perry 0434 212 271

Madeline Kennedy 0411 873 913

James Redfern 0412 360 667

1111 High Street Armadale
marshallwhite.com.au


MARSHALLWHITE



Disclaimer: Information provided is believed to be accurate as at the date of printing, no responsibility is taken for any errors or omissions. It is your responsibility to obtain independent, professional advice. Personal information collected from you is for security purposes and to contact you should the property sell prior to auction. We may use this information to provide you with other real estate services including referrals to authorised financial services' providers. Visit our website at www.marshallwhite.com.au for our privacy policy.