




MARSHALLWHITE

16 Munro Street
Hawthorn East



"Linden" - c 1910

While the captivating charm of this classic Edwardian residence offers irresistible appeal for immediate enjoyment, the exceptionally deep 495sqm approx. northwest private garden setting also suggests the possibility of a renovation and extension or as a new home site (STCA). Baltic pine floors flow through the hall to a glorious sitting room (open fire), three double bedrooms (robes) and a bathroom. The dining room and well appointed Ilve kitchen open to the private garden. Enviably situated near Camberwell Junction, Rivoli Cinemas, Fritsch Holzer Park, schools and trams, it includes a shed and off street parking.

16munrostreet-hawthorneast.com

3 1 2

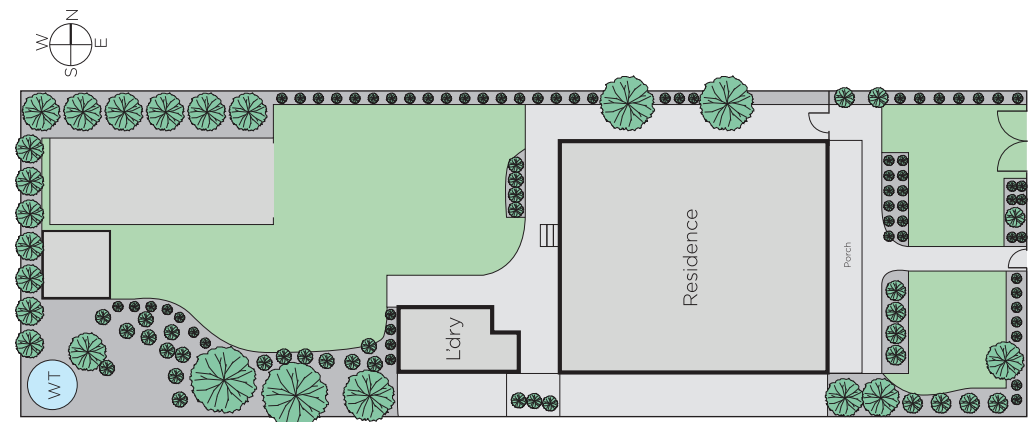
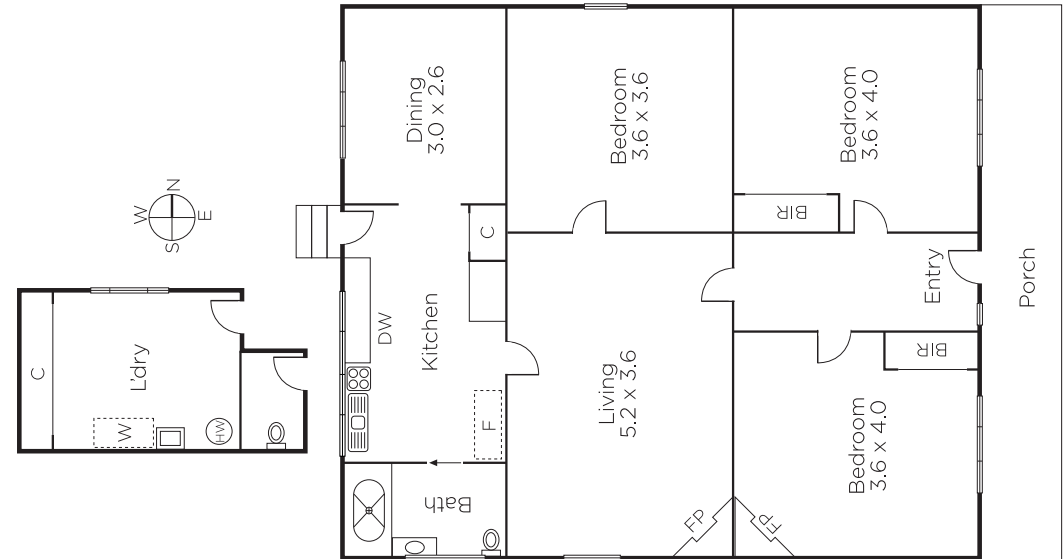
Auction Saturday 19th August at 2.30pm

Michael Wood 0425 280 191

Andrew Hayne 0418 395 349

1111 High Street Armadale
marshallwhite.com.au

MARSHALLWHITE



Disclaimer: Information provided is believed to be accurate as at the date of printing, no responsibility is taken for any errors or omissions. It is your responsibility to obtain independent, professional advice. Personal information collected from you is for security purposes and to contact you should the property sell prior to auction. We may use this information to provide you with other real estate services including referrals to authorised financial services' providers. Visit our website at www.marshallwhite.com.au for our privacy policy.