




MARSHALLWHITE

16 Mountain Street
South Melbourne



'Wellington'

Beyond a picturesque facade, this impressive home presents a premier family base. Inviting open-plan living complete with well-appointed kitchen comprising granite benchtops and stainless-steel appliances flows effortlessly to an idyllic hedge-lined courtyard, creating a delightful setting for entertaining. First floor highlights include an elegant north-facing main bedroom and extensive built-in robes. An additional two bedrooms, one with walk-in robe, retreat and bathroom complete the picture. Also includes powder room, polished timber floors, exquisite period details, hidden cellar and security system.

16mountainstreet-southmelbourne.com

3 1.5

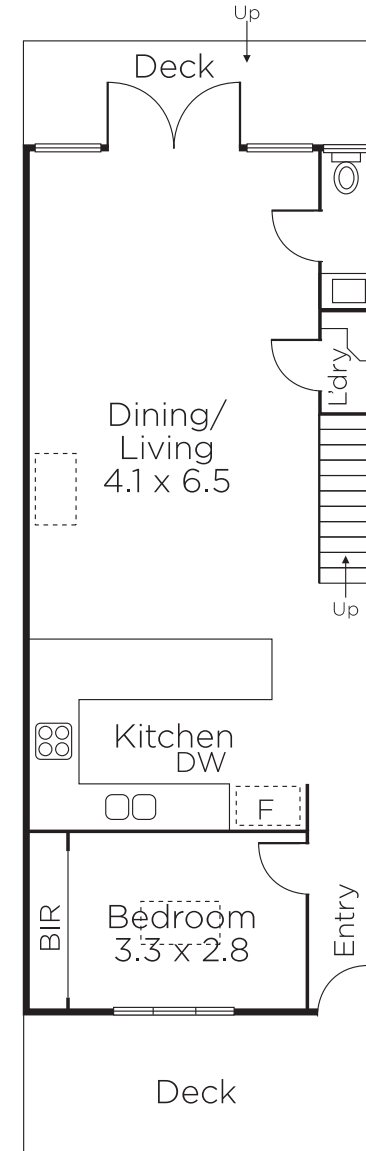
Auction Saturday 19th August at 10.30am

Sam Hobbs 0404 164 444

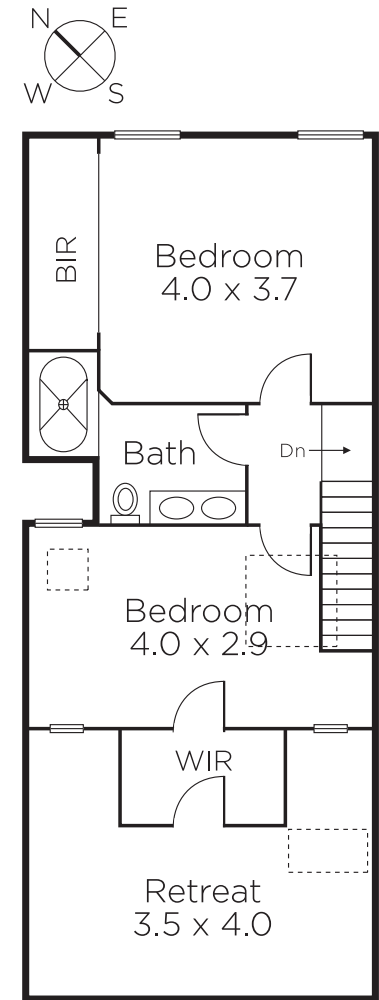
Michael Paproth 0488 300 800

101 Dundas Place Albert Park
marshallwhite.com.au


MARSHALLWHITE



GROUND FLOOR



FIRST FLOOR

Disclaimer: Information provided is believed to be accurate as at the date of printing, no responsibility is taken for any errors or omissions. It is your responsibility to obtain independent, professional advice. Personal information collected from you is for security purposes and to contact you should the property sell prior to auction. We may use this information to provide you with other real estate services including referrals to authorised financial services' providers. Visit our website at www.marshallwhite.com.au for our privacy policy.