



16


MARSHALLWHITE

16 Mary Street
St Kilda West



Rare and Remarkable Bayside Beauty c1880

An exquisite example of it's 1880's Boom Style beginnings, this balconied Victorian is a rare illustration of the area's early architectural heritage, showcasing grand period aesthetics matched by sublime interior design by revered Australian fashion icon Alannah Hill. Just a block from the beach, this home reveals a series of sophisticated living and dining rooms with marble fireplaces and soaring ceilings, a striking marble kitchen and dining domain. Three upstairs bedrooms, private main with balcony, open fireplace, dressing room and marble ensuite. Powder room. NW courtyard. A unique blend of glamour and style.

16marystreet-stkildawest.com

Auction Saturday 17th June at 1.30pm

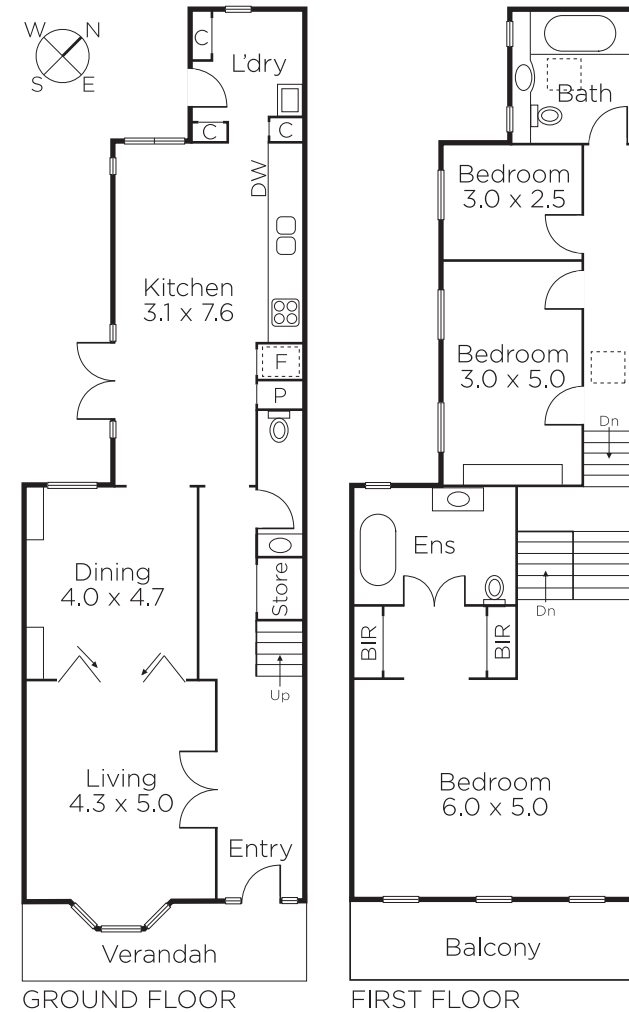
Adrian Wood 0404 861 508

Michael Paproth 0488 300 800

Sarah Carey 0420 246 200

101 Dundas Place Albert Park
marshallwhite.com.au


MARSHALLWHITE



Disclaimer: Information provided is believed to be accurate as at the date of printing, no responsibility is taken for any errors or omissions. It is your responsibility to obtain independent, professional advice. Personal information collected from you is for security purposes and to contact you should the property sell prior to auction. We may use this information to provide you with other real estate services including referrals to authorised financial services' providers. Visit our website at www.marshallwhite.com.au for our privacy policy.