



MARSHALLWHITE


16 Coppin Street
Malvern East





"Ariadne" - c1900

Magnificently situated within 830sqm approx. garden surrounds in the heart of the Gascoigne Estate walking distance to Malvern Primary, Malvern station and Caulfield Station and Central Park, this glorious c1900 solid brick Federation residence offers immediate family appeal while also providing scope to easily update in the future (STCA). Exquisite period details are featured through the wide entrance hall, elegant sitting room with open fireplace and a grand formal dining room also with an open fire. Timber floors flow through the generous living room with a marble open fire, conservatory style dining, well appointed timber kitchen and a sensational recreation or billiards room. The living areas open out to an expansive private leafy garden. An abundance of accommodation comprises a beautiful main bedroom with open fireplace, walk in robe and en-suite, a second double bedroom/ study with open fire and built in robe and a bathroom, while upstairs there are three additional bright bedrooms with built in robes and a third bathroom. "Ariadne" is also appointed with security intercom, irrigation, laundry, water tank, ample storage and off street parking.

4/5  3  2 

Auction Saturday 20th October at 11.30am

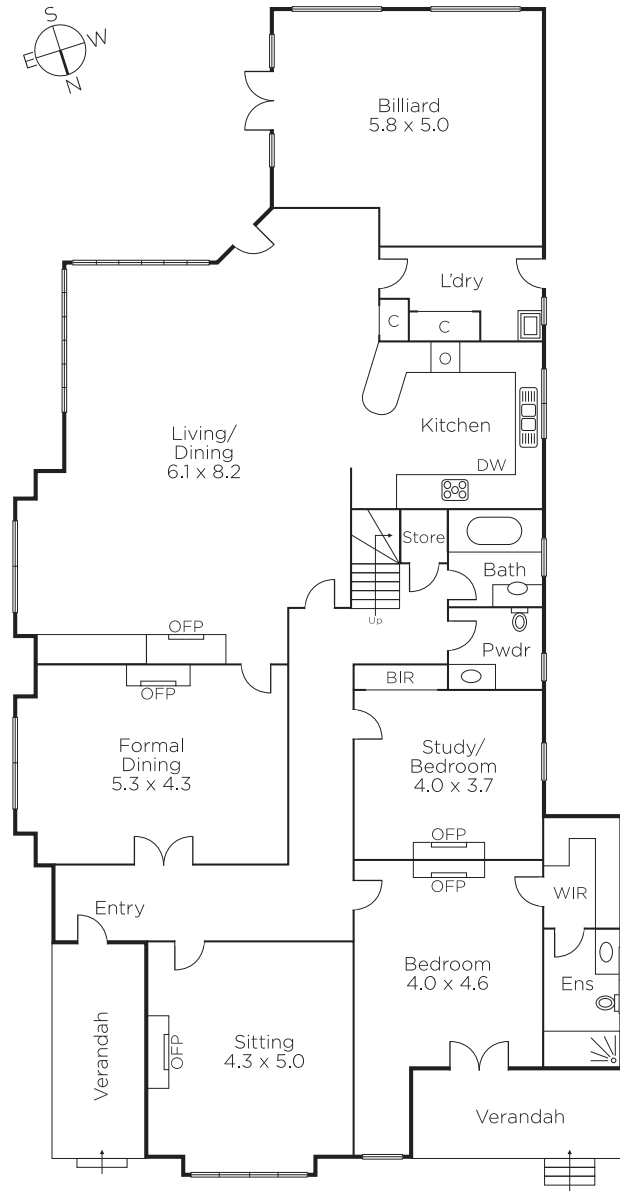
Rae Tomlinson
0418 336 234

Hamish Tostevin
0408 004 766

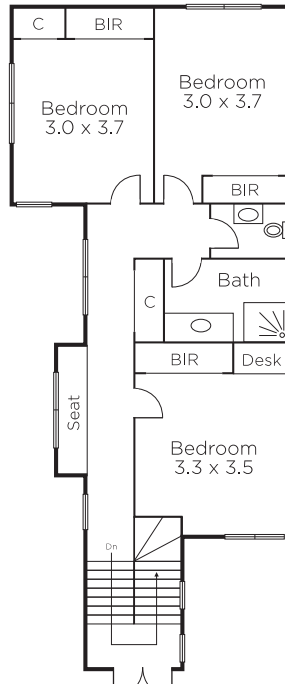
James Tomlinson
0409 427 483


MARSHALLWHITE

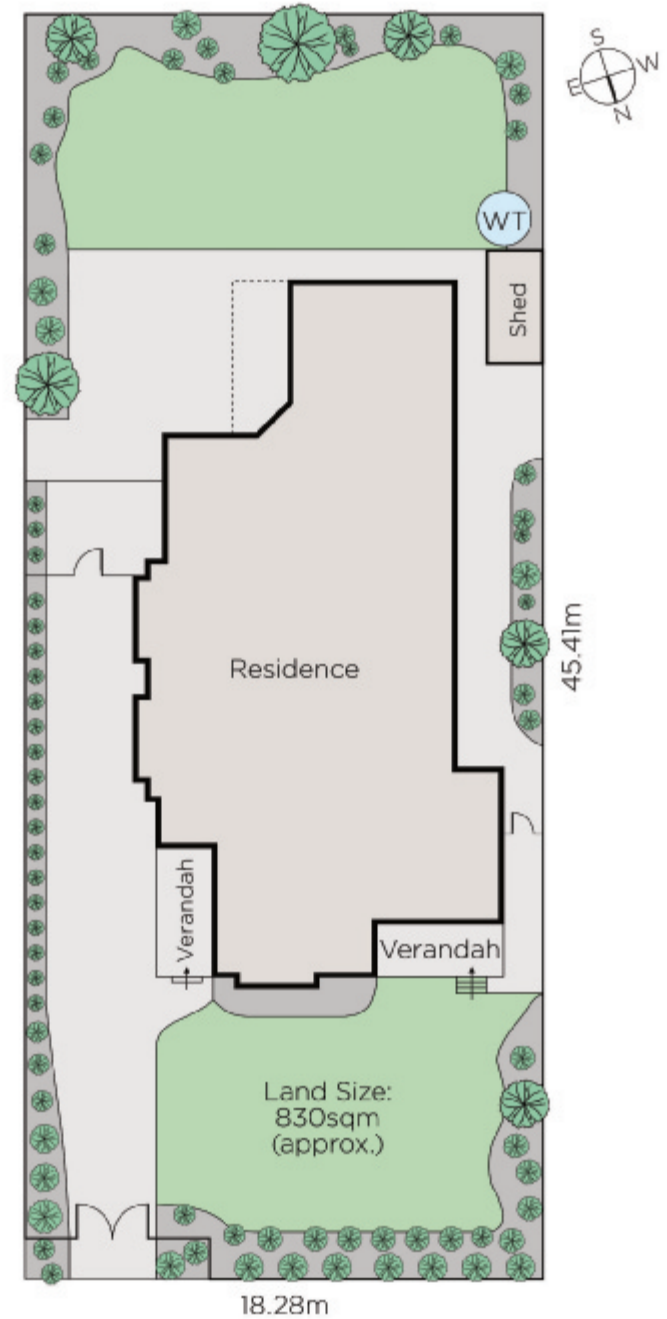
1111 High Street, Armadale



GROUND FLOOR



FIRST FLOOR



Disclaimer: Information provided is believed to be accurate as at the date of printing, no responsibility is taken for any errors or omissions. It is your responsibility to obtain independent, professional advice. Personal information collected from you is for security purposes and to contact you should the property sell prior to auction. We may use this information to provide you with other real estate services including referrals to authorised financial services' providers. Visit our website at www.marshallwhite.com.au for our privacy policy.