




MARSHALLWHITE

16 Canterbury Road
Toorak





"Dakota House"

At the end of a tranquil cul de sac yet only moments from Hawksburn Village, Toorak Village, Orrong Park, Schools and Toorak station, this majestic double fronted c1880's Victorian residence's impressively proportioned, stylishly presented and radiantly light dimensions are perfect for immediate family enjoyment while also offering exciting scope to easily update in the future (STCA).

Behind a very broad picturesque garden shaded by a soaring Golden Elm tree, the imposing central arched hallway introduces a glamorous sitting room with open fireplace, three double bedrooms with built in robes, a fourth glorious main bedroom with en-suite and study or nursery and second bathroom with laundry. The well appointed modern kitchen and sunny living and dining room open to a private bluestone terrace and the deep northeast facing private leafy garden with two garages and additional off street parking. Land size: 771 sqm approx.

16canterburyroad-toorak.com

4  2  4 

Auction Saturday 2nd December at 10.30am

Fraser Cahill 0400 592 572

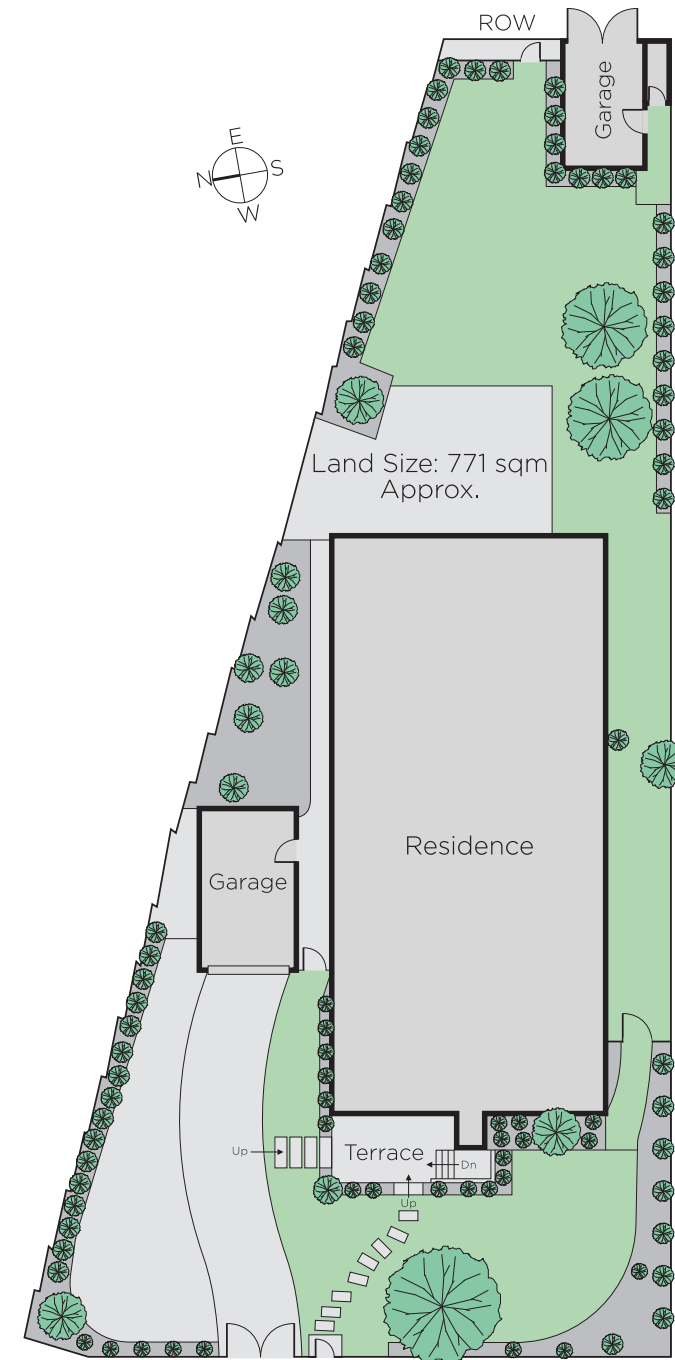
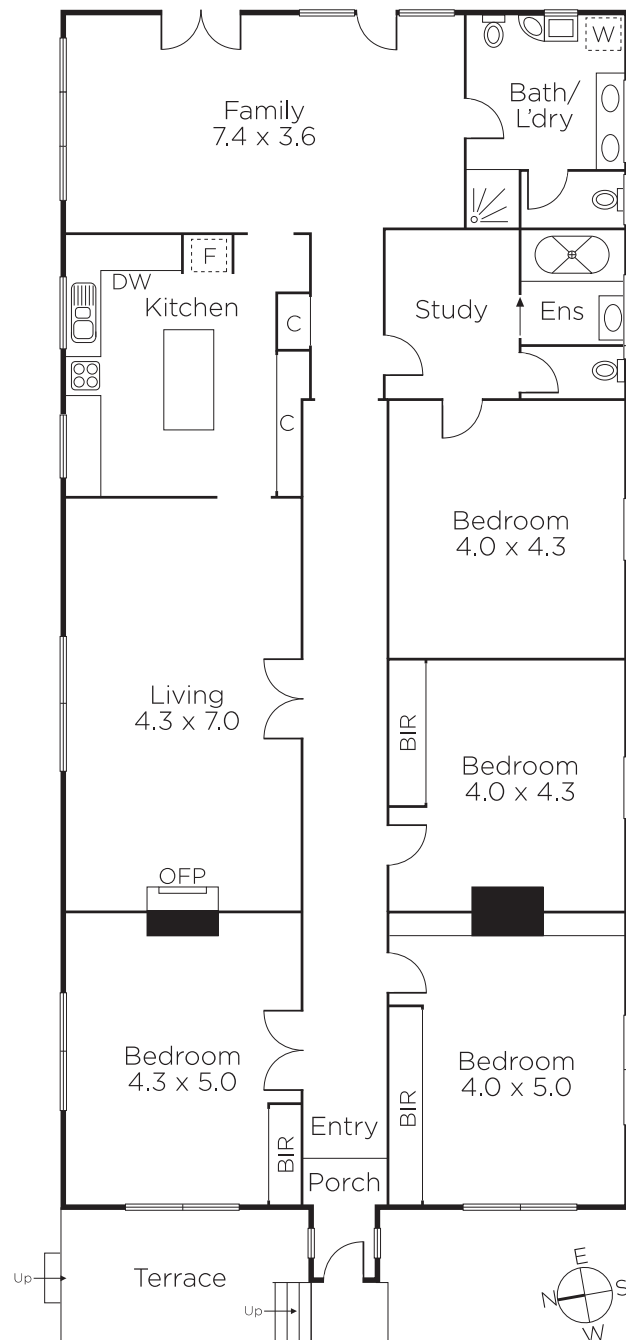
Brendan Allen 0499 229 007

Madeline Kennedy 0411 873 913

1111 High Street Armadale

marshallwhite.com.au


MARSHALLWHITE



Disclaimer: Information provided is believed to be accurate as at the date of printing, no responsibility is taken for any errors or omissions. It is your responsibility to obtain independent, professional advice. Personal information collected from you is for security purposes and to contact you should the property sell prior to auction. We may use this information to provide you with other real estate services including referrals to authorised financial services' providers. Visit our website at www.marshallwhite.com.au for our privacy policy.