



MARSHALLWHITE

16 Benjamin Street  
Box Hill North





## Family Focused Living

Many lifestyle opportunities complement this delightful brick home surrounded by a leafy well maintained garden and positioned in a sought-after neighbourhood; preceded by a wisteria clad verandah and appealing façade. The accommodation features polished timber floors plus a spacious family living and dining area, sky lit kitchen/meals equipped with quality S/S appliances flowing to entertainers terrace and large rear garden - perfect for relaxed outdoor living or future extending (STCA). Complemented by 3-bedrooms (BIRs) and fully-tiled family bathroom. Land size: 586sqm approx.

16benjaminstreet-boxhillnorth.com

3 1 2

Auction Saturday 3rd March at 2.30pm

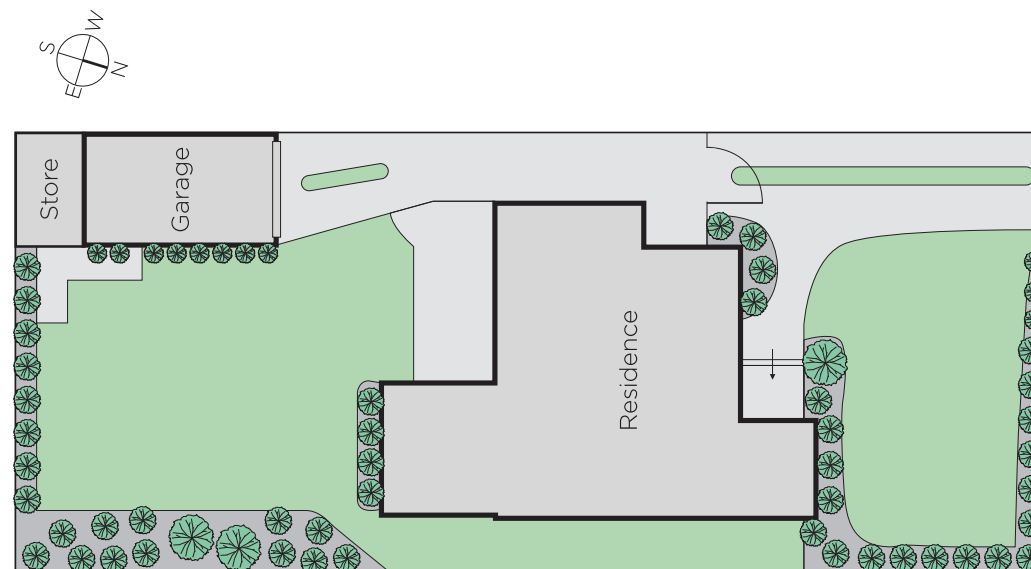
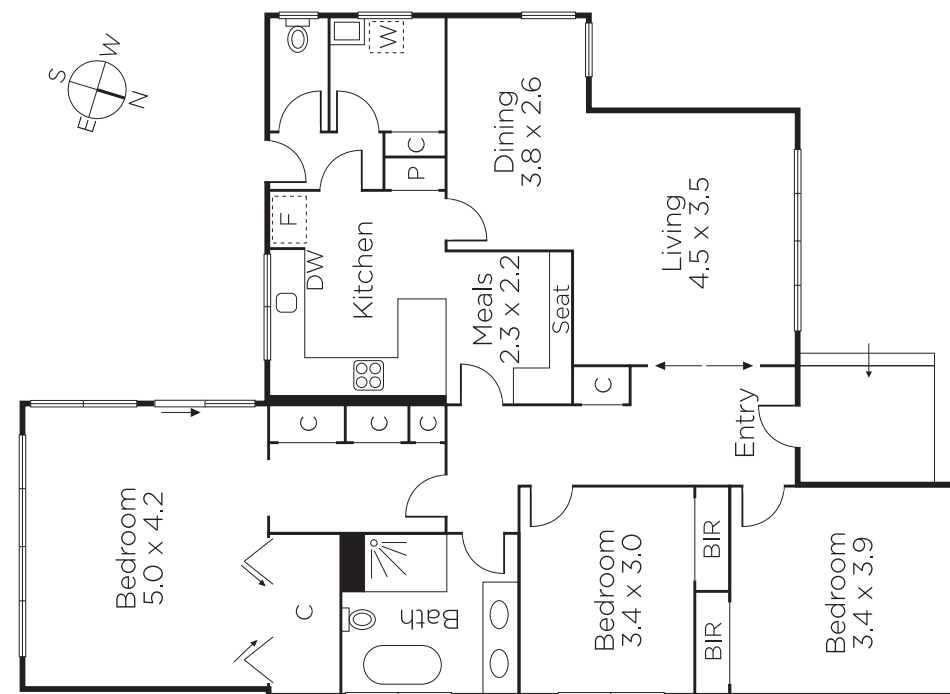
Mike Beardsley  
0476 777 004

Mark Sutherland  
0418 691 585

Nick Ptak  
0413 370 442

  
MARSHALLWHITE

801 Glenferrie Road, Hawthorn



Disclaimer: Information provided is believed to be accurate as at the date of printing, no responsibility is taken for any errors or omissions. It is your responsibility to obtain independent, professional advice. Personal information collected from you is for security purposes and to contact you should the property sell prior to auction. We may use this information to provide you with other real estate services including referrals to authorised financial services providers. Visit our website at [www.marshallwhite.com.au](http://www.marshallwhite.com.au) for our privacy policy.