



CISELA-COURT
12



MARSHALLWHITE

1/6-8 Ercildoune Avenue
Hawthorn



"Gisela Court" c1938 - Quiet Cul-De-Sac Living

A quiet tree-lined cul-de-sac in the Scotch College Hill precinct forms a leafy backdrop for this late 1930s clinker brick unit. Enjoying street frontage the fully refurbished home features a flexible floor-plan with an entrance hall flowing to a living room with OFP overlooking the landscaped front garden and a paved alfresco dining and entertaining area. Plus three bedrooms or 2+study or dining room, an updated bathroom/laundry and kitchen equipped with quality imported appliances. Other features include new carpets, Daikin ducted heating & cooling, garden shed and carport.

3 1 1

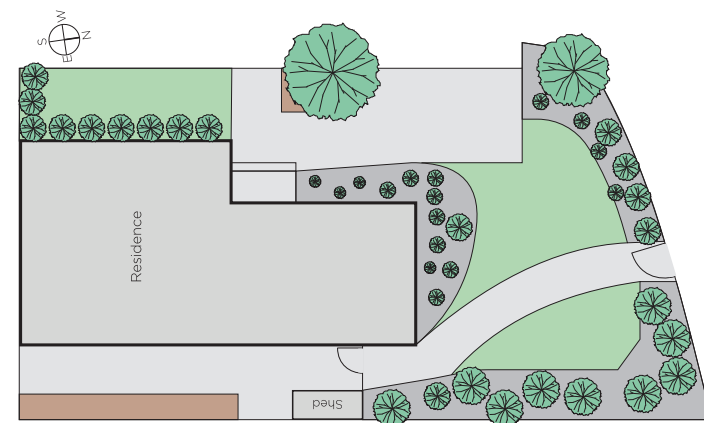
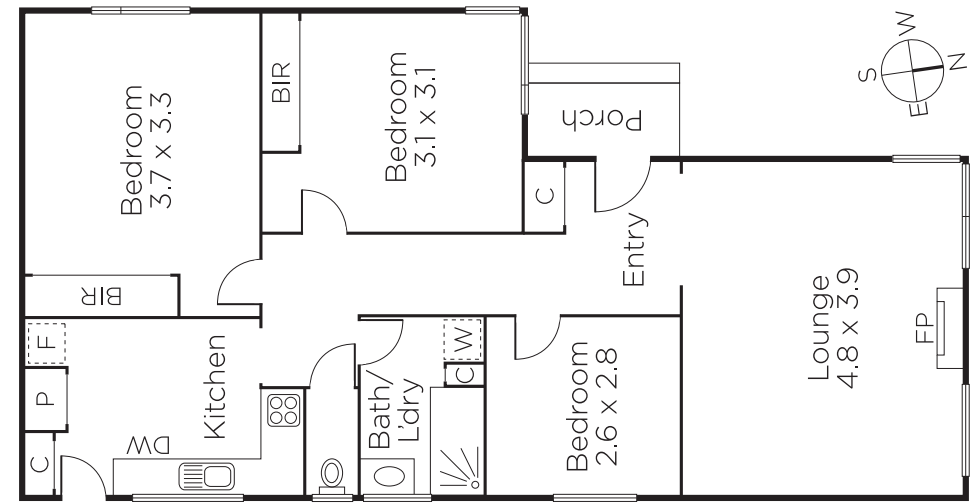
Auction Saturday 17th November at 9.30am

David Smith
0402 361 680

Charlie Tostevin
0431 713 205


MARSHALLWHITE

801 Glenferrie Road, Hawthorn



Disclaimer: Information provided is believed to be accurate as at the date of printing, no responsibility is taken for any errors or omissions. It is your responsibility to obtain independent, professional advice. Personal information collected from you is for security purposes and to contact you should the property sell prior to auction. We may use this information to provide you with other real estate services including referrals to authorised financial services providers. Visit our website at www.marshallwhite.com.au for our privacy policy.