

Streetfront, Standalone Style in the Sandbelt

buxton

1/55 Victor Road Bentleigh East



3 2 2

Offering an easy-access front position in a dual occupancy development backing the Yarra Yarra Golf Course, this 3-bedroom, 2-bathroom home on 311sqm approx offers an elegant family floorplan with a large lounge overlooking lawned front gardens, dining opening to a paved rear courtyard & a hallway lined with robe-fitted bedrooms. A showcase of timeless style with neutral bathrooms including an ensuite for the master (WIR) & a garden-view kitchen with quality appliances, this centrally heated & cooled home features an auto garage beyond off street parking plus the value adding benefits of no owners corp or common land.

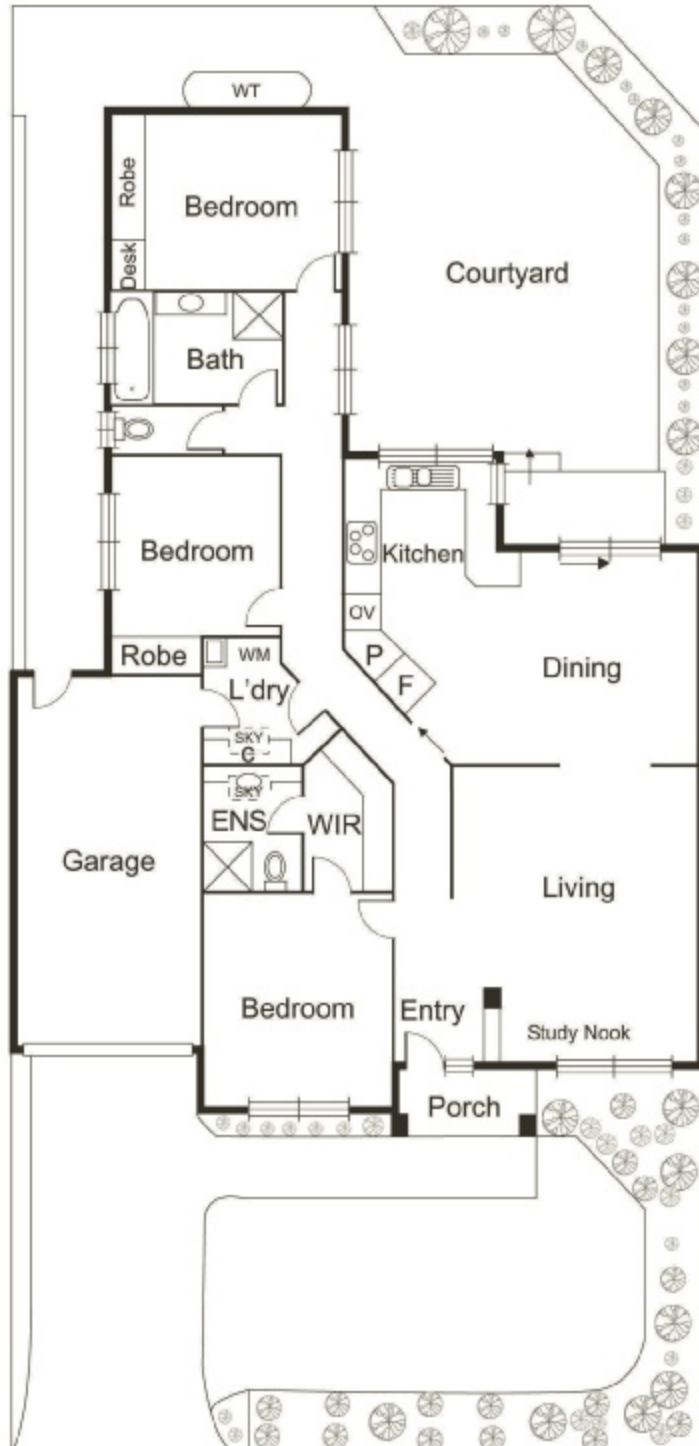
Auction

Saturday 8 September - 11.30am

Contact

Sam Maley 0433 971 116
smaley@buxton.com.au

Felicity Locandro 0437 608 212
flocandro@buxton.com.au



We have obtained all information in this document from sources we believe to be reliable; however, we cannot guarantee its accuracy. Prospective purchasers are advised to carry out their own investigations.

