



MARSHALLWHITE

155 Summerhill Road
Glen Iris



45.11m

20.11m

907sqm
(approx.)



Compelling Family Appeal

Behind the English style exterior of this solid brick period residence, brilliantly zoned interior spaces of generous proportions deliver the flexibility & style to effortlessly respond to a myriad of family requirements in a coveted location near Ashburton Village & station, Leo's Supermarket, schools & Hill 'n' Dale Park. Classic elegance defines the central hall, beautiful sitting room with a gas fire & captivating formal dining room with open fireplace. The gourmet kitchen boasting stone benches & a generous, light-filled living & dining room with open fire opens to the deep northeast garden with a large covered deck & expansive terrace. An abundance of versatile family accommodation comprises the gorgeous main bedroom with walk in robe & stylish en-suite, a children's zone with two additional double bedrooms with built in robes and bathroom, & a self-contained 1 bedroom apartment with separate entrance, built in robe, chic bathroom & living room with kitchenette. In addition, there is a huge upstairs retreat or 5th bedroom with built in robe & en-suite. A sensational family domain, it also includes water tank, irrigation, a/c, gas ducted heating, laundry, work shop & internally accessed triple garage. Land size: 907sqm approx.

155summerhillroad-gleniris.com

5  4  5 

Auction Saturday 26th May at 10.30am

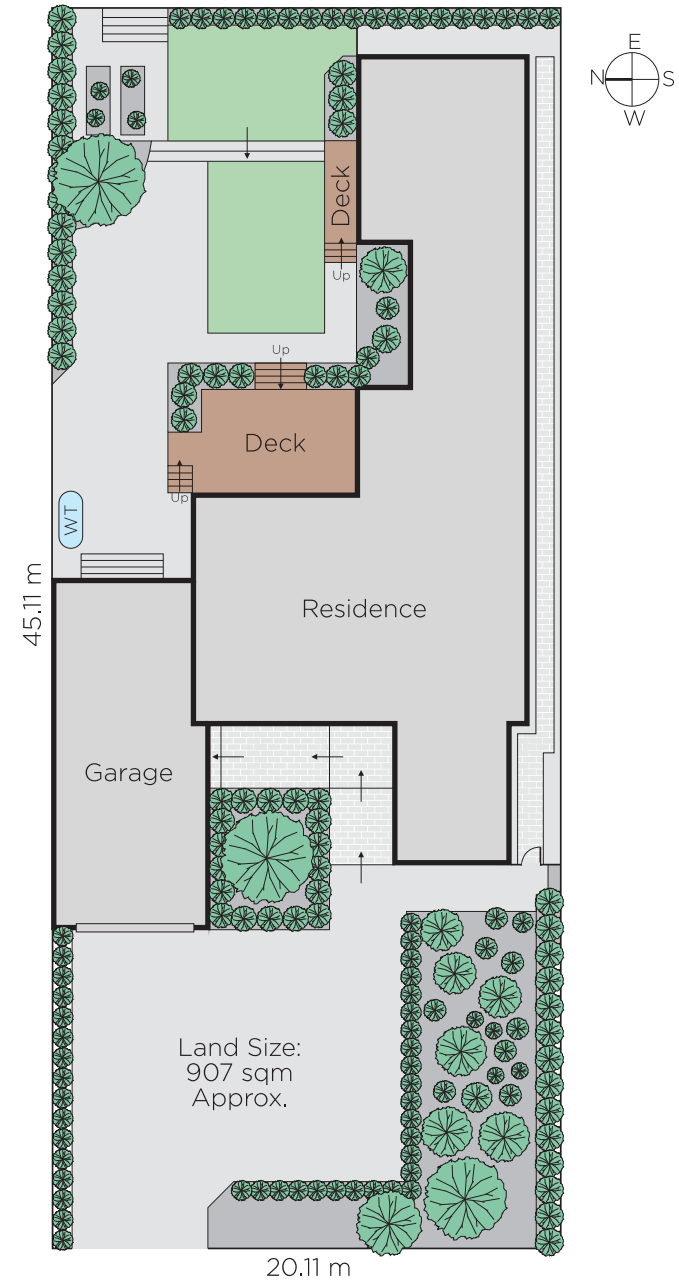
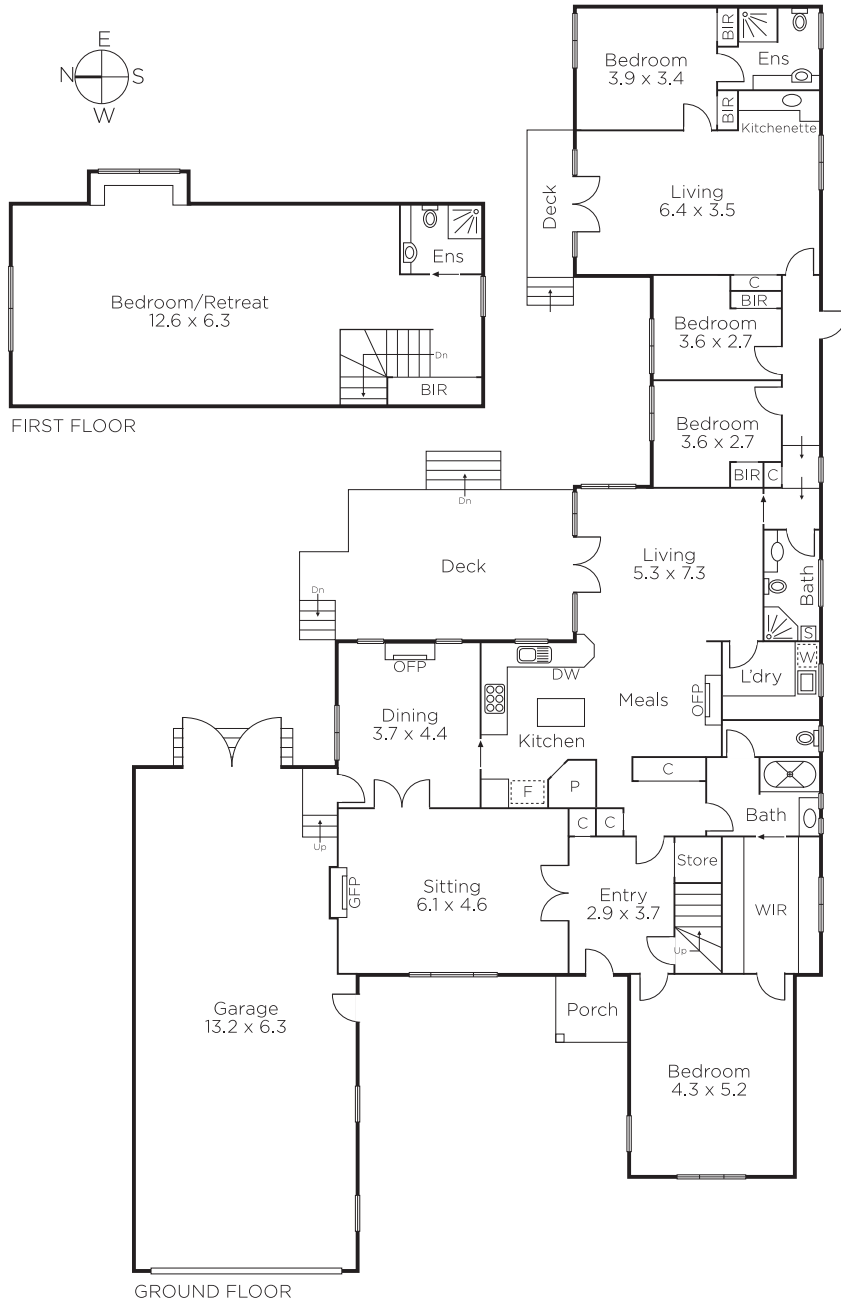
Rae Tomlinson
0418 336 234

James Tomlinson
0408 350 684

Hugh Tomlinson
0409 427 483


MARSHALLWHITE

1111 High Street, Armadale



Disclaimer: Information provided is believed to be accurate as at the date of printing, no responsibility is taken for any errors or omissions. It is your responsibility to obtain independent, professional advice. Personal information collected from you is for security purposes and to contact you should the property sell prior to auction. We may use this information to provide you with other real estate services including referrals to authorised financial services' providers. Visit our website at www.marshallwhite.com.au for our privacy policy.