

15.24m

691sqm
(approx.)

45.4m


MARSHALLWHITE

153 Mountain View
Road
Balwyn North



Sixties Charm, Significant Opportunity

Owned by the one family since built in 1963, this substantial brick residence's expansive proportions, original sixties allure and deep private 691sqm approx. allotment within the Balwyn High School zone highlights its outstanding scope to renovate or rebuild near Koonung Creek Reserve, schools, Bellevue Village, transport, golf courses and freeway access (STCA).

Northern light streams through the exceptionally spacious living and dining rooms and well-appointed kitchen with casual dining area opening to the northeast garden. The four double bedrooms are accompanied by a bathroom and shower-room. A large rumpus room is adjacent to the double garage.

153mountainviewroad-balwynnorth.com

4 1 2

Auction Saturday 24th June at 11.30am

Shamit Verma 0401 137 597

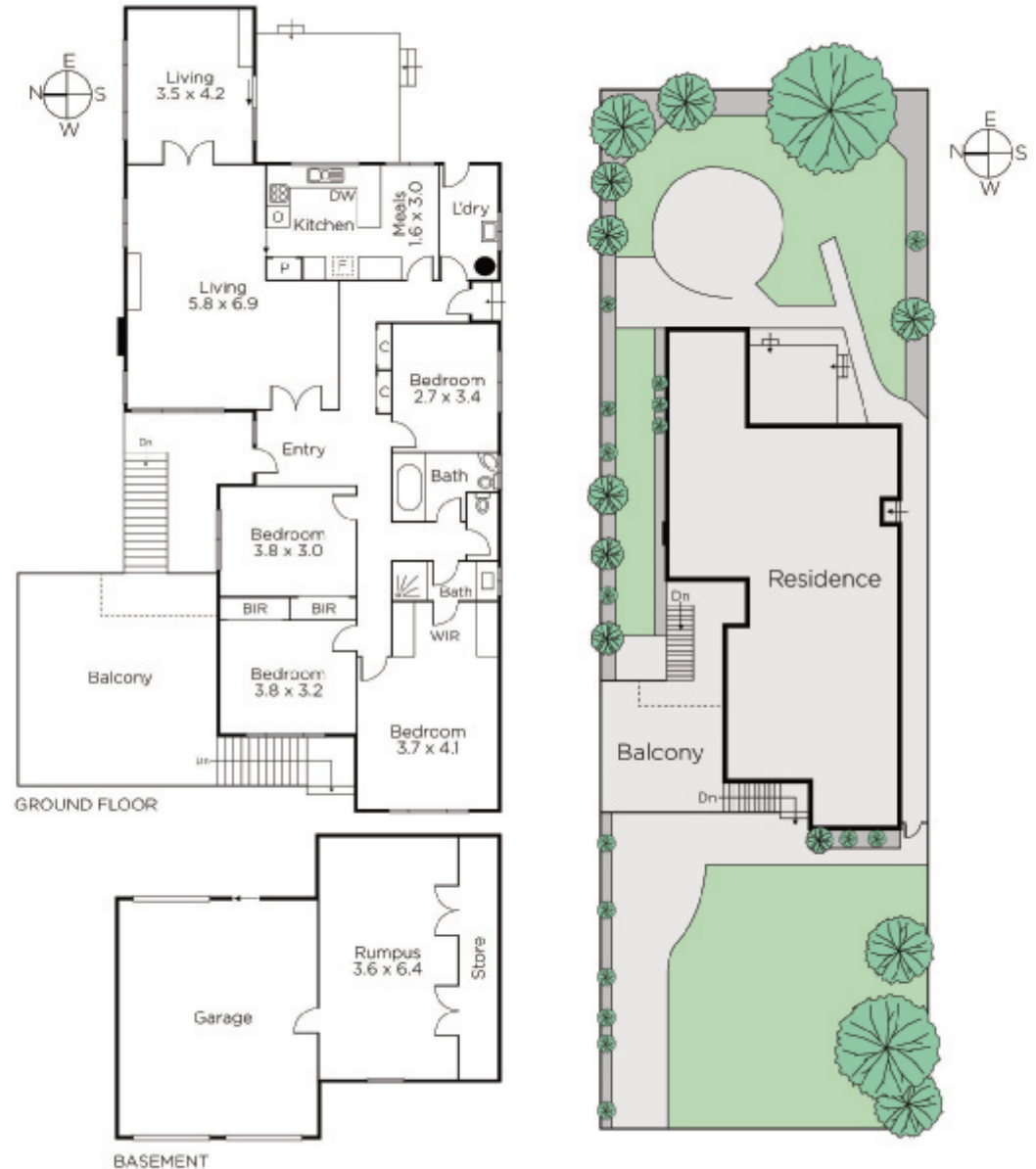
Scarlett Hang 0405 054 888

Ross Stryker 0401 318 772

801 Glenferrie Road Hawthorn

marshallwhite.com.au


MARSHALLWHITE



Disclaimer: Information provided is believed to be accurate as at the date of printing, no responsibility is taken for any errors or omissions. It is your responsibility to obtain independent, professional advice. Personal information collected from you is for security purposes and to contact you should the property sell prior to auction. We may use this information to provide you with other real estate services including referrals to authorised financial services' providers. Visit our website at www.marshallwhite.com.au for our privacy policy.