



MAX CLEARANCE 2.1 METERS


MARSHALLWHITE
ONE

15/22 Wattle Road
Hawthorn



Executive Prestige with Brilliant City Views

With captivating views of the city skyline creating a sophisticated and dramatic backdrop to the generous proportions and immaculate quality of this instantly striking and permanently engaging, two bedroom apartment, this impressive home proudly offers a superior style of inner-urban executive living or investing. Miele kitchen appliances, stone benches and impressive glass splash backs create an enduring appeal to an open-plan kitchen / meals / living that frames city views and spills out to a broad, west-facing balcony. Also featuring an ensuite, robes in each bedroom, an alcove study and European laundry, the home is unquestionably geared for a discerning market and also offers secure video entry, basement parking and storage. An enviable urban location in this premium street allows you to wander to Glenferrie Rd for shops, cafes, restaurants and transport, whilst easy city access is also a huge drawcard.

15-22wattleroad-hawthorn.com

2 2 1

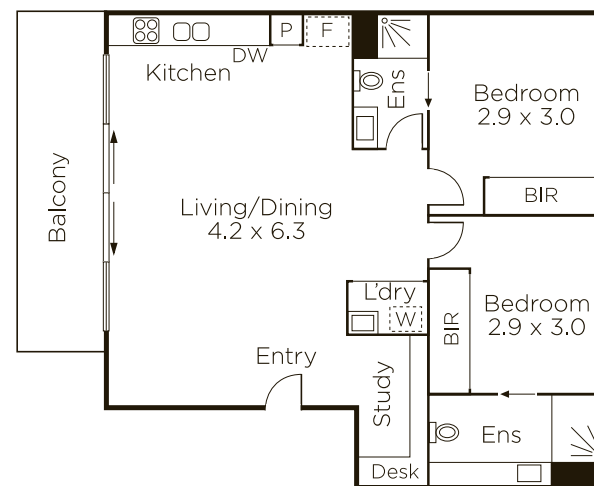
Auction Saturday 25th November at 12noon

Bethany Wilkinson 0449 285 813

Jack Moss 0439 378 954

801 Glenferrie Road Hawthorn

9822 9999 mwone.com.au



Store

MARSHALLWHITE
ONE

Disclaimer: Information provided is believed to be accurate as at the date of printing, no responsibility is taken for any errors or omissions. It is your responsibility to obtain independent, professional advice. Personal information collected from you is for security purposes to contact you should the property sell prior to auction. We may use this information to provide you with other real estate services including referrals to authorized financial services providers. Visit our website at www.mwone.com.au for our privacy policy.