



MARSHALLWHITE  
ONE

15/175 Power Street  
Hawthorn



## Eldoret: A Modernist Classic

Exceptionally light and spacious, this top-floor one bedroom apartment in the iconic Eldoret building, showcases classic modernist features. Comprising generous open plan living and dining with floor-to-ceiling windows, kitchen with gas cooking, spacious bedroom featuring built in robes and neat bathroom with separate shower and bathtub. Offering beautiful landscaped gardens, recently refurbished building, secure entry via Lisson Grove, and an undercover car space. Superbly located in Hawthorn's exclusive riverside precinct, with both lifestyle and investment appeal, this home provides easy access to city transport, major shopping centres, cafes and Yarra parklands.

15-175powerstreet-hawthorn.com

1 1 1

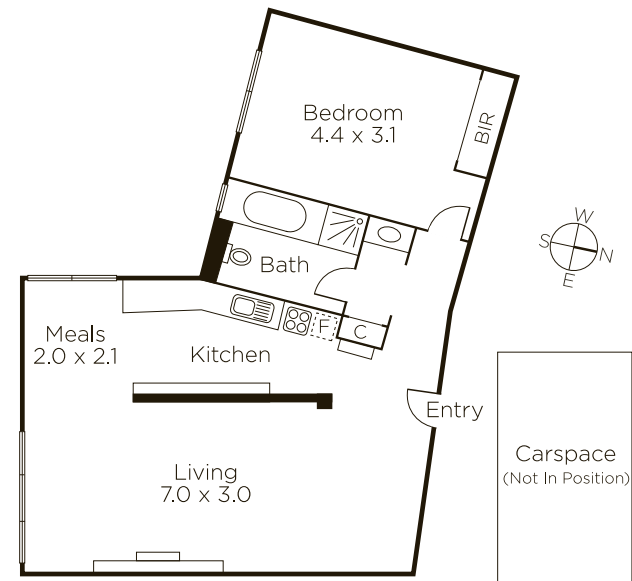
Auction Saturday 2nd June at 9.30am

Ash Sachdev 0402 425 661

James Hill 0402 421 154

801 Glenferrie Road Hawthorn

9822 9999 mwone.com.au



  
MARSHALLWHITE  
ONE

Disclaimer: Information provided is believed to be accurate as at the date of printing, no responsibility is taken for any errors or omissions. It is your responsibility to obtain independent, professional advice. Personal information collected from you is for security purposes to contact you should the property sell prior to auction. We may use this information to provide you with other real estate services including referrals to authorized financial services providers. Visit our website at [www.mwone.com.au](http://www.mwone.com.au) for our privacy policy.