



Actual View


MARSHALLWHITE
15.1/193 Domain Road
South Yarra



Breathtaking Views, Botanic Gardens Precinct

On the 15th level of the iconic Robin Boyd designed "Domain Park", this original apartment's impressively proportioned north-facing dimensions command spectacular views of the Botanic Gardens, the city, MCG, AAMI Park & the bay. The exceptionally generous living room with an adjacent dining room & well-appointed kitchen opens to a wide covered north balcony overlooking the Botanic Gardens. The main bedroom with walk in robe & en-suite/bathroom is accompanied by two additional bedrooms with built in robes, shower room & powder-room. Includes lift access, video intercom, laundry & 2 car-spaces.

15-1-193domainroad-southyarra.com

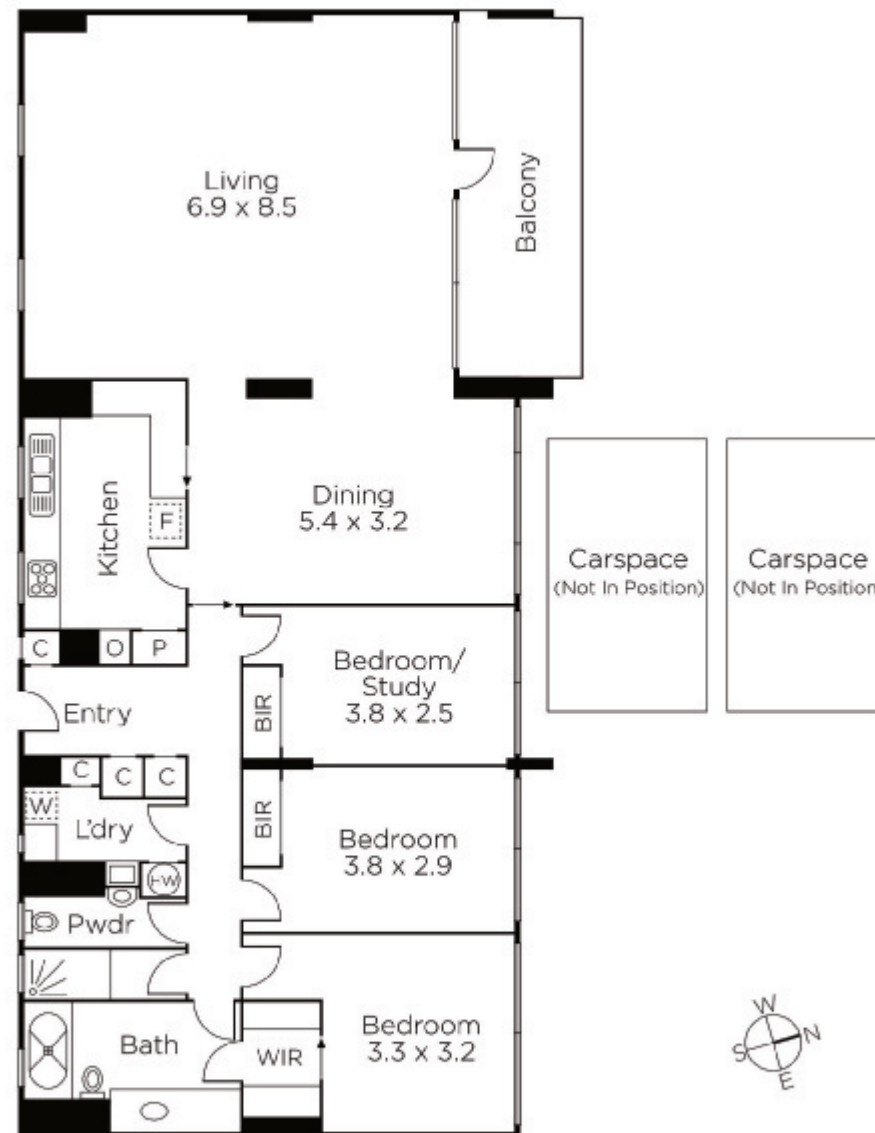
3 2 2

Auction Saturday 28th April at 12.30pm

James Redfern
0412 360 667

Bernadette Kiraly
0401 656 052

Mark Harris
0414 799 343




MARSHALLWHITE

1111 High Street, Armadale

Disclaimer: Information provided is believed to be accurate as at the date of printing, no responsibility is taken for any errors or omissions. It is your responsibility to obtain independent, professional advice. Personal information collected from you is for security purposes and to contact you should the property sell prior to auction. We may use this information to provide you with other real estate services including referrals to authorised financial services providers. Visit our website at www.marshallwhite.com.au for our privacy policy.