



MARSHALLWHITE

15 Bonfield Avenue
Hawthorn East





"Dandongadale" - c1920's

An exemplary family domain, this captivating c1920's solid brick residence's exceptional proportions, intelligently zoned floor-plan and blend of period elegance and contemporary style ticks the box in terms of family appeal. A highly sought after address close to Anderson Park, schools, trams and Tooronga Village with train station and freeway access further enhancing its impeccable family credentials. Jarrah floors flow through the wide entrance hall to an elegant sitting room with gas fireplace, formal dining room opening to a north-facing courtyard and a well-appointed study of generous size. Expansive in scale, the family living room, light-filled dining area and superb live kitchen with large butler's pantry open to the deep private northeast garden with entertaining terrace. A downstairs bedroom and bathroom are complemented upstairs by a sensational main bedroom with sunny covered balcony, en-suite and walk in robe, two additional double bedrooms with built in robes, a retreat or 5th bedroom and bright bathroom. Set well back on a 682sqm allotment, it also includes hydronic heating, wine cupboard, laundry, attic storage, garden shed and double carport.

15bonfieldavenue-hawthorneast.com

5  3  2 

Auction Saturday 23rd September at 11.30am

Duane Wolowiec 0418 567 581

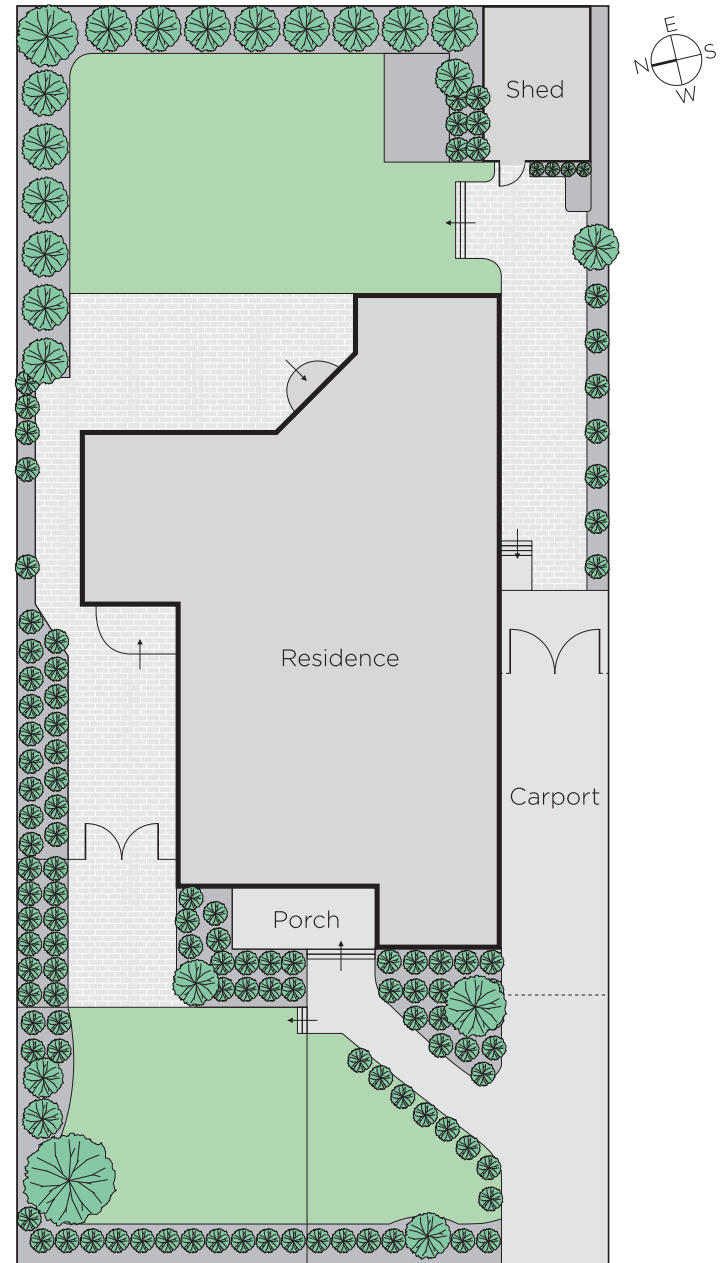
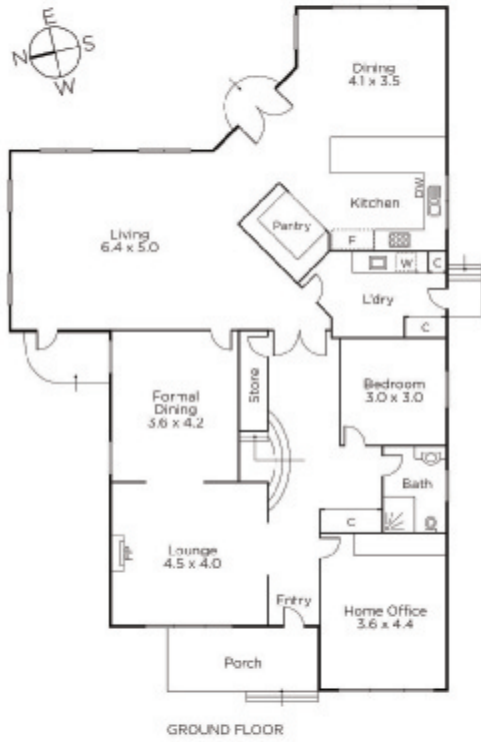
Sophie Su 0425 270 125

Stuart Evans 0402 067 710

801 Glenferrie Road Hawthorn

marshallwhite.com.au


MARSHALLWHITE



Disclaimer: Information provided is believed to be accurate as at the date of printing, no responsibility is taken for any errors or omissions. It is your responsibility to obtain independent, professional advice. Personal information collected from you is for security purposes and to contact you should the property sell prior to auction. We may use this information to provide you with other real estate services including referrals to authorised financial services' providers. Visit our website at www.marshallwhite.com.au for our privacy policy.