



MARSHALLWHITE

1/5 Belmont Street
Surrey Hills





Serene, Stylish and Spacious

Only just completed, this superb brand new contemporary residence enjoying its own street frontage, delivers the style, level of finish and proportions for a first class modern family lifestyle near Surrey Hills station, Union Rd shops and Wattle Park.

Wide oak floors flow through a light-filled study area and generous open plan living and dining room with a gourmet kitchen appointed with Miele appliances and stone benches. The living spaces open to a private west-facing garden and entertaining deck. The main bedroom with walk in robe and designer en-suite is serenely situated on the ground level while a fabulous children's zone upstairs comprises three additional bedrooms with built in robes and a stylish bathroom with freestanding bath.

At the front of a boutique enclave of just 3, it also includes video-intercom, heating/cooling, powder-room, laundry and internally accessed double garage.

4  2  2 

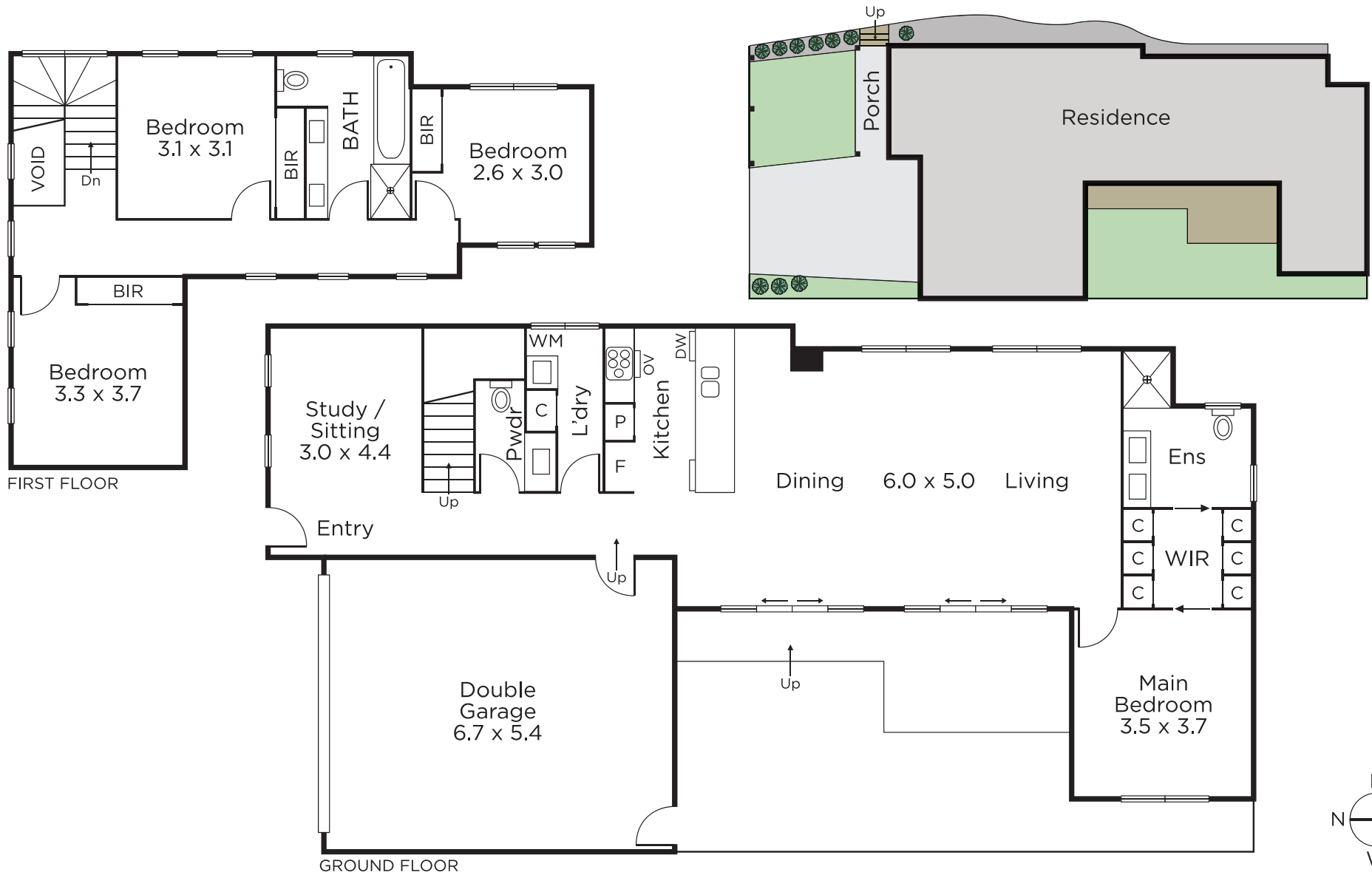
Auction Saturday 16th February at 12.30pm

Davide Lettieri
0414 018 707

Andrew Gibbons
0407 577 007


MARSHALLWHITE

801 Glenferrie Road, Hawthorn



Disclaimer: Information provided is believed to be accurate as at the date of printing, no responsibility is taken for any errors or omissions. It is your responsibility to obtain independent, professional advice. Personal information collected from you is for security purposes and to contact you should the property sell prior to auction. We may use this information to provide you with other real estate services including referrals to authorised financial services' providers. Visit our website at www.marshallwhite.com.au for our privacy policy.