




MARSHALLWHITE

149 Albert Street
Port Melbourne



The Consummate Lifestyle Package

This stunning single level contemporary residence's stylish interior spaces and equally captivating north-facing landscaped garden is matched only by its enviable location, moments from Bay Street, the beach, parks, schools and trams to the CBD.

A wide central hall featuring high ceilings and oak floors leads to three beautiful bedrooms with built-in robes and an elegant bathroom. The sleek white stone Miele kitchen and spacious living/dining room open through bi-fold doors to a rare landscaped north garden. Includes video security, hydronic heating, RC/air-conditioning, laundry/powder room and remote irrigation. Land: 278sqm

149albertstreet-portmelbourne.com

3 1

Auction Saturday 20th May at 1.30pm

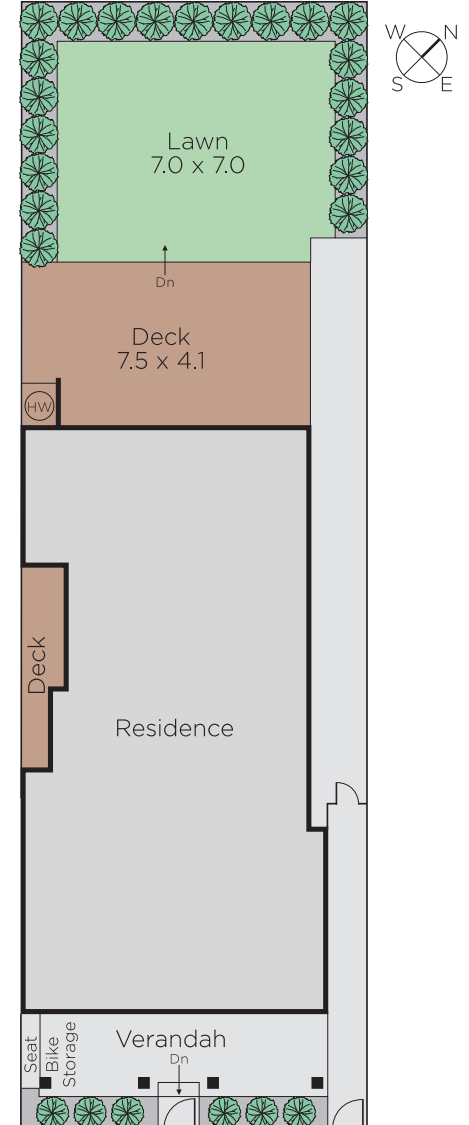
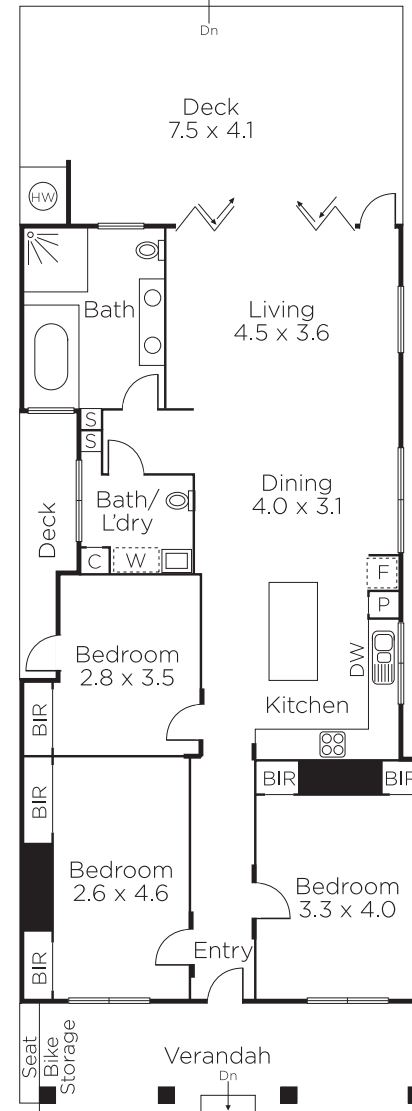
Oliver Bruce 0409 856 599

Sarah Wood 0408 902 827

Nicholas Hoo 0435 728 272

101 Dundas Place Albert Park
marshallwhite.com.au


MARSHALLWHITE



Disclaimer: Information provided is believed to be accurate as at the date of printing, no responsibility is taken for any errors or omissions. It is your responsibility to obtain independent, professional advice. Personal information collected from you is for security purposes and to contact you should the property sell prior to auction. We may use this information to provide you with other real estate services including referrals to authorised financial services' providers. Visit our website at www.marshallwhite.com.au for our privacy policy.