



144


MARSHALLWHITE

144 Ashburn Grove
Ashburton





Designer Style and Luxury

Lavishly appointed, technologically advanced & surprisingly spacious, this stunning residence raises the bar in terms of design, finish & luxury. Superbly situated on the Anniversary Trail, it offers close proximity to Ashburton Village, Gardiners Creek, Alamein & East Malvern stations & schools. Grey Ironbark floors flow through the entrance hall to a premium Blum kitchen appointed with Siemens appliances, Liebherr fridge/freezer, stone benches & butler's pantry. The generous living & dining room warmed by a gas fireplace opens out to a louvre covered alfresco dining terrace with full BBQ kitchen & a deep northwest private garden with gate to the Anniversary Trail. A versatile downstairs main bedroom or media room with ensuite & walk in robe opens to a side garden. Upstairs, an exquisite main suite with custom fitted dressing room/WIR & opulent ensuite is complemented by two additional double bedrooms with built in robes & designer family bathroom with freestanding bath. Comprehensively appointed with smart home automation, alarm, video intercom, CCTV, zoned heating & cooling, audio wiring, solar panels, powder-room, laundry, remote blinds, ducted vacuum & internally accessed double garage. Land size: 438sqm approx.

144ashburngrove-ashburton.com

4  3  2 

Auction Saturday 5th August at 10.30am

Daniel Wheeler 0411 676 058

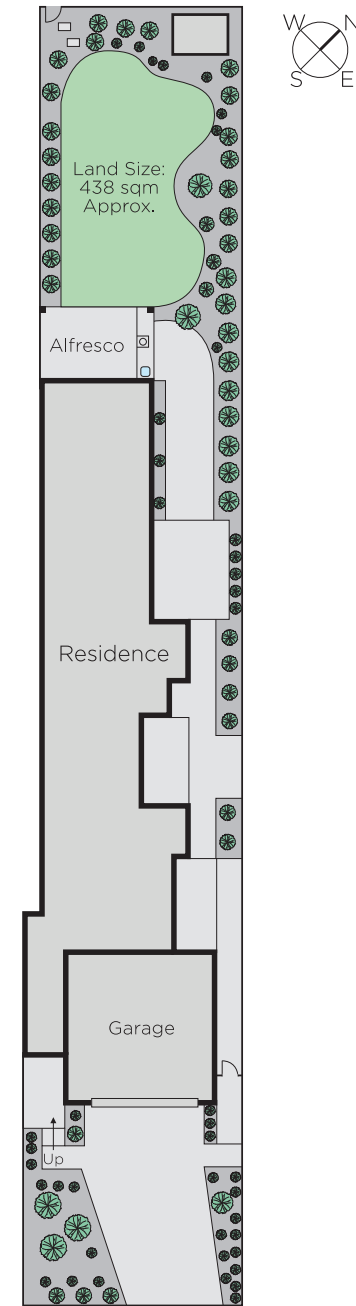
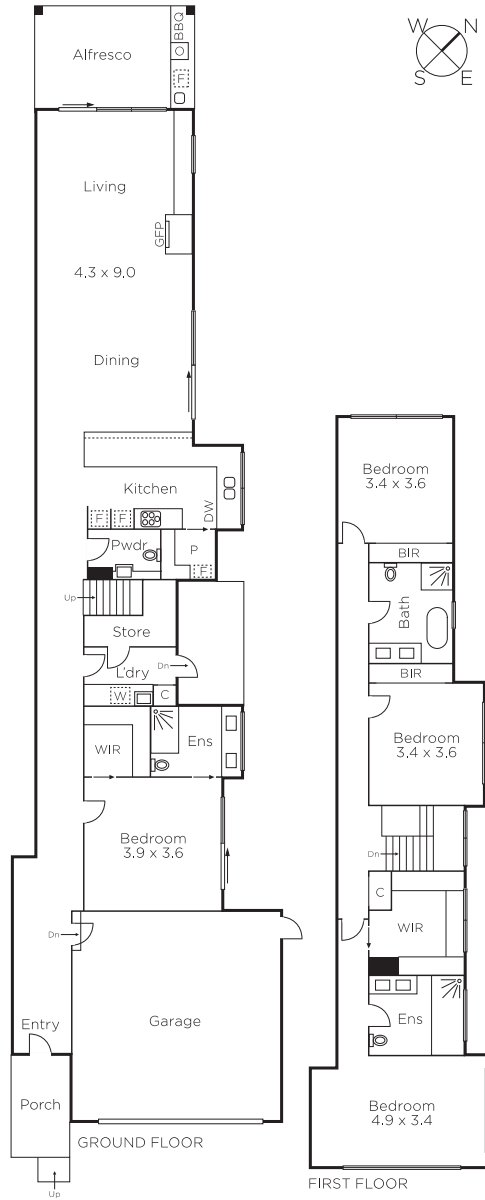
Justin Krongold 0403 163 355

Jason Brinkworth 0416 006 282

1111 High Street Armadale

marshallwhite.com.au


MARSHALLWHITE



Disclaimer: Information provided is believed to be accurate as at the date of printing, no responsibility is taken for any errors or omissions. It is your responsibility to obtain independent, professional advice. Personal information collected from you is for security purposes and to contact you should the property sell prior to auction. We may use this information to provide you with other real estate services including referrals to authorised financial services' providers. Visit our website at www.marshallwhite.com.au for our privacy policy.