



MARSHALLWHITE

1/405 Beach Road
Beaumaris



Superb Bay Views and Single-Level Excellence

Perched high on the cliffs above Ricketts Point in the iconic "The Point" complex, this waterfront two-bedroom apartment is extraordinary with uninterrupted views and single-level design. The position is first-class, looking out across the bay to the Mornington Peninsula from its generous lounge and dining rooms. Excellent design reveals a pristine Smeg and St George kitchen, two-way bathroom with separate shower room, powder room, two-car garage with workshop and storage space. Secure, gated, dual access from Lang Street and Point Avenue, prime position amid 4,787 sq metres approx of communal land.

1-405beachroad-beaumaris.com



Private Sale

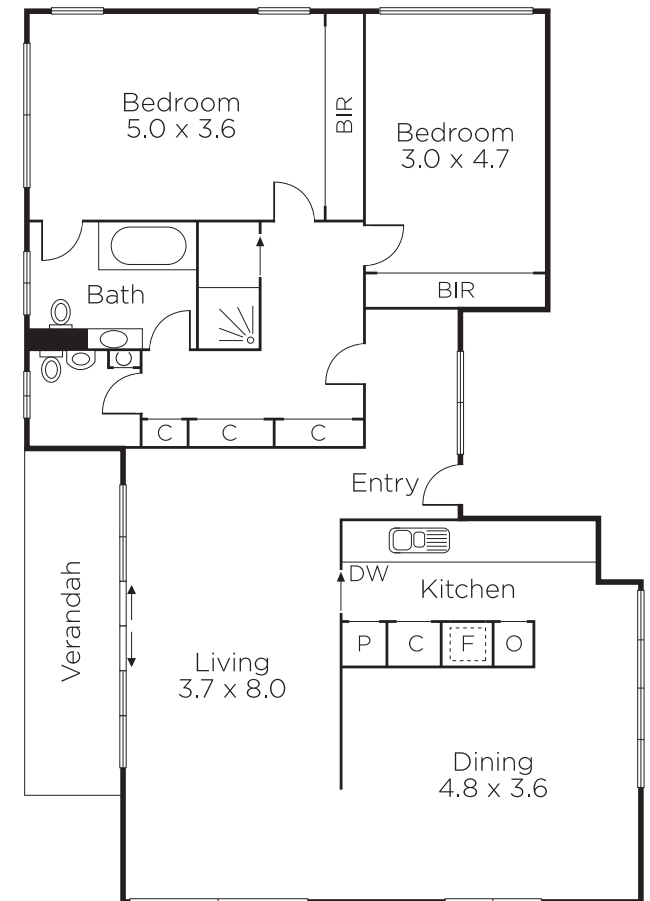
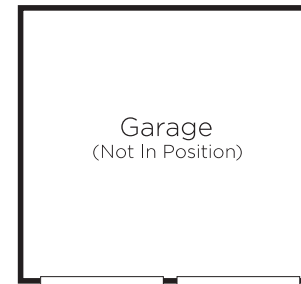
Barb Gregory
0419 568 370

Alyce Fleming
0499 082 614

Simone Tindall
0408 330 355


MARSHALLWHITE

225 Bay Street, Brighton



Disclaimer: Information provided is believed to be accurate as at the date of printing, no responsibility is taken for any errors or omissions. It is your responsibility to obtain independent, professional advice. Personal information collected from you is for security purposes and to contact you should the property sell prior to auction. We may use this information to provide you with other real estate services including referrals to authorised financial services providers. Visit our website at www.marshallwhite.com.au for our privacy policy.