



MARSHALLWHITE

14 Zetland Road
Mont Albert





A Gracious Edwardian Residence

Gracious Edwardian residence lies majestically in a generous garden allotment of 1,566sqm approx. with dual frontages and set privately behind a high front fence and hedge. The home showcases the preserved period attributes together with the impressive proportions typical of its era providing loads of zoned family accommodation and versatility. The home has recently undergone extensive restoration with the accommodation over 2-levels featuring polished timber floors, decorative ceilings and panelling with an arched hallway. Flowing to a fully-fitted study, formal sitting room, dining room and 5-bedrooms, downstairs main with WIR/ensuite, plus a further four upstairs with a family bathroom and study area. An expansive family domain with herringbone parquet floors plus an adjacent bathroom and laundry is serviced by a granite & S/S kitchen. All opening to a paved alfresco area in a tranquil garden setting overlooking a pool - delivering wonderful amenities for indoor/outdoor entertaining & relaxation. Other features include scope for additional updating, 3-zoned ducted heating, gas fire, ample storage & remote double garage/storage (Beatty Street access).

5  3  2 

Auction Saturday 20th October at 3.30pm

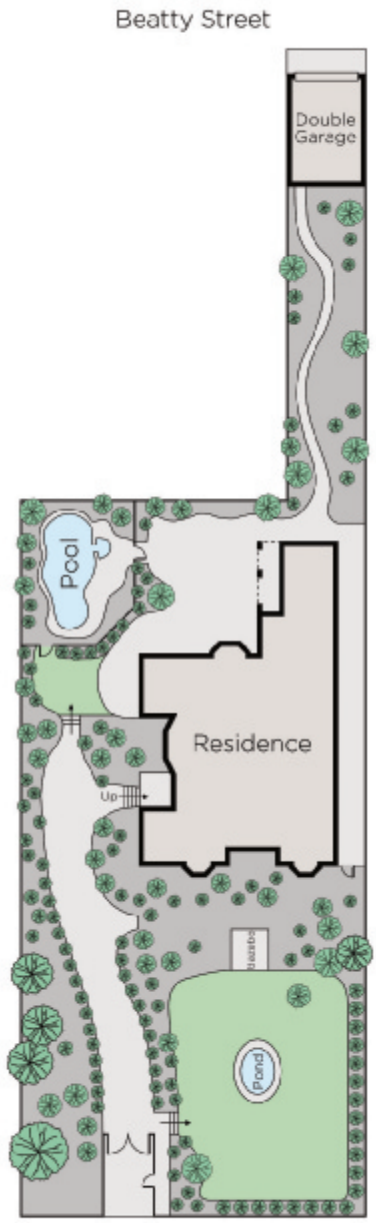
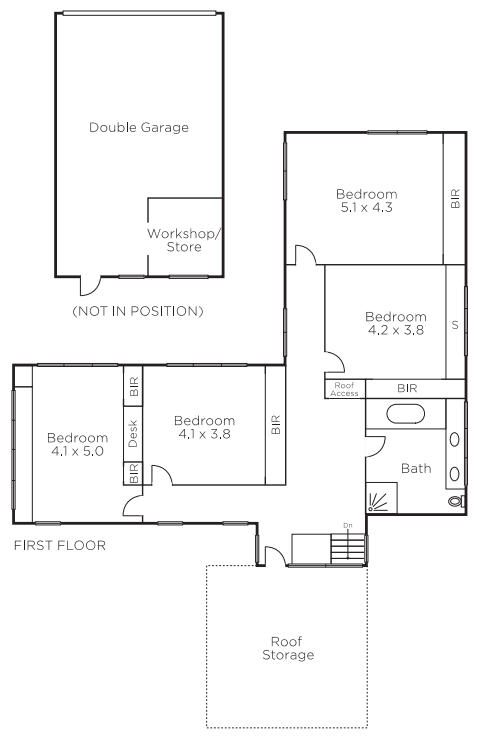
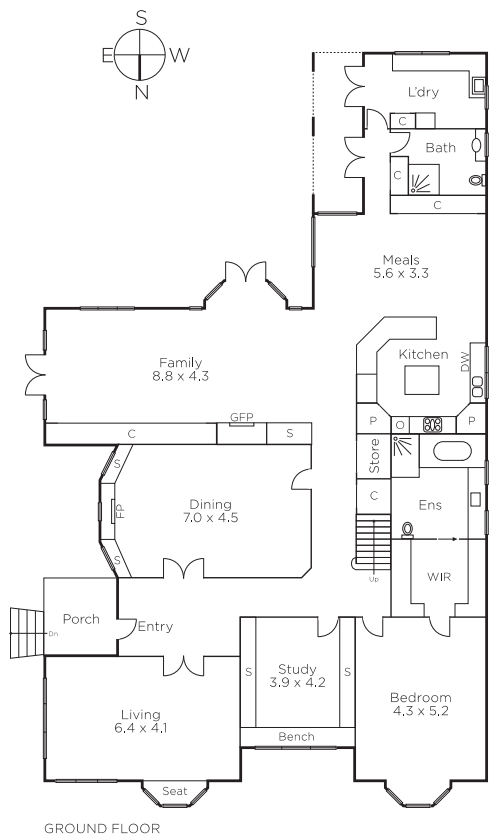
James Tostevin
0417 003 333

Charlie Tostevin
0431 713 205

Scarlett Hang
0405 054 888


MARSHALLWHITE

801 Glenferrie Road, Hawthorn



Disclaimer: Information provided is believed to be accurate as at the date of printing, no responsibility is taken for any errors or omissions. It is your responsibility to obtain independent, professional advice. Personal information collected from you is for security purposes and to contact you should the property sell prior to auction. We may use this information to provide you with other real estate services including referrals to authorised financial services' providers. Visit our website at www.marshallwhite.com.au for our privacy policy.