



MARSHALLWHITE

1/4 Wilgra Avenue
Ashburton





Every Luxury, Envable Location

Only just completed, this stunning brand new contemporary residence impressively showcases superb proportions, luxurious finishes and an intelligent floor-plan that responds impeccably to modern family lifestyles walking distance to Ashburton Village and station, schools, parks and the Aquatic Centre. Streaming with natural light inside, wide oak floors flow through the entrance hall to an expansive living and dining room with a state of the art European kitchen featuring stone benches and a butler's pantry. The living space opens to a private north-facing courtyard with deck for al fresco dining. The spacious main bedroom with lavish en-suite and walk in robe enjoys downstairs serenity while a sensational children's zone upstairs comprises a second gorgeous bedroom with chic en-suite and walk in robe, two additional double bedrooms with built in robes, a third stylish bathroom with freestanding bath and large retreat with study nook. Enjoying its own street frontage, it also includes video intercom, powder-room, laundry, ample storage and internally accessed double garage.

4  3  2 

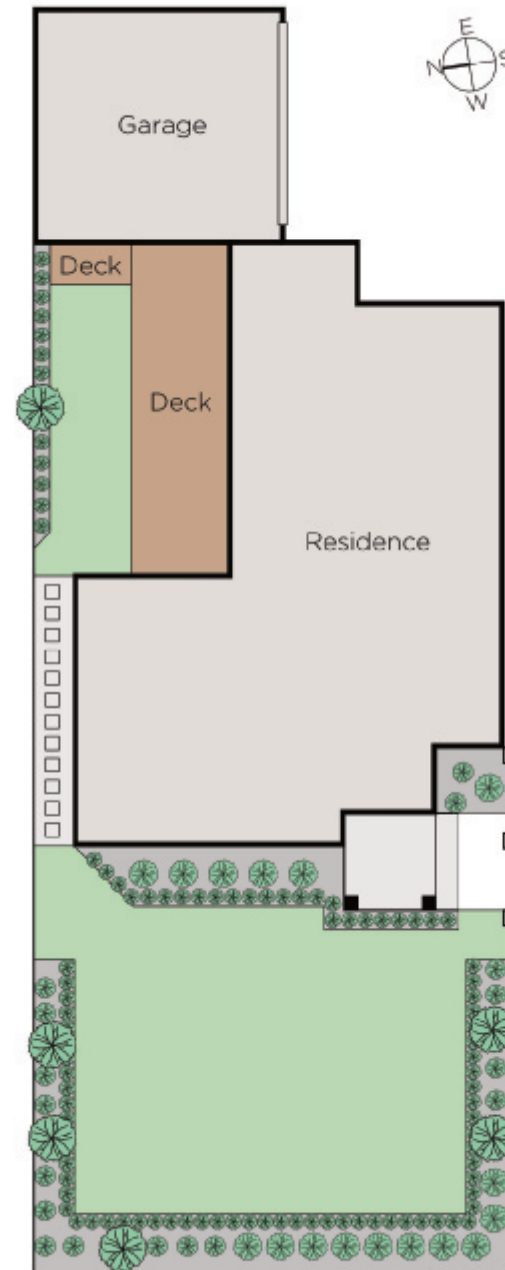
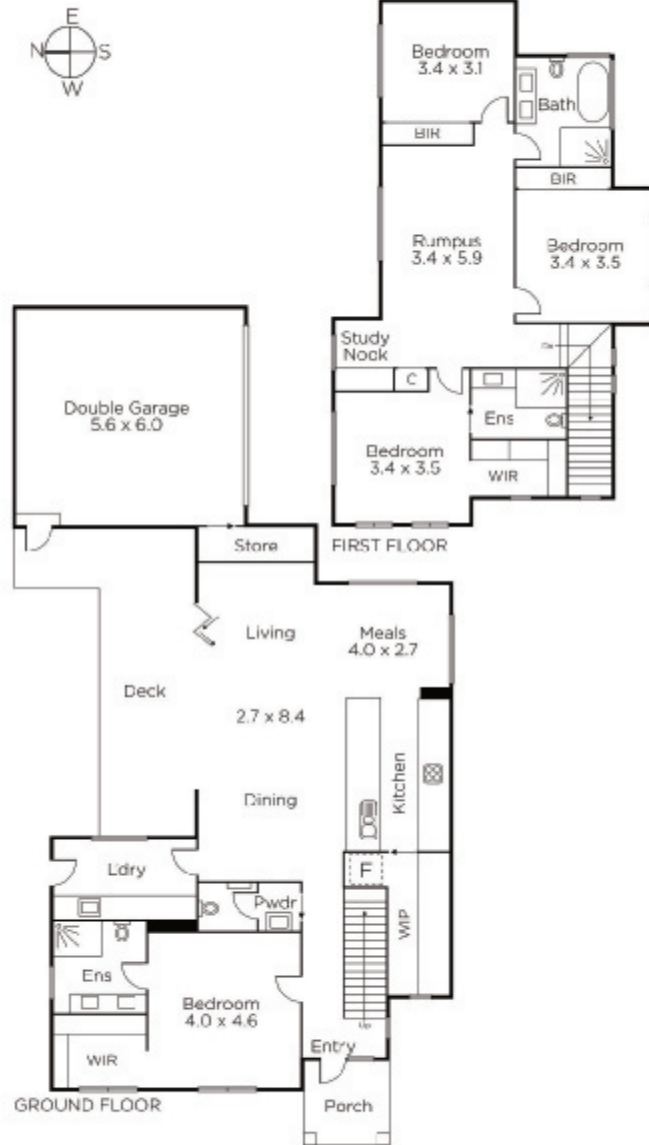
Auction Saturday 20th October at 11.30am

Todd Braggins
0424 552 238

Duane Wolowiec
0418 567 581


MARSHALLWHITE

801 Glenferrie Road, Hawthorn



Disclaimer: Information provided is believed to be accurate as at the date of printing, no responsibility is taken for any errors or omissions. It is your responsibility to obtain independent, professional advice. Personal information collected from you is for security purposes and to contact you should the property sell prior to auction. We may use this information to provide you with other real estate services including referrals to authorised financial services' providers. Visit our website at www.marshallwhite.com.au for our privacy policy.