




MARSHALLWHITE
ONE

1/4 Viola Crescent
Highett



Delightful, Al fresco Haven

Offering a most delightful indoor-outdoor connection, this bright and airy, three bedroom villa unit is a beautifully presented and peaceful haven that feels like a low maintenance house with first class lifestyle or investment credentials in a superb bayside position. Enriched by high ceilings, polished timber floors and concertina doors opening to the north, the open-plan kitchen/meals/living delivers a remarkable sense of spaciousness with premium stainless steel appliances. Also featuring robes in the bedrooms and a remote access lock-up garage with direct internal access to the main home, as well as a European laundry and reverse cycle air conditioning. Just around the corner from some terrific cafes, restaurants and shops on Highett Rd, as well as a city-bound trains, buses and only a few minutes from Southland Shopping Centre, this is a location you can fall in love with.

1-4violacrescent-highett.com

3 1 1

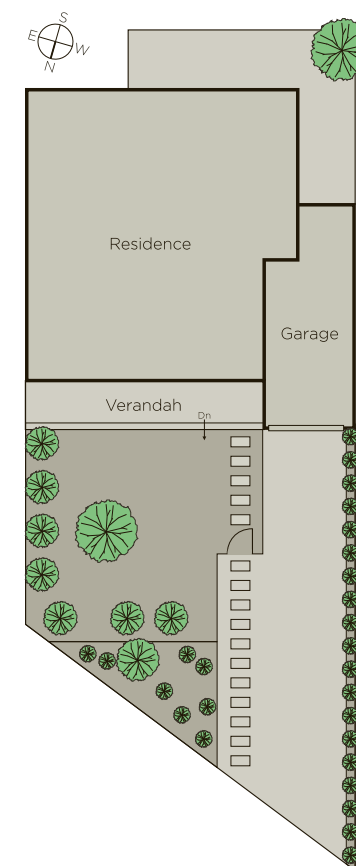
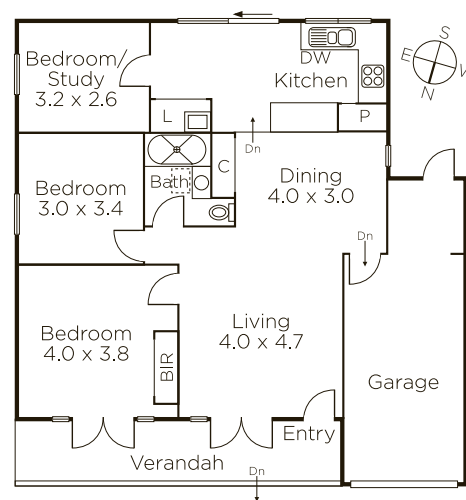
Auction Saturday 9th September at 10.30am

Holly Gillham 0423 564 688

Robin Parker 0409 336 282

225 Bay Street Brighton

9822 9999 mwone.com.au



MARSHALLWHITE
ONE

Disclaimer: Information provided is believed to be accurate as at the date of printing, no responsibility is taken for any errors or omissions. It is your responsibility to obtain independent, professional advice. Personal information collected from you is for security purposes to contact you should the property sell prior to auction. We may use this information to provide you with other real estate services including referrals to authorized financial services providers. Visit our website at www.mwone.com.au for our privacy policy.