



MARSHALLWHITE

14 Margarita Street
Hampton



Hampton Character and Corner Land

'Tiverton' has a high-set position on one of Hampton's coveted streets, lovingly retained character, and corner block of 670 square metres approx. The beautiful home is ready for a bright future close to many schools, a stroll to the beach and Hampton St's cafes, shops and trains. Single-level three-bedroom and study/playroom home has the spaciousness of two living areas, atrium dining zone, light-filled kitchen, and cherished period features. Easy-care garden, two-car garage accessed from St Kilian St, and a prime opportunity to extend this period home or build a larger designer home in this blue chip location STCA.

3 1 2

Auction Saturday 15th September at 11.30am

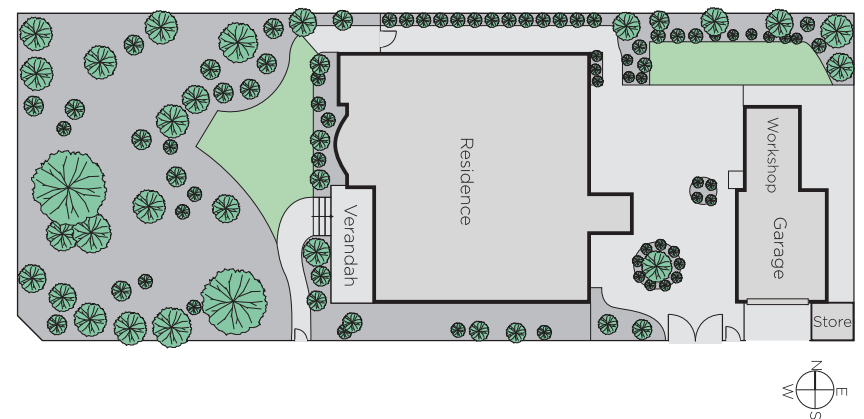
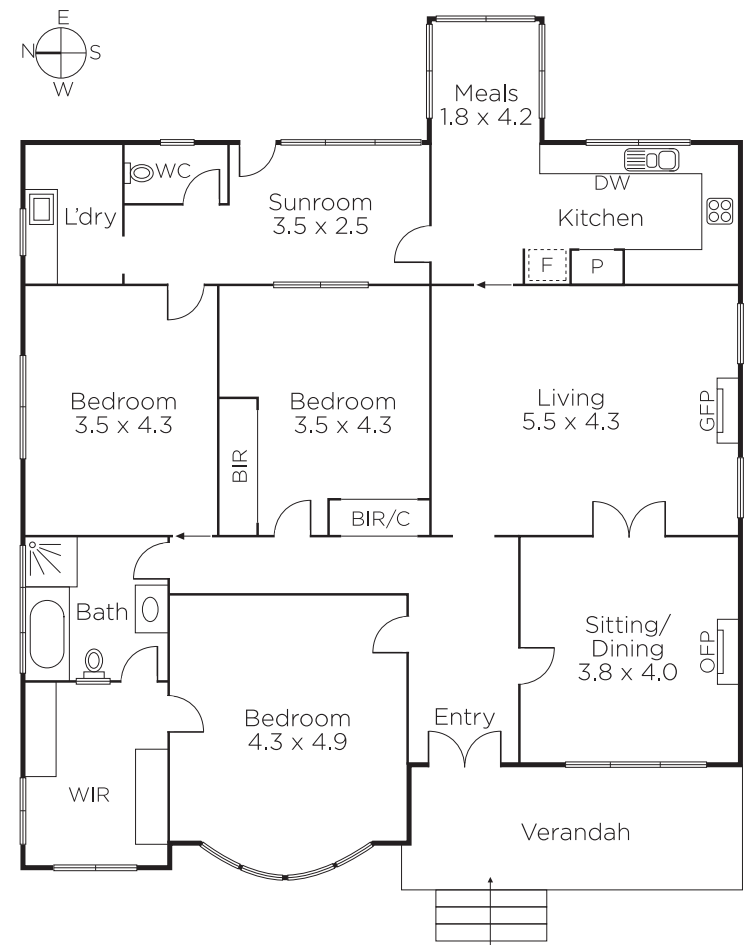
Robin Parker
0409 336 282

Kate Fowler
0418 418 385

Kylie Block
0439 755 588


MARSHALLWHITE

225 Bay Street, Brighton



Disclaimer: Information provided is believed to be accurate as at the date of printing, no responsibility is taken for any errors or omissions. It is your responsibility to obtain independent, professional advice. Personal information collected from you is for security purposes and to contact you should the property sell prior to auction. We may use this information to provide you with other real estate services including referrals to authorised financial services providers. Visit our website at www.marshallwhite.com.au for our privacy policy.