

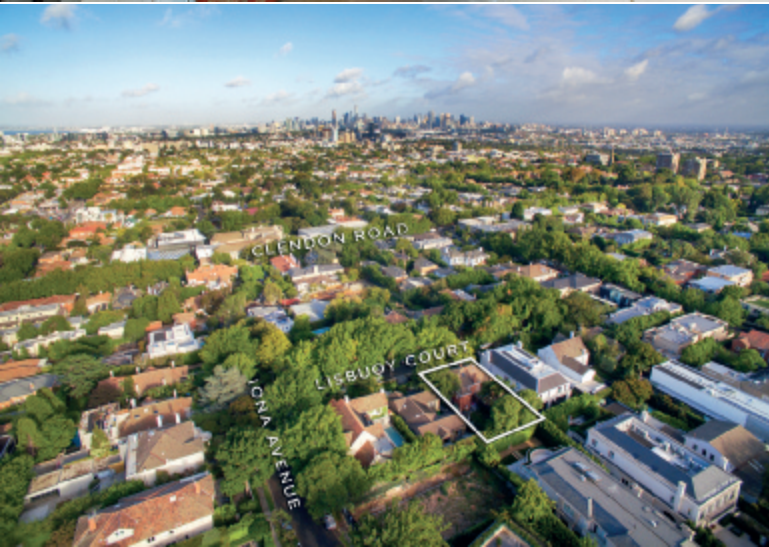


MARSHALLWHITE

14 Lisbuoy Court
Toorak



LISBUOY COURT



Timeless Elegance in an Elite Cul De Sac

Set on 604sqm (approx.) and superbly designed around a series of stunning private landscaped courtyards and a pool, this captivating single level residence, previously renovated by Wayne Gillespie, is enviably situated in an exclusive leafy cul de sac walking distance to Beatty Ave, Toorak station, Hawksburn Village, Orrong Park and schools. Exuding timeless elegance, the extra wide gallery hall introduces a glorious sitting room or 3rd bedroom opening to a sensational tranquil western sun-terrace, the beautiful main bedroom with marble en-suite and walk in robe, second double bedroom and marble bathroom. The exceptionally generous living and dining room with an open fireplace and well appointed stainless steel kitchen opens to a central north-facing courtyard with heated pool and the private east-facing garden surrounded by a hedge of Manchurian Pears. Offering idyllic single level living with scope to easily update, it also includes CCTV, audio wiring, alarm, laundry, irrigation and double garage.

14lisbuoycourt-toorak.com

3  2  2 

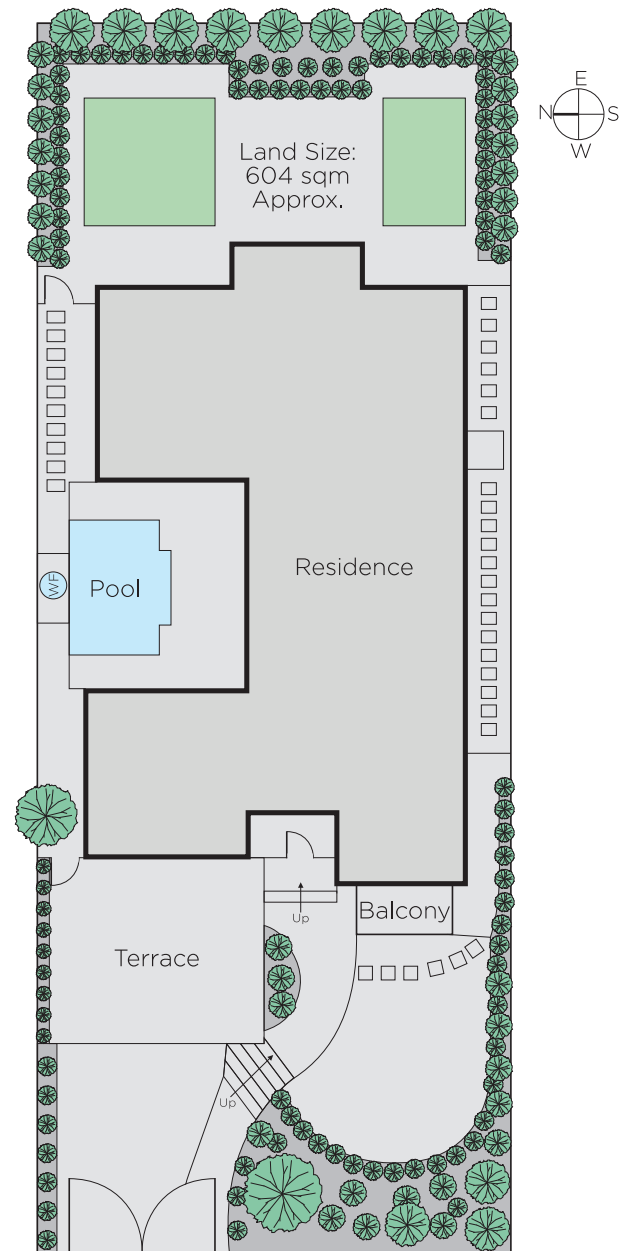
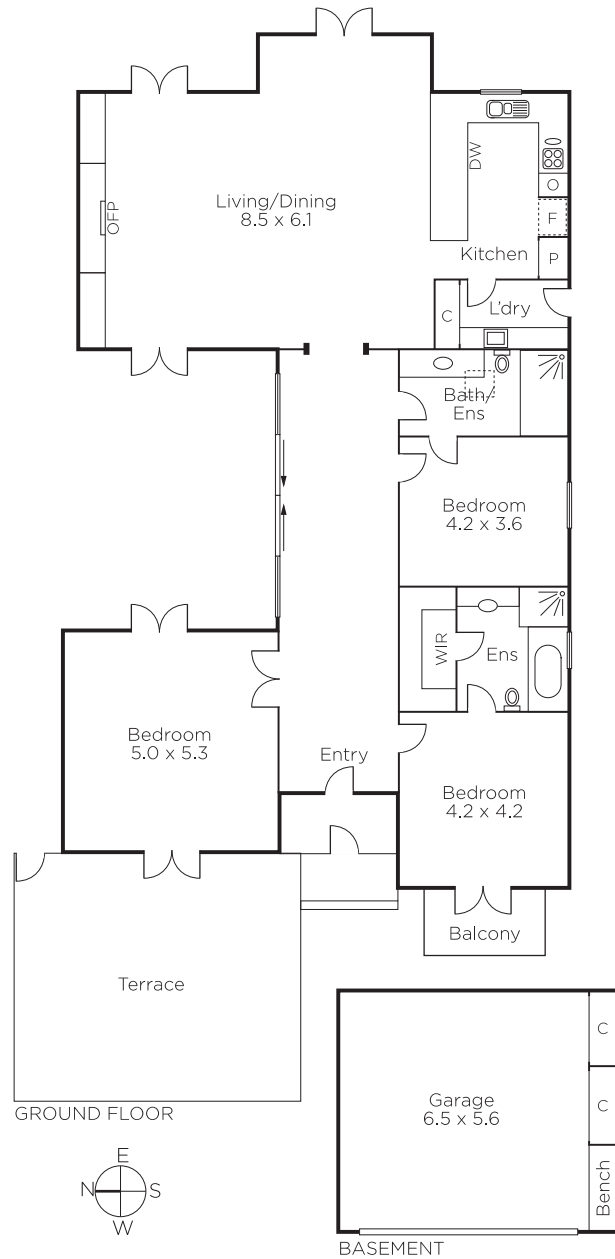
Auction Saturday 17th March at 1.30pm

Marcus Chiminello
0411 411 271

Nicole French
0417 571 505


MARSHALLWHITE

1111 High Street, Armadale



Disclaimer: Information provided is believed to be accurate as at the date of printing, no responsibility is taken for any errors or omissions. It is your responsibility to obtain independent, professional advice. Personal information collected from you is for security purposes and to contact you should the property sell prior to auction. We may use this information to provide you with other real estate services including referrals to authorised financial services' providers. Visit our website at www.marshallwhite.com.au for our privacy policy.