



  
MARSHALLWHITE

14 Haines Street  
Hawthorn



## When a Trendy and Convenient Lifestyle Counts

This superb Victorian cottage c1890 in the heart of Hawthorn has loads of appeal both inside and out. A light and bright interior with retained period features and contemporary styling comprises Baltic Pine fretwork arched hallway, two bedrooms (BIRs), a pristine bathroom and sleek kitchen with concealed laundry, CaesarStone benches, Euro S/S appliances overlooking a lower level living & dining area. Flowing through concertina doors to a deck with a sensor awning and private, leafy courtyard garden - providing an inviting area for relaxing or alfresco entertaining. Includes off street parking.

2 1 1

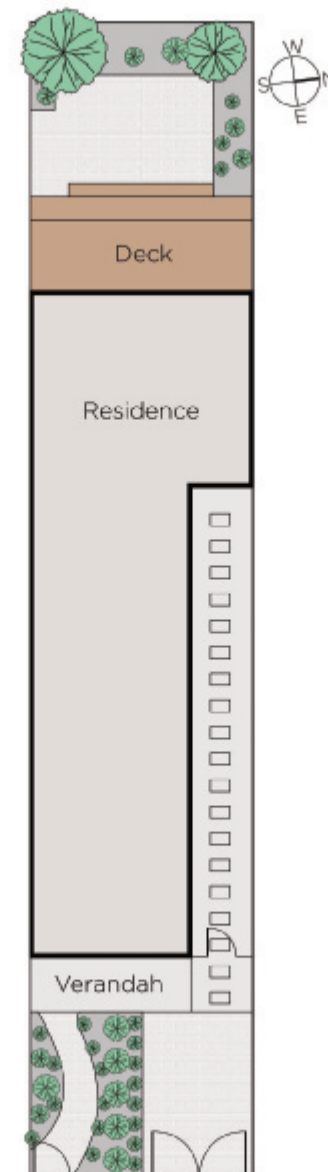
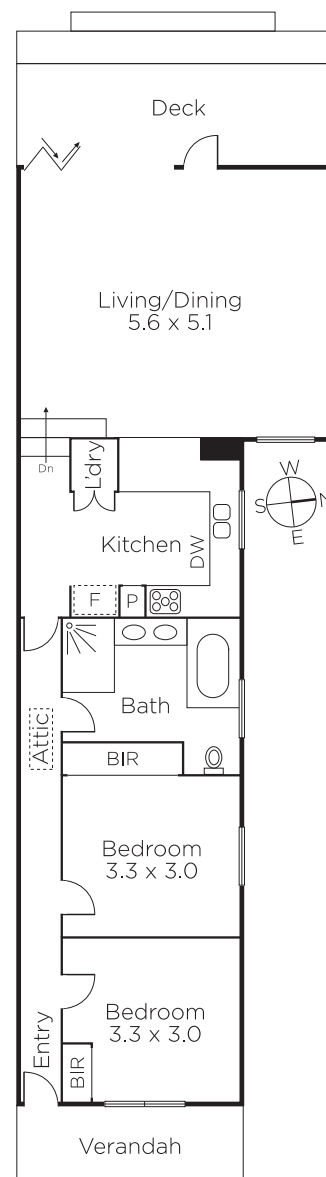
Auction Saturday 13th October at 10.30am

**Andrew Gibbons**  
0407 577 007

**Davide Lettieri**  
0414 018 707

  
**MARSHALLWHITE**

801 Glenferrie Road, Hawthorn



Disclaimer: Information provided is believed to be accurate as at the date of printing, no responsibility is taken for any errors or omissions. It is your responsibility to obtain independent, professional advice. Personal information collected from you is for security purposes and to contact you should the property sell prior to auction. We may use this information to provide you with other real estate services including referrals to authorised financial services providers. Visit our website at [www.marshallwhite.com.au](http://www.marshallwhite.com.au) for our privacy policy.