




MARSHALLWHITE

14 Fountaine Avenue
Malvern East





"Passchendaele"

Enjoying a leafy streetscape full of heritage charm, this enchanting period residence's exceptionally spacious and intelligently zoned dimensions deliver an appealing blend of period character and contemporary style close to East Malvern station, Terminus Village shops and trams, schools, Waverley Oval, freeway access and Chadstone Shopping Centre. High ceilings and Baltic pine floors are displayed in the wide central hall and inviting sitting room with a gas fireplace. The sublime gourmet European kitchen with stone benches and Ilve oven and an expansive, light-filled living and dining room fitted with a projector, screen and wood fire open through bi-fold doors to a private west-facing garden. The main bedroom with gas fireplace, chic en-suite and walk in robe, a second double bedroom with gas fireplace and stylish bathroom are downstairs away from an upstairs children's zone comprising two additional bedrooms with built in robes, a retreat and third bathroom. Perfect to enjoy immediately, it includes plantation shutters, audio wiring, laundry, garage and carport. Land size: 557sqm approx.

14fountainavenue-malverneast.com

4  3  2 

Auction Saturday 28th October at 10.30am

Daniel Wheeler 0411 676 058

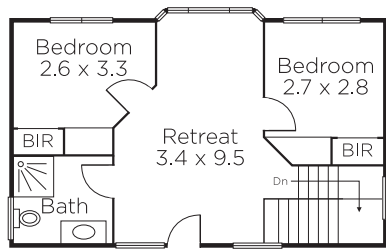
Clare Moloney 0401 546 441

Justin Krongold 0403 163 355

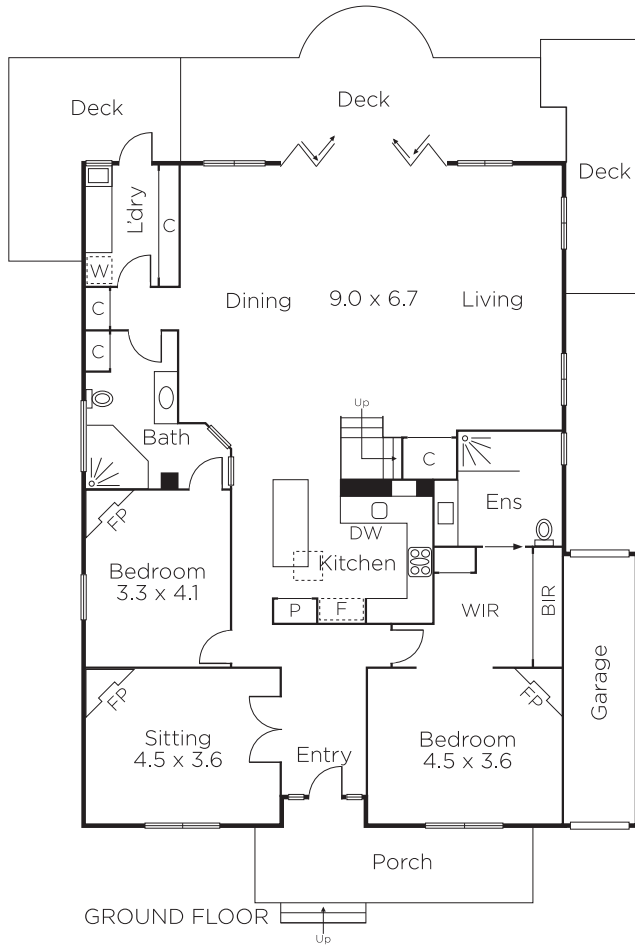
1111 High Street Armadale

marshallwhite.com.au


MARSHALLWHITE

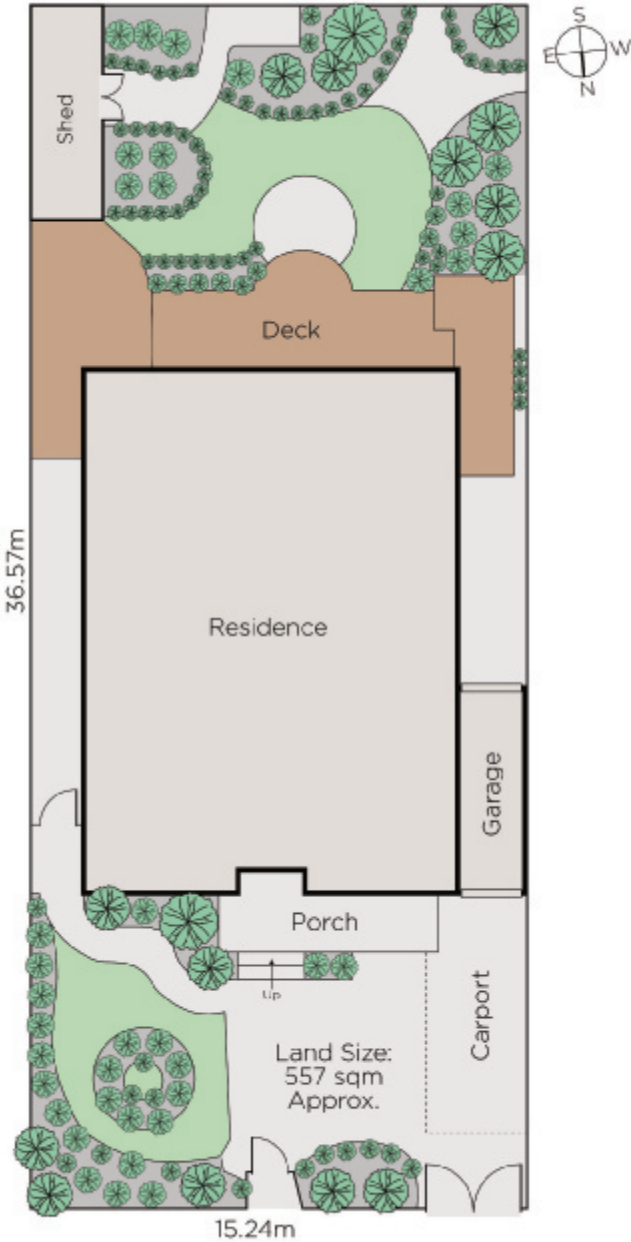


FIRST FLOOR



GROUND FLOOR

Up



Disclaimer: Information provided is believed to be accurate as at the date of printing, no responsibility is taken for any errors or omissions. It is your responsibility to obtain independent, professional advice. Personal information collected from you is for security purposes and to contact you should the property sell prior to auction. We may use this information to provide you with other real estate services including referrals to authorised financial services' providers. Visit our website at www.marshallwhite.com.au for our privacy policy.