




MARSHALLWHITE
ONE

13/7 College Parade
Kew



Lavish Art Deco Sophistication

Combining eye-catching older-style proportions with vogue Art Deco styling and vast communal gardens, this captivating and superbly renovated, three bedroom apartment is a home to be treasured. As it highlights a breakfast bar, striking black cabinetry and premium floor tiling, the kitchen/meals delivers a comfortable flow to an ambient lounge/dining that is warmed by an open fire place and timber floors, as it opens to a balcony with a delightful garden outlook. Meeting the demands of families, the home's bedrooms each feature mirrored built-in robes, whilst the bathroom/laundry is especially vogue and rear parking is an added bonus. All the vibrancy of Glenferrie Rd's famous strip of shops, cafes and restaurants is comfortably walkable from this central location that is also just moments from a number of tram routes, from Kew Junction and a multitude of outstanding schools.

13-7collegeparade-kew.com

3 1 1

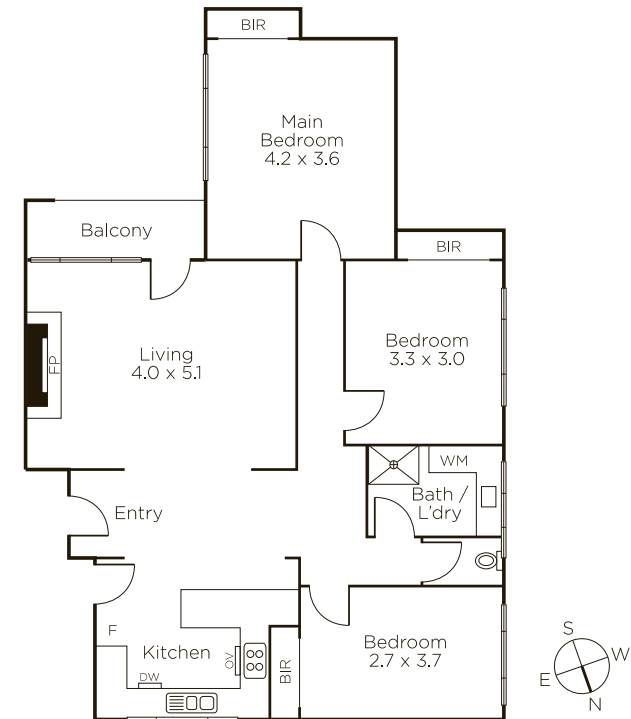
Auction Saturday 7th September at 10am

Ash Sachdev 0402 425 661

James Hill 0402 421 154

801 Glenferrie Road Hawthorn

9822 9999 mwone.com.au



MARSHALLWHITE
ONE

Disclaimer: Information provided is believed to be accurate as at the date of printing, no responsibility is taken for any errors or omissions. It is your responsibility to obtain independent, professional advice. Personal information collected from you is for security purposes to contact you should the property sell prior to auction. We may use this information to provide you with other real estate services including referrals to authorized financial services providers. Visit our website at www.mwone.com.au for our privacy policy.