




MARSHALLWHITE
ONE

1/36 The Avenue
Balaclava



A Leafy Sanctuary on The Avenue

Differentiated by its huge private courtyard and positioned perfectly to revel in all the cosmopolitan delights of Carlisle St and the inner-South East, this beautifully renovated, two bedroom, ground floor apartment is a terrific entry or investment in this thriving urban location. Instantly impressive, the home's hub is the open-plan kitchen/meals/living with stone benches, premium stainless steel appliances and an enticing flow out to the courtyard oasis, whilst the fully-tiled bathroom is an impressive designer domain. Highly functional, as well as visually appealing, the home has mirrored robes in each bedroom, a European laundry, secure video entry, undercover parking, storage and reverse cycle air conditioning. From this peaceful position, you are ideally situated to enjoy one of Melbourne's premier strips of shops, cafes, bars and restaurants, then retreat to your home sanctuary as needed.

1-36theavenue-stkildaeast.com



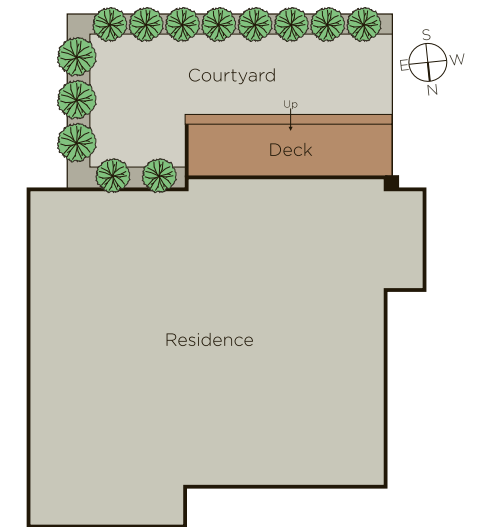
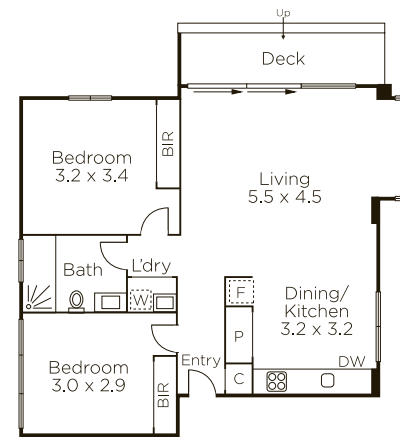
Auction Saturday 15th July at 10.30am

Joseph Ben-Danan 0408 135 948

Bradley Steinbach 0403 539 038

1111 High Street Armadale

9822 9999 mwone.com.au



MARSHALLWHITE
ONE

Disclaimer: Information provided is believed to be accurate as at the date of printing, no responsibility is taken for any errors or omissions. It is your responsibility to obtain independent, professional advice. Personal information collected from you is for security purposes to contact you should the property sell prior to auction. We may use this information to provide you with other real estate services including referrals to authorized financial services providers. Visit our website at www.mwone.com.au for our privacy policy.