




MARSHALLWHITE

1/36 Daniell Place
Kew



Position Perfect - Presentation Perfect

Quietly situated in a leafy mews-style complex with lovely gardens - this immaculately presented, stylishly renovated single-level townhouse is tucked away in the highly regarded Sackville Ward. Enhanced by a street frontage with a generous private front garden & courtyard including two decks provides perfect options for outdoor entertaining. The spacious light-filled interior features polished timber flooring, N/W facing living and dining room, granite kitchen with S/S appliances, laundry/bathroom & powder room; plus the flexibility of 3-bedrooms or 2 + study, main with ensuite. Land size: 305sqm approx.

1-36daniellplace-kew.com



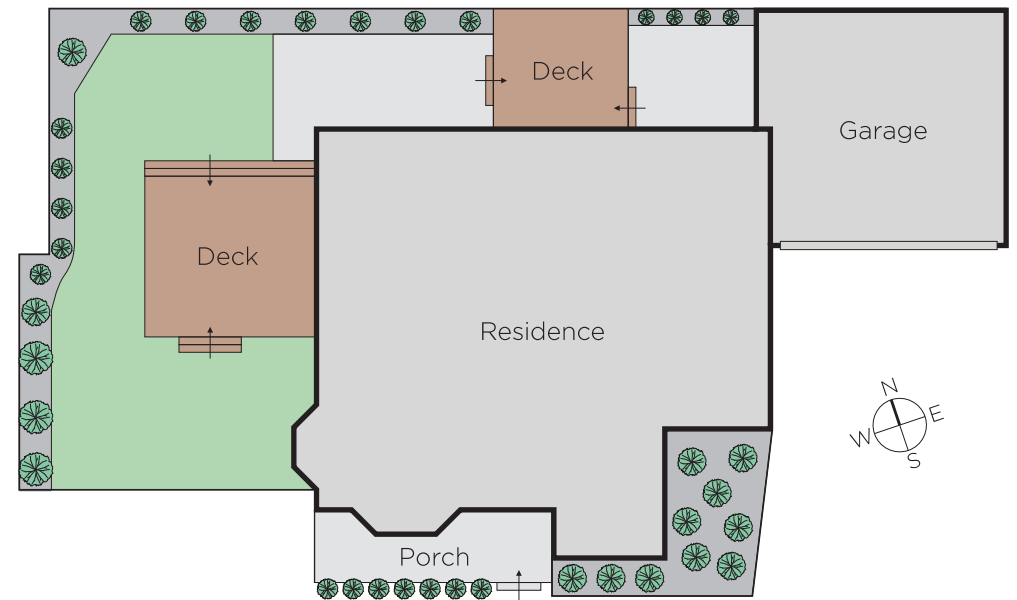
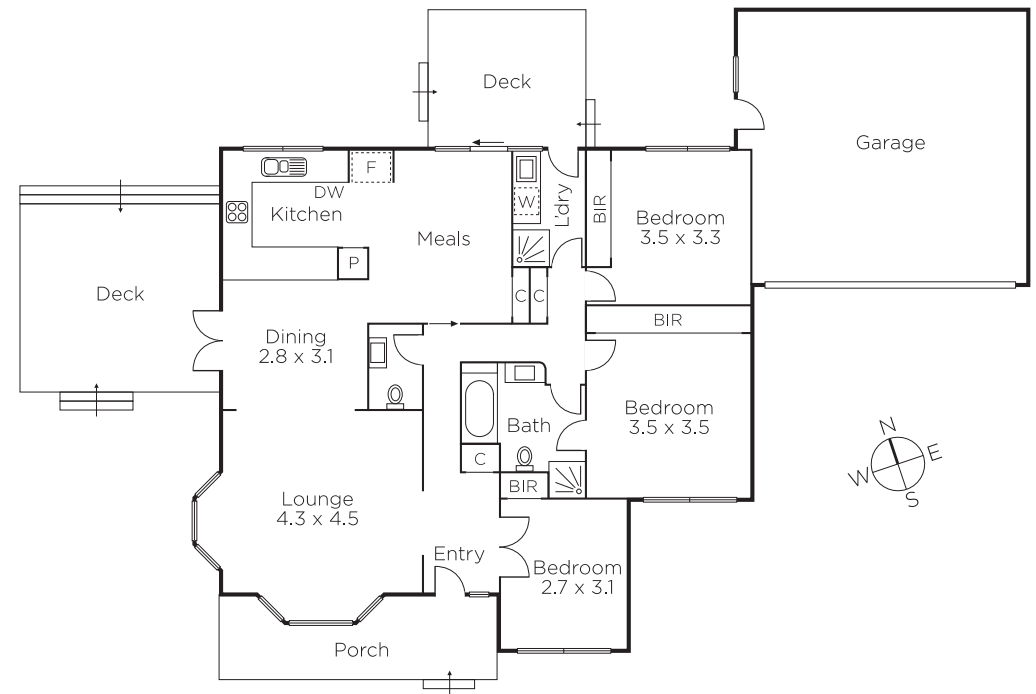
Auction Saturday 17th February at 10.30am

Michael Wood
0425 280 191

Tori McGregor
0400 633 992


MARSHALLWHITE

801 Glenferrie Road, Hawthorn



Disclaimer: Information provided is believed to be accurate as at the date of printing, no responsibility is taken for any errors or omissions. It is your responsibility to obtain independent, professional advice. Personal information collected from you is for security purposes and to contact you should the property sell prior to auction. We may use this information to provide you with other real estate services including referrals to authorised financial services? providers. Visit our website at www.marshallwhite.com.au for our privacy policy.