



35



MARSHALLWHITE  
ONE

1/35 Wattletree Road  
Armadale





## Vast and Sophisticated Urban Attitude

Large and sophisticated, this as new two bedroom apartment retains wonderful privacy whilst enjoying a broad entertainers' balcony and lush garden backdrop. A home that instantly engages with its vast open-plan living as it flows enticingly through floor-to-ceiling glass sliding doors to a huge and private balcony and beautiful garden, it is also incredibly functional with fully-integrated Miele appliances that include a convection cooktop, plus a huge pantry and stainless steel benches. Large robes in the bedrooms and an ensuite in the master are terrific indulgences in this home with secure basement parking, intercom entry, a storage cage, central heating and cooling. Positioned to combine a terrific local café culture with ridiculously easy city access, you will reap the rewards of having Armadale Train Station and city-bound trams all within walking distance, plus you have Malvern Central Shopping Centre within easy reach as well.

1-35wattletreeroad-armadale.com

2 2 1

Auction Saturday 8th September at 9.30am

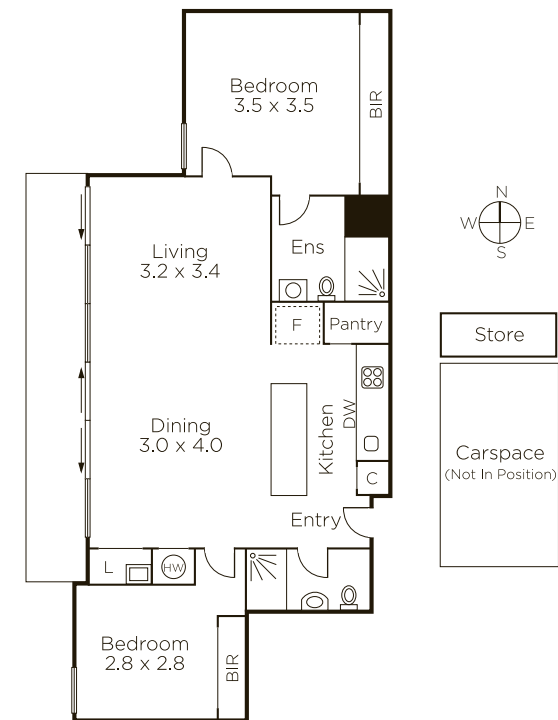
Joseph Ben-Danan 0408 135 948

Jack Nicol 0400 774 428

David Volpato 0414 701 983

1111 High Street Armadale

9822 9999 mwone.com.au



MARSHALLWHITE  
ONE

Disclaimer: Information provided is believed to be accurate as at the date of printing, no responsibility is taken for any errors or omissions. It is your responsibility to obtain independent, professional advice. Personal information collected from you is for security purposes to contact you should the property sell prior to auction. We may use this information to provide you with other real estate services including referrals to authorized financial services' providers. Visit our website at [www.mwone.com.au](http://www.mwone.com.au) for our privacy policy.