



MARSHALLWHITE

1340 High Street
Malvern



Edwardian Elegance, Envable Location

Directly opposite Malvern Gardens, this solid brick c1905 Edwardian residence's unexpectedly spacious & beautifully presented single level dimensions deliver immeasurable lifestyle appeal near the restaurant & retail precincts on High St & Glenferrie Rd, schools & trams. An arched hall introduces two double bedrooms, bathroom with spa bath & generous sitting room. An expansive living/dining room with a gourmet kitchen opens to the deep private garden. Includes hydronic heating, alarm, video intercom, 2nd shower & toilet, laundry, irrigation, water tank, off street parking for 3 & auto gates. Land size: 391sqm (approx.)

2 2 2

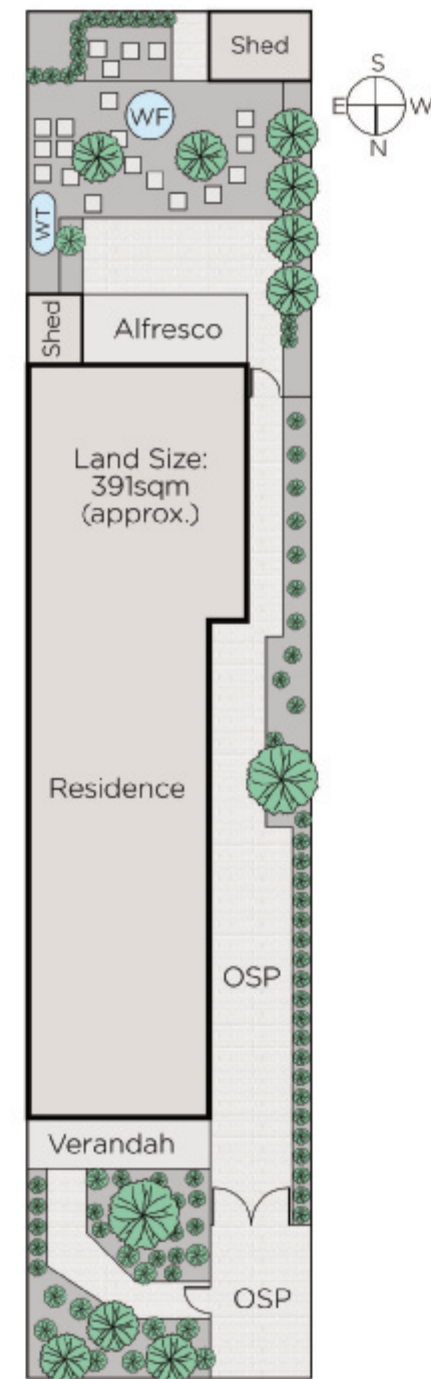
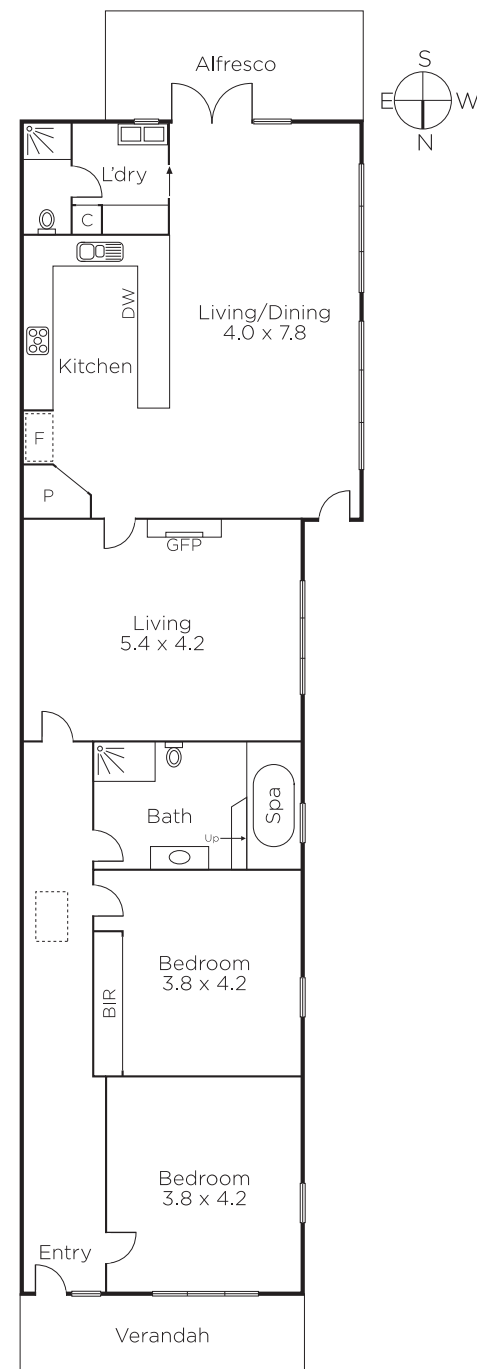
Auction Saturday 20th October at 1.30pm

James Redfern
0412 360 667

David Volpato
0414 701 983


MARSHALLWHITE

1111 High Street, Armadale



Disclaimer: Information provided is believed to be accurate as at the date of printing, no responsibility is taken for any errors or omissions. It is your responsibility to obtain independent, professional advice. Personal information collected from you is for security purposes and to contact you should the property sell prior to auction. We may use this information to provide you with other real estate services including referrals to authorised financial services providers. Visit our website at www.marshallwhite.com.au for our privacy policy.