




MARSHALLWHITE
ONE

13/352 Auburn Road
Hawthorn



Spacious & North-facing Leafy Garden Retreat

Ideally positioned to provide both lifestyle and investment returns, this north facing first/top floor apartment enjoys a quiet, set back position in a 1960's block near Riversdale Village cafes and trams. The generous proportions, individual charm and thoughtful design so often admired in vintage domains ensures the immediate comfort of its two bedroom spaces whilst also providing scope to add your own stamp either immediately or in years to come. Designed to impress, a broad wall of glass allows elegant living/dining spaces to bask in northern sunshine and leafy outlooks whilst a tranquil balcony offers alfresco enjoyment above the lush gardens. A bright kitchen and large bathroom complement two bedrooms with robes, the main an inviting queen size with garden views. Herringbone parquet floors add a touch of glamour to a simply delightful environment with gas heating included. Located in the prized Auburn South Primary School zone.

13-352auburnroad-hawthorn.com

2 1

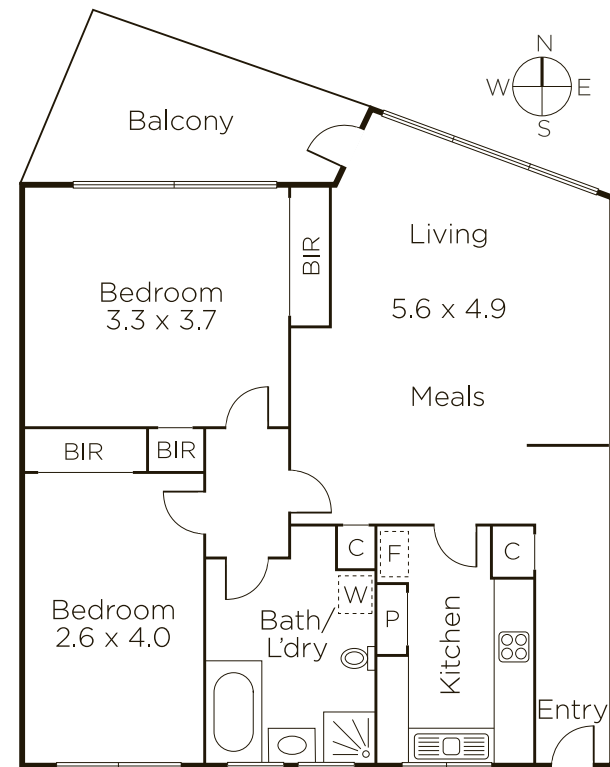
Auction Saturday 23rd June at 11.30am

James Hill 0402 421 154

Bethany Wilkinson 0449 285 813

801 Glenferrie Road Hawthorn

9822 9999 mwone.com.au



MARSHALLWHITE
ONE

Disclaimer: Information provided is believed to be accurate as at the date of printing, no responsibility is taken for any errors or omissions. It is your responsibility to obtain independent, professional advice. Personal information collected from you is for security purposes to contact you should the property sell prior to auction. We may use this information to provide you with other real estate services including referrals to authorized financial services providers. Visit our website at www.mwone.com.au for our privacy policy.