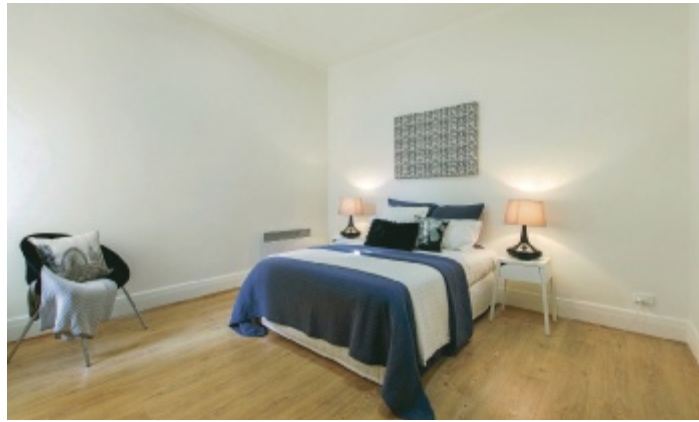





MARSHALLWHITE
ONE

1/321 High Street
Kew



Impressive and Enormous AI fresco Hideaway

Impressive in every regard, this luxuriously appointed and bespoke home is arguably the largest one bedroom apartment in Melbourne. Offering the surreal sense of seclusion amidst all the action, the home not only features two beautiful living rooms, but also boasts a huge, north-facing entertainer's deck that is bathed in glorious sunshine. A striking Caesar Stone kitchen is equipped with premium tile splash backs and soft close cabinetry as it presents a streamlined and light-filled living zone that is distinct from the formal lounge room, but conveniently connected to the impressive deck. Importantly, the home is accessed via a concealed and secure intercom entry and is enhanced by reverse cycle air conditioning. The perfect low maintenance lifestyle hub, positioned in the midst of Kew Junction's marvelous cafes, restaurants, bars and strip shopping, you can also enjoy easy city access by public transport right on your doorstep.

1-321highstreet-kew.com

1 1 1

Auction Saturday 3rd June at 2pm

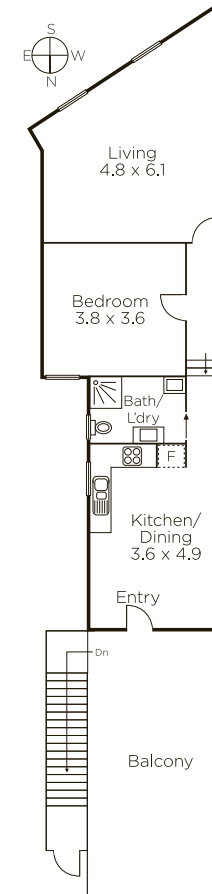
Luke Saville 0437 720 806

Davide Lettieri 0414 018 707

801 Glenferrie Road Hawthorn

9822 9999 mwone.com.au


MARSHALLWHITE
ONE



Disclaimer: Information provided is believed to be accurate as at the date of printing, no responsibility is taken for any errors or omissions. It is your responsibility to obtain independent, professional advice. Personal information collected from you is for security purposes to contact you should the property sell prior to auction. We may use this information to provide you with other real estate services including referrals to authorized financial services' providers. Visit our website at www.mwone.com.au for our privacy policy.