




MARSHALLWHITE

1/32 Clifton Road
Hawthorn East





Ultra-Convenient Light Filled, Spacious Living

Privately positioned behind a high fence and pretty front garden, this contemporary brick townhouse, front one of only two delivers light and spacious low maintenance living on a single level. Ideal for families, professionals or retirees scaling down to enjoy the benefits of its excellent location and a low maintenance, attractive garden with scope for outdoor relaxation and entertaining.

The recently refurbished interior is highlighted by vaulted ceilings, sky windows, central light well/courtyard and large windows delivering abundant light and a spacious ambience. With the accommodation featuring an entrance foyer flowing to a generous formal sitting and dining room combined with OFP, three zoned bedrooms, main with a walk-in robe and ensuite, family bathroom with separate laundry. Through to a bright informal living & meals area plus a well-equipped granite kitchen with quality appliances - overlooking a terrace and paved rear garden. Other features include ducted heating, R/C air conditioner (informal living), ample storage, watering system, remote double garage/storage with turning area.

1-32cliftonroad-hawthorneast.com

3  2  2 

Auction Saturday 17th March at 12.30pm

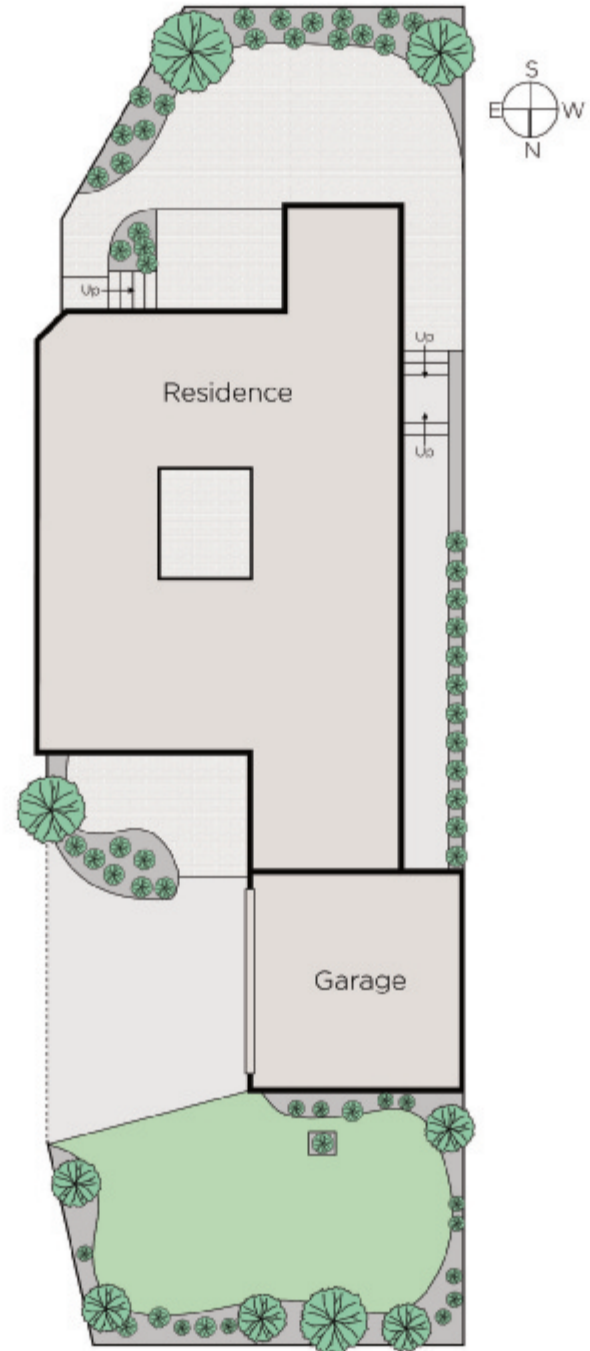
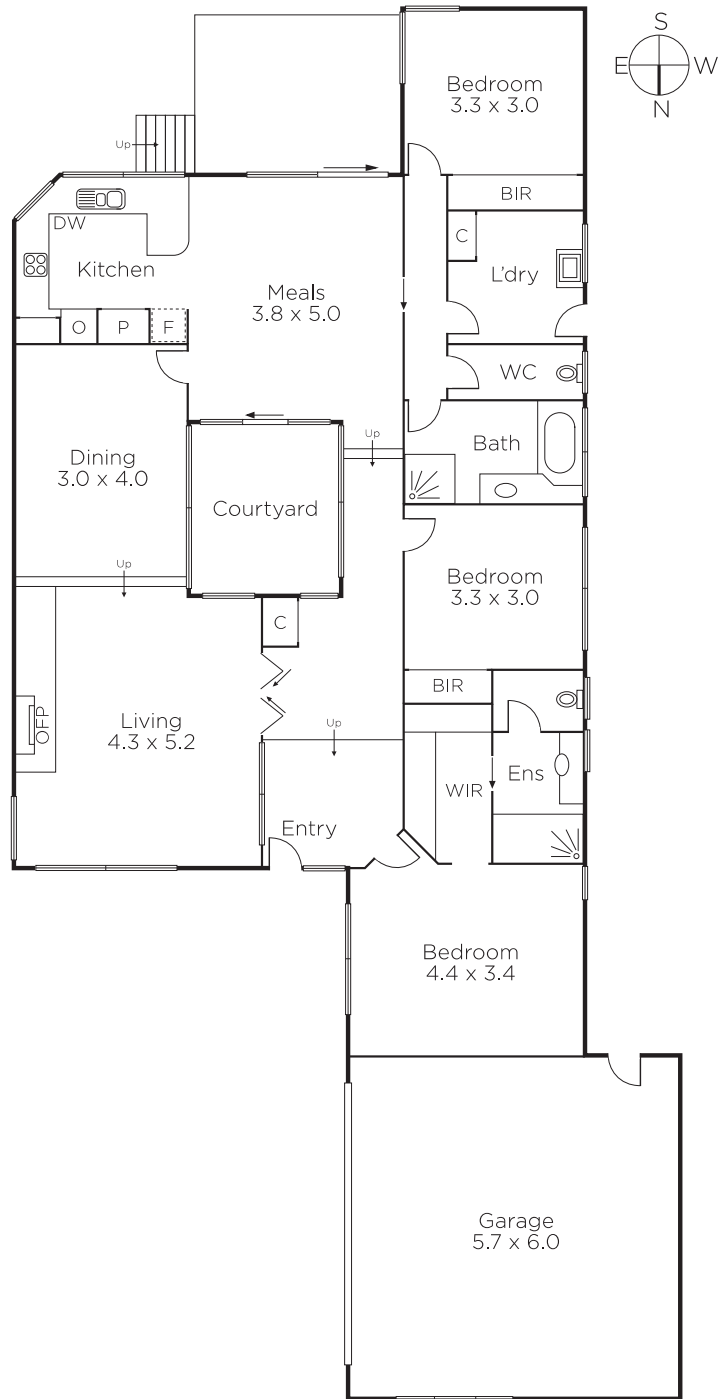
Mark Sutherland
0418 691 585

Nick Ptak
0413 370 442

Mike Beardsley
0476 777 004


MARSHALLWHITE

801 Glenferrie Road, Hawthorn



Disclaimer: Information provided is believed to be accurate as at the date of printing, no responsibility is taken for any errors or omissions. It is your responsibility to obtain independent, professional advice. Personal information collected from you is for security purposes and to contact you should the property sell prior to auction. We may use this information to provide you with other real estate services including referrals to authorised financial services' providers. Visit our website at www.marshallwhite.com.au for our privacy policy.