



130

  
MARSHALLWHITE

130 Bridge Street  
Port Melbourne





## North-facing Victorian with Scope to Improve

Rare opportunity to secure a brick Victorian terrace with northern orientation and ROW access in comfortable order throughout yet offering potential to renovate or extend (STCA). Perfectly positioned just moments to Bay Street, public transport and the beach, this captivating home represents a wonderful lifestyle opportunity. Featuring high ceilings, two spacious bedrooms, open plan and updated kitchen with adjacent living and dining area overlooking garden courtyard. Central modern bathroom, laundry space. Rear storage shed. Reverse cycle heating/cooling and Nobo heating. This home is ready to move straight into and enjoy or look to the future to enhance.

[130bridgestreet-portmelbourne.com](http://130bridgestreet-portmelbourne.com)

2  1 

Auction Saturday 27th May at 2.30pm

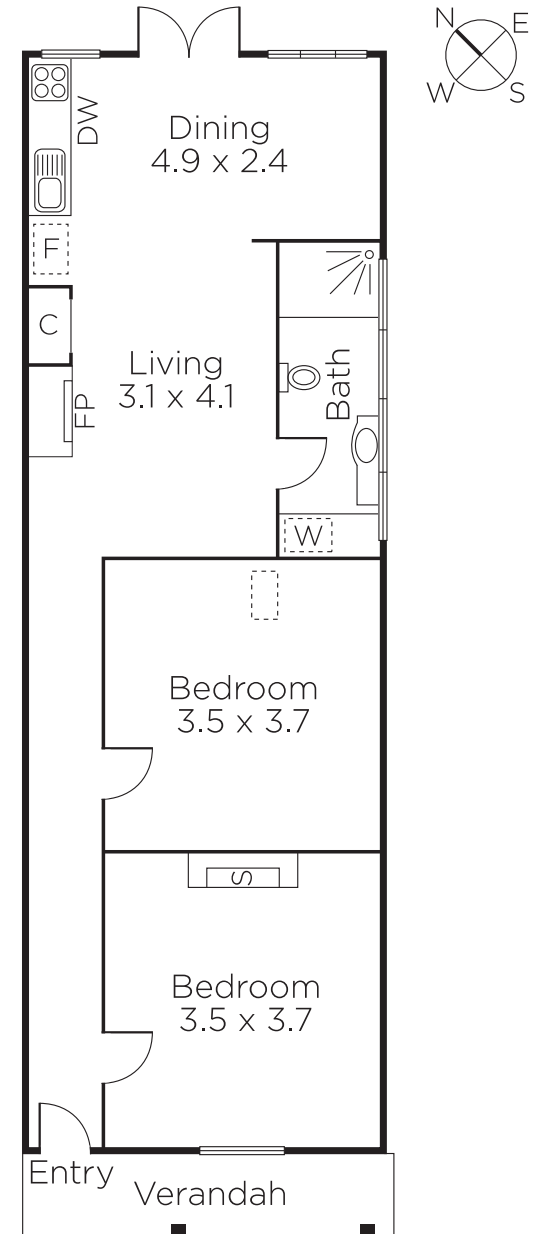
Oliver Bruce 0409 856 599

Nicholas Hoo 0435 728 272

Sarah Wood 0408 902 827

101 Dundas Place Albert Park  
[marshallwhite.com.au](http://marshallwhite.com.au)

  
MARSHALLWHITE



Disclaimer: Information provided is believed to be accurate as at the date of printing, no responsibility is taken for any errors or omissions. It is your responsibility to obtain independent, professional advice. Personal information collected from you is for security purposes and to contact you should the property sell prior to auction. We may use this information to provide you with other real estate services including referrals to authorised financial services' providers. Visit our website at [www.marshallwhite.com.au](http://www.marshallwhite.com.au) for our privacy policy.