



  
MARSHALLWHITE

13 St Johns Ave  
Mont Albert





## The School House

A former Ormiston school house, this stylishly refurbished residence provides a light-filled contemporary family environment near Hamilton St Village, Mont Albert station, Surrey Park and schools. Bathed in northern light, the generous living/dining room and modern stone kitchen opens to the private north garden. A spacious sitting room/4th bedroom overlooks the garden while upstairs a large retreat is surrounded by the main bedroom with en-suite and walk in robe, two additional bedrooms (robes) and stylish bathroom. On a substantial 520sqm approx. allotment, it also offers potential as a new home site (STCA).

13stjohnsavenue-montalbert.com

4 2 2

Auction Saturday 19th August at 11.30am

Shamit Verma 0401 137 597

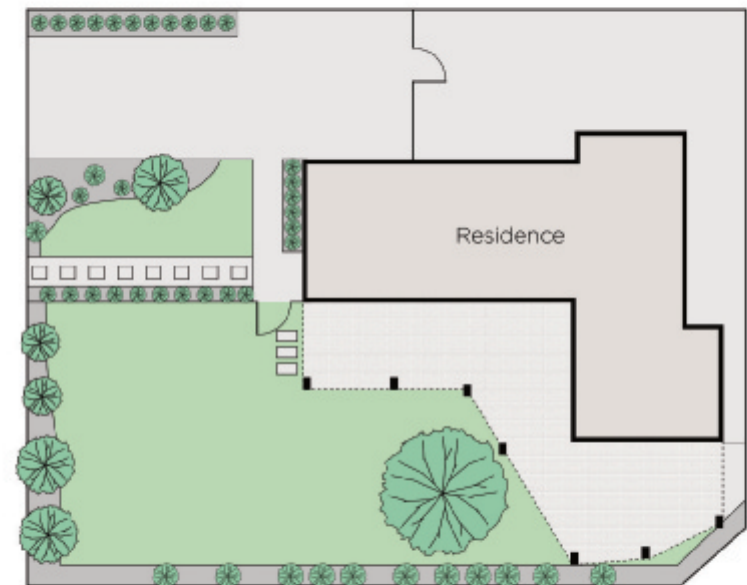
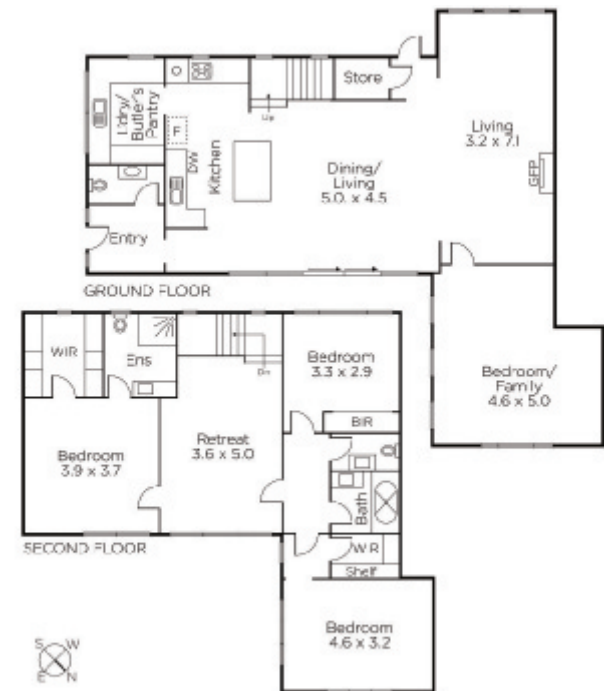
Ross Stryker 0401 318 772

Ash Howarth 0415 756 764

801 Glenferrie Road Hawthorn

marshallwhite.com.au

  
MARSHALLWHITE



Disclaimer: Information provided is believed to be accurate as at the date of printing, no responsibility is taken for any errors or omissions. It is your responsibility to obtain independent, professional advice. Personal information collected from you is for security purposes and to contact you should the property sell prior to auction. We may use this information to provide you with other real estate services including referrals to authorised financial services' providers. Visit our website at [www.marshallwhite.com.au](http://www.marshallwhite.com.au) for our privacy policy.